




VIVREAU®
ADVANCED WATER SYSTEMS

V3-203A-1

December 2016

HIGH VOLUME BOTTLER

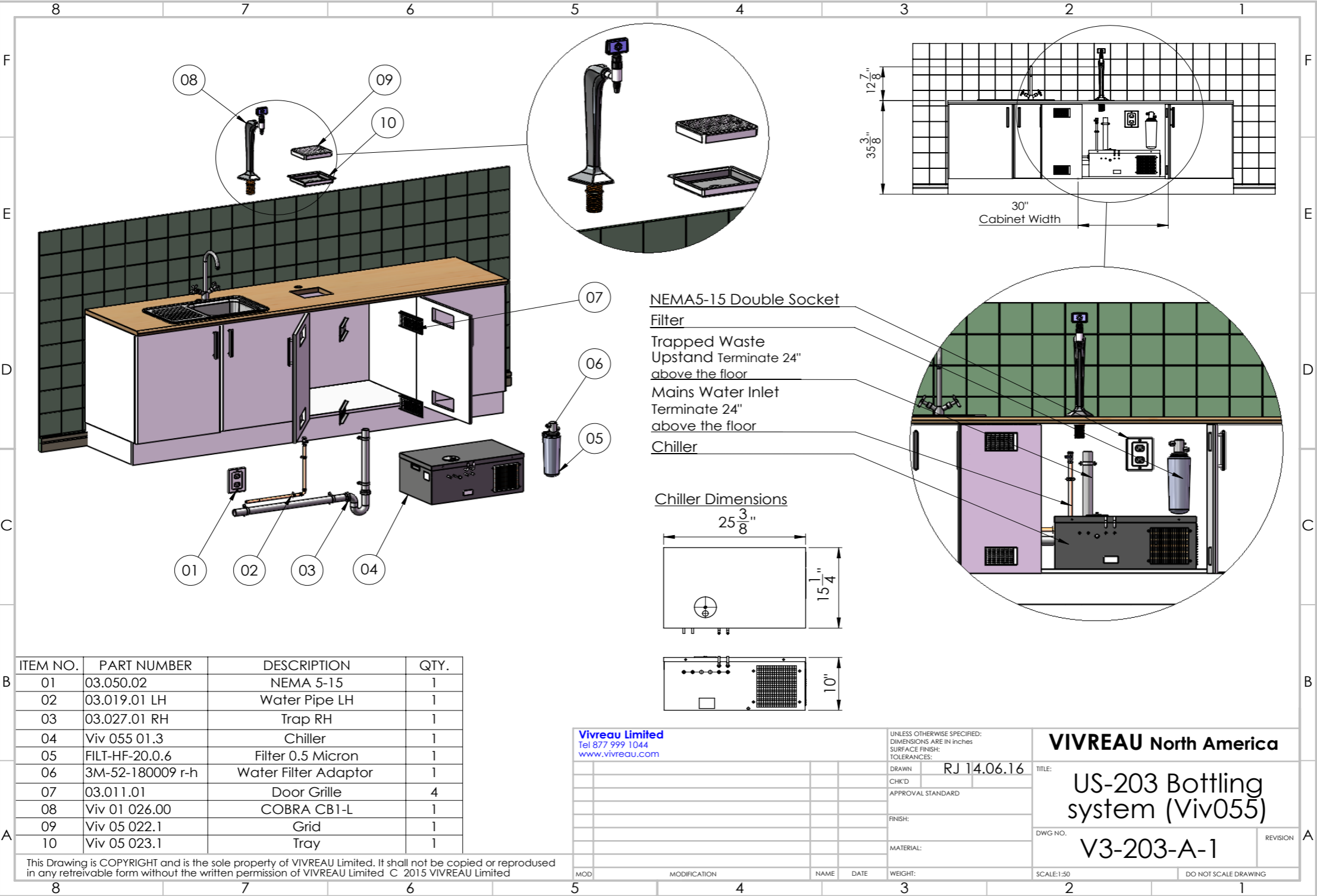
Re-usable glass bottler | V3-203A-1

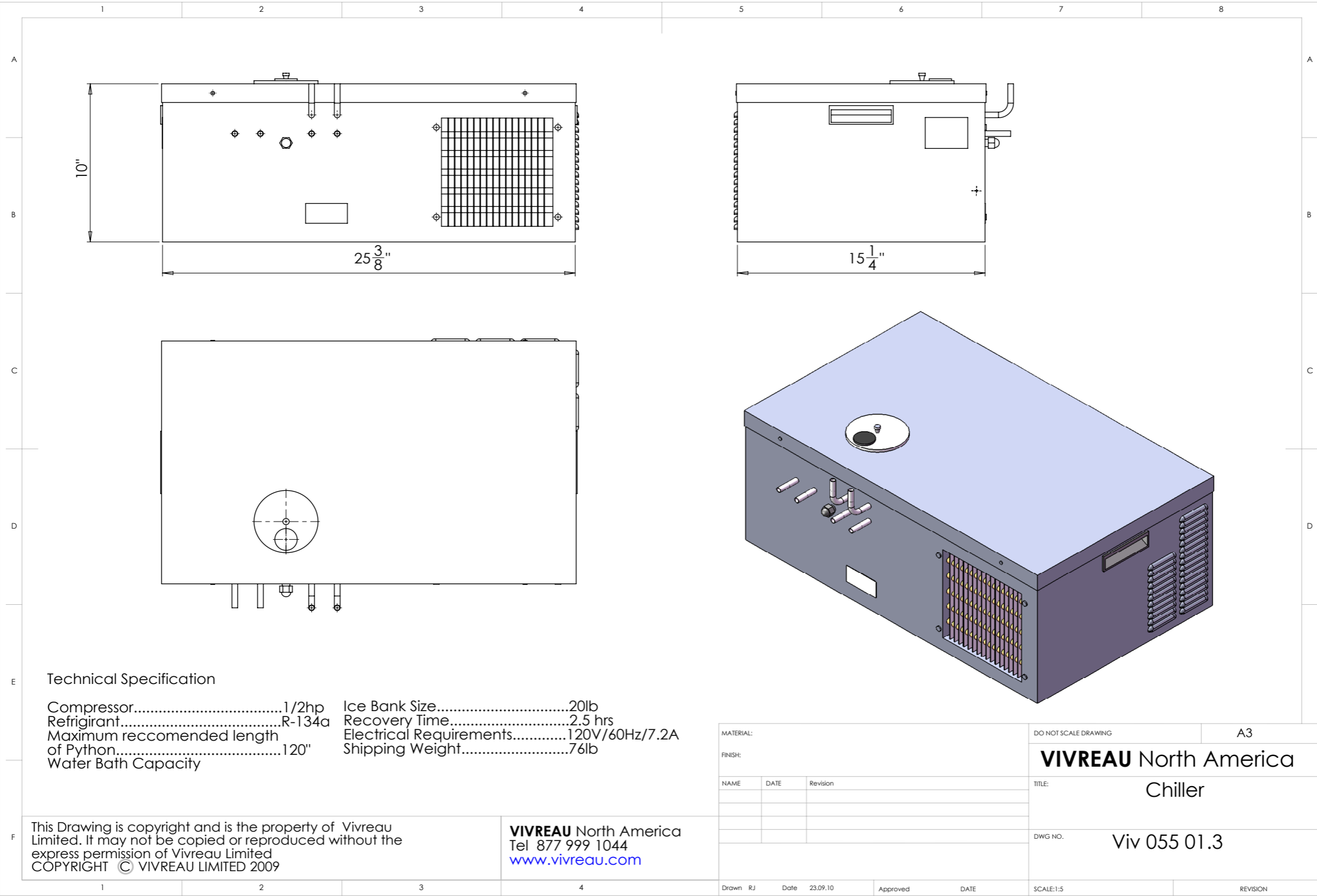


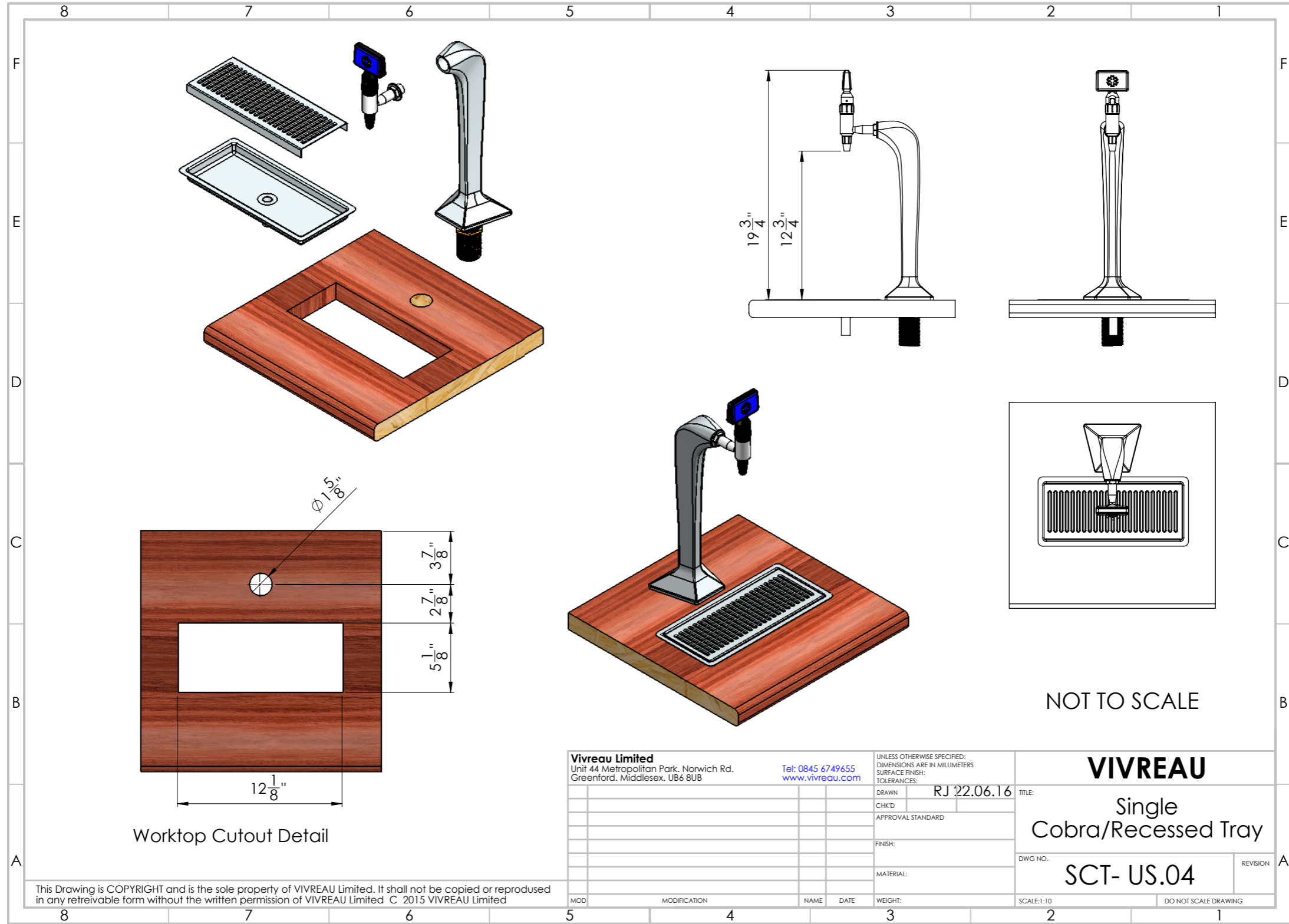
Intertek



- * Dispenses chilled, still water
- * Substantially reduce costs of purchasing pre-bottled mineral waters
- * Re-usable glass bottles in 425ml, 500ml, 750ml and 1 liter sizes
- * Bottles can be customized
- * Save the environment - eliminate regular deliveries, as well as the disposal of empty bottles and packaging
- * High performance ice-bank refrigeration system: capable of delivering very high volumes of chilled water at low temperatures, particularly at peak demand times
- * Power-saving option to reduce electricity
- * Eliminate any storage issues
- * Purpose designed bottle-washing trays, designed to fit most commercial dishwashers
- * Removable tap nozzles for ease of cleaning and sanitizing
- * Stainless steel drip tray





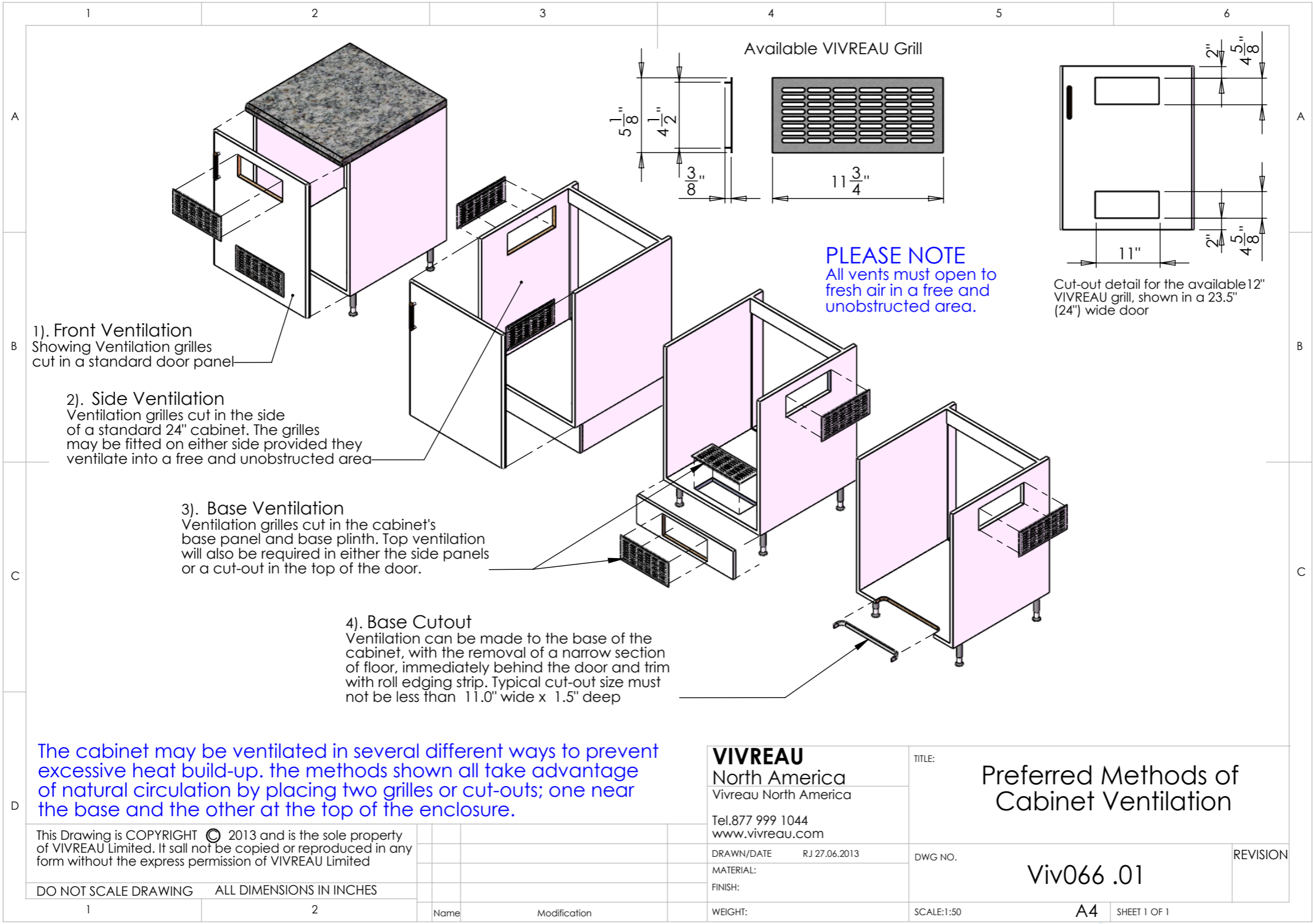


This Drawing is COPYRIGHT and is the sole property of VIVREAU Limited. It shall not be copied or reproduced in any retrievable form without the written permission of VIVREAU Limited C 2015 VIVREAU Limited





Intertek



BOTTLER North America V3-203A-1 Specification Sheet

V3-203A-1



Intertek

**Product Dispensed:**

Advanced micro-filtered, chilled still water

Application:

For the purpose of filling Vivreau re-usable glass bottles

Equipment Dimensions:

See Drawings of component parts, options A and B

Cobra Tap:

19 3/4" Inches (total tap height mounted) *Maximum Counter thickness for mounting cobra tap 1 1/2"

Option A Minimum Space Required:

- * Height 24"
- * Width 30"
- * Depth 24"

Option B Minimum Space Required:

- * Height 29 1/2"
- * Width 24"
- * Depth 24"

The following services are required to be supplied by the customer and must be available prior to installation:

- * 1 potable 1/2" cold water supply terminating in a 1/2" ball valve, 1/2" female pipe thread. (ball valve must be accessible for service and installation)

*The Vivreau system incorporates back flow prevention, any additional back flow devices required by local or state code must also be supplied by the customer prior to installation. There should not be any other filters/pre-filters before the Vivreau system.



Water Supply
1/2" Threaded Ball Valve



Intertek



- * Minimum water pressure 50 PSI
- * Minimum water flow 80 Gallons per hour
- * 1 15amp electrical receptacle (5-15) 120v/60hz
- * Electrical run current 7 amps
- * Cut out for Drip Tray and Cobra as per attached template
- * Drip Tray Drain. Customer needs to supply a rigid vertical pipe that drains to a properly trapped drain according to local codes. The vertical pipe for the drip tray drain must be located inside the installation cabinet and must be a least 1 1/4" ID.
- * If the system is to be installed in an enclosed space or cabinet adequate ventilation must be provided. (failure to provide ventilation will affect water quality)

Location of Services: (all services must be accessible for installation and service)

- * Please ensure all services are kept within 40" of bottling system
- * Water shut-off valve to be located at low level. Please ensure that there is sufficient room for a 12" long fitting to be connected to the shut-off valve.
- * Top of waste receptacle should be located a minimum of 6" below the work surface the drip pan will be installed in.

*The taps must be mounted on the work surface directly above the main system.

Insulation:

Please ensure that all water pipes feeding the Vivreau System are correctly insulated to ensure that the water does not heat up within the pipes prior to entering the Vivreau system. This is essential for water quality reasons.

If the system is to be installed in an enclosed space, adequate ventilation must be provided.

For Indoor Use Only



EUROPE



VIVREAU UK (head office)
+44 (0)845 674 9655
email: info@vivreau.com



VIVREAU Ireland
+44 (0)845 674 9655
email: info@vivreau.ie



VIVREAU Benelux
Tel: +31 (0)6 1190 6790
Email: info@vivreau-benelux.com



VIVREAU Russia
Tel: +74 9 5620 4720
Email: info@vivreau.ru



VIVREAU Switzerland
+41 (0)22 344 86 70
email: info@vivreau.ch



VIVREAU Poland
Email: info@vivreau.pl

NORTH AMERICA



VIVREAU USA
+1 877 999 1044
email: infousa@vivreau.com



VIVREAU Canada
+1 877 999 1044
email: infocanada@vivreau.com

ASIAN PACIFIC



VIVREAU Australia
Tel: +61 3 9590 0886
Email: info@vivreau-pacific.com



VIVREAU New Zealand
Tel. +64 9 377 8621
Email: info@vivreau-pacific.com



VIVREAU Pacific Islands
Tel. +64 9 377 8621
Email: info@vivreau-pacific.com



VIVREAU South Africa
+27 21 671 6306
email: info@vivreau.co.za

AFRICA

