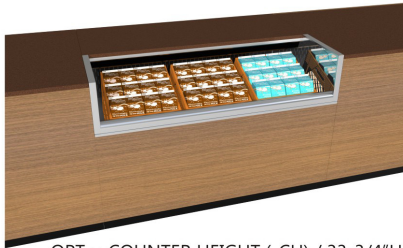


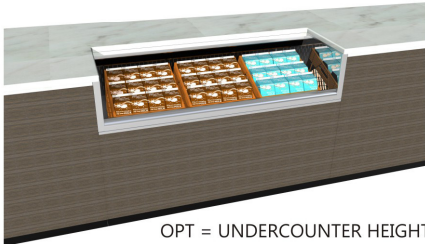
### Refrigerated Self-Service Counter Case - Milk Crates



STD = FREESTANDING (-FS) / 33-3/4"H



OPT = COUNTER HEIGHT (-CH) / 33-3/4"H



OPT = UNDERCOUNTER HEIGHT (-UC) / 32-3/4"H

NOTE: MILK CRATES NOT INCLUDED  
CAPACITY = CO33RM (2), CO43RM (3), CO53RM (4) CO63RM (5)

Conforms to NSF STD 7  
**TYPE II**

- ☐ CO33RM
- ☐ CO43RM
- ☐ CO53RM
- ☐ CO63RM

Lengths include end panels  
36-1/4"L x 32-3/8"D x 33-3/4"H  
47-1/4"L x 32-3/8"D x 33-3/4"H  
59-1/4"L x 32-3/8"D x 33-3/4"H  
71-1/4"L x 32-3/8"D x 33-3/4"H

#### STANDARD FEATURES

- NOTE: ADD SUFFIX TO MODEL # LISTED ABOVE BASED ON MODEL CONFIGURATION CHOSEN BELOW
- Breeze~E (Type-II) w/ EnergyWise s/c refrigeration
- Blue Fin coated coil
- Casters (non-locking) w/ levelers
- Compressor air rear intake, front discharge at toe kick. Front and rear panels cannot be blocked. Must remain 4" from wall
- Condensate pan (self-contained refrig. only)
- Flat front panel
- Integrated average product temperature of 40°F or less
- One piece formed ABS plastic tub
- One year parts & labor; 5 year compressor warranty
- Removable deck pans provide complete access to evaporator coil & refrigeration connections
- Stainless steel interior only
- Toe kick, black

Features	Standard	Options
<b>MODEL CONFIGURATION</b>	<input type="checkbox"/> Freestanding (-FS) Counter ht. 33-3/4"H; freestanding unit w/2 end panels. Top & front panels positioned between end panels	<input type="checkbox"/> Counter height (-CH) Counter ht. 33-3/4"H; Top & front panels extended over end panels to blend w/adj. counters (supplied by others) <input type="checkbox"/> Undercounter height (-UC) Undercounter ht. 32-3/4"H; front panel extends over end panels to blend w/adj. counters (supplied by others). Counter surface (supplied by others) extends over top of unit
<b>EXTERIOR COLOR</b>	<input type="checkbox"/> Laminated (non-premium) Confirm pattern/grain direction	<input type="checkbox"/> Laminated (premium) Confirm pattern/grain direction <input type="checkbox"/> Stainless steel exterior
<b>END PANEL LEFT</b>	<input type="checkbox"/> Square full end panel w/mirror	<input type="checkbox"/> Curved end panel w/mirror (-FS model only) <input type="checkbox"/> No end panel w/ synchronized defrost
<b>END PANEL RIGHT</b>	<input type="checkbox"/> Square full end panel w/mirror	<input type="checkbox"/> Curved end panel w/mirror (-FS model only) <input type="checkbox"/> No end panel w/ synchronized defrost
<b>EXTERIOR BACK PANEL</b>	<input type="checkbox"/> Solid back panel, black	<input type="checkbox"/> Solid back panel, stainless steel
<b>ELECTRICAL CONNECT</b>	<input type="checkbox"/> 6' straight blade power cord (self-cont.)	<input type="checkbox"/> 6' locking power cord (self-cont.) <input type="checkbox"/> Electrical leads (remote)
<b>REFRIGERATION</b>	<input type="checkbox"/> Breeze~E (Type-II) w/ EnergyWise s/c refrigeration	<input type="checkbox"/> Note: Remote doesn't incl Conds unit. Floor drain reqd. <input type="checkbox"/> Remote w/thermostat, solenoid & TXV
<b>MISCELLANEOUS</b>		<input type="checkbox"/> Second year parts & labor warranty (excludes compressor)
<b>ACCESSORIES</b>		<input type="checkbox"/> Clean Sweep® coil cleaner (n/a w/remote) <input type="checkbox"/> Solid security cover, removable, locking

**Option Notes:** 1 - See tech spec for remote load reqmts

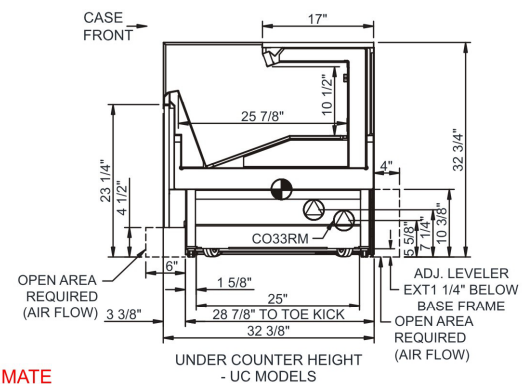
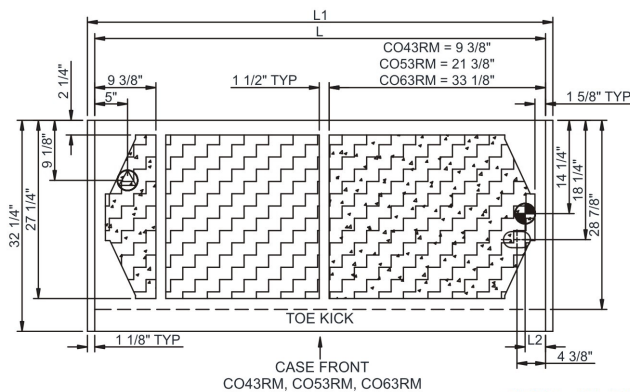
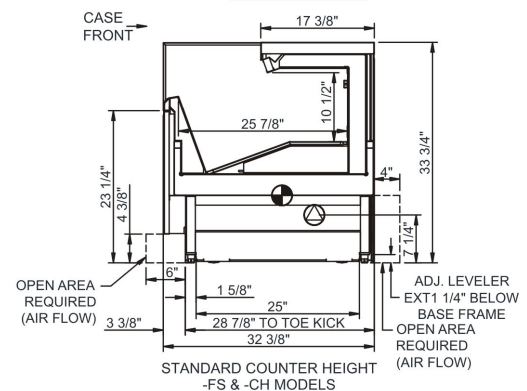
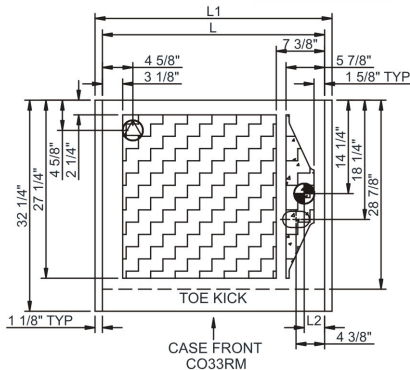
## Product Specifications

Zone	Intended Product To Be Displayed
------	----------------------------------

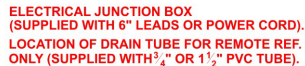
Warmest Avg Prod Temp ° F	
1	70
2	70
3	70
4	70
5	70
6	70
7	70
8	70
9	70
10	70
11	70
12	70
13	70
14	70
15	70
16	70
17	70
18	70
19	70
20	70
21	70
22	70
23	70
24	70
25	70
26	70
27	70
28	70
29	70
30	70
31	70
32	70
33	70
34	70
35	70
36	70
37	70
38	70
39	70
40	70
41	70
42	70
43	70
44	70
45	70
46	70
47	70
48	70
49	70
50	70
51	70
52	70
53	70
54	70
55	70
56	70
57	70
58	70
59	70
60	70
61	70
62	70
63	70
64	70
65	70
66	70
67	70
68	70
69	70
70	70
71	70
72	70
73	70
74	70
75	70
76	70
77	70
78	70
79	70
80	70
81	70
82	70
83	70
84	70
85	70
86	70
87	70
88	70
89	70
90	70
91	70
92	70
93	70
94	70
95	70
96	70
97	70
98	70
99	70
100	70

40

SIDE VIEW



NOTE: ALL DIMENSIONS APPROXIMATE



Model Technical Specifications																
Model	L"	L1"	L2"	System Circuit Volts			Phs	Freq	Amps ***	Watts	Wires	NEMA Plug	SST	Conv. Rack BTUH	Para. Rack BTUH	Est Wt
CO33RM	N/A	36.25	3.13	Remote(Type I)	Circuit #1	110-120	1	60	0.44	31	2+G	Leads Multiple	20.00	1037	960	600
				Self-Contained	Circuit #1	110-120	1	60	12.00	1,120	2+G	5-15P or L5-15P	N/A	N/A	N/A	
CO43RM	N/A	47.25	3.13	Remote(Type I)	Circuit #1	110-120	1	60	0.66	57	2+G	Leads Multiple	20.00	1210	1120	700
				Remote(Type II)	Circuit #1	110-120	1	60	0.66	57	2+G	Leads Multiple	20.00	1404	1300	
				Self-Contained	Circuit #1	110-120	1	60	12.00	1,124	2+G	5-15P or L5-15P	N/A	N/A	N/A	
CO53RM	N/A	59.25	3.13	Remote(Type I)	Circuit #1	110-120	1	60	0.52	40	2+G	Leads Multiple	20.00	1512	1400	750
				Self-Contained	Circuit #1	110-120	1	60	12.00	1,006	2+G	5-15P or L5-15P	N/A	N/A	N/A	
CO63RM	N/A	71.25	3.13	Remote(Type II)	Circuit #1	110-120	1	60	1.20	102	2+G	Leads Multiple	20.00	2160	2000	1,100
				Self-Contained	Circuit #1	110-120	1	60	12.00	1,012	2+G	5-20P or L5-20P	N/A	N/A	N/A	

\*\*\* Does not include electric defrost on freezer models.

All Models	<p>Accordance with AHRI Std 1200</p> <p>ETL Listed to UL 471</p> <p>ETL Listed to CAN/CSA 22.2 No. 120</p> <p>ETL Sanitation to NSF 7</p>
------------	-------------------------------------------------------------------------------------------------------------------------------------------



In Accordance with  
**AHRI Std 1200**

**DOE 2017**  
Energy Efficiency  
Compliant

- 1) ELECTRICAL NOTE: If GFCI is required, a GFCI breaker MUST be used in lieu of a GFCI receptacle
- 2) 33" Minimum entry door clearance required (w/out shipping skid)
- 3) Performance issues (product temperatures, water on floor, etc.) caused by adverse conditions are not covered by warranty.
- 4) Keep unit at least 15' from exterior doors, overhead HVAC vents, or any air curtain disruption.
- 5) Do not expose unit to direct sunlight or any heat source (ovens, fryers, etc.).

**⚠ WARNING:** This product can expose you to chemicals, including Urethane (Ethyl Carbamate), which are known to the State of California to cause cancer and birth defects or other reproductive harm. For more information go to [www.P65Warnings.ca.gov](http://www.P65Warnings.ca.gov).