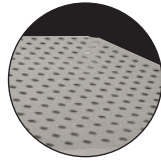




PRESTIGE
Signature Series

Recessed Bar Drainboards 25" and 30" Wide Units



Removable Perforated
Drainboard Top

Item #: _____ Qty #: _____
 Model #: _____
 Project #: _____



PRGS-19 Series
25" Wide Units



PRGS-24 Series
30" Wide Units

FEATURES:

- Free-standing unit.
- Holds multiple tiers of glassware.
- Removable perforated drainboard top.
- 14" side splashes.
- Stainless steel top, sides and legs with adjustable stainless steel bullet feet.
- Adjustable stainless steel side cross-bracing.
- Sound deadened.
- 7" backsplash.

PRGS-24 Series has rear deck for extra storage

MATERIAL:

- Shelf:** 18 gauge, 300 stainless steel.
- Sides:** 14 gauge, 300 stainless steel.
- Backsplash:** 20 gauge, 300 stainless steel.
- Legs:** 1 5/8" O.D. 18 gauge, 300 stainless steel with 1" stainless steel bullet feet.

MECHANICAL:

1" IPS drain

Overall Length (L)	25" WIDE Model #	Approx. Weight	Approx. Cu. Ft.	Dist. To Drain (A)	Dist. To Drain (B)
12"	PRGS-19-12	40 lbs.	8	9"	4 3/4"
18"	PRGS-19-18	45 lbs.	8	15"	4 3/4"
24"	PRGS-19-24	52 lbs.	8	21"	4 3/4"
30"	PRGS-19-30	59 lbs.	12	27"	4 3/4"

Overall Length (L)	30" WIDE Model #	Approx. Weight	Approx. Cu. Ft.	Dist. To Drain (A)	Dist. To Drain (B)
12"	PRGS-24-12	45 lbs.	10	9"	9 3/4"
18"	PRGS-24-18	52 lbs.	10	12"	9 3/4"
24"	PRGS-24-24	59 lbs.	10	18"	9 3/4"
30"	PRGS-24-30	66 lbs.	14	24"	9 3/4"



Customer Service Available To Assist You 1-800-645-3166 8:30 am - 8:00 pm E.S.T.

For Orders & Customer Service:
 Email: customer@advancetabco.com or Fax: 631-242-6900

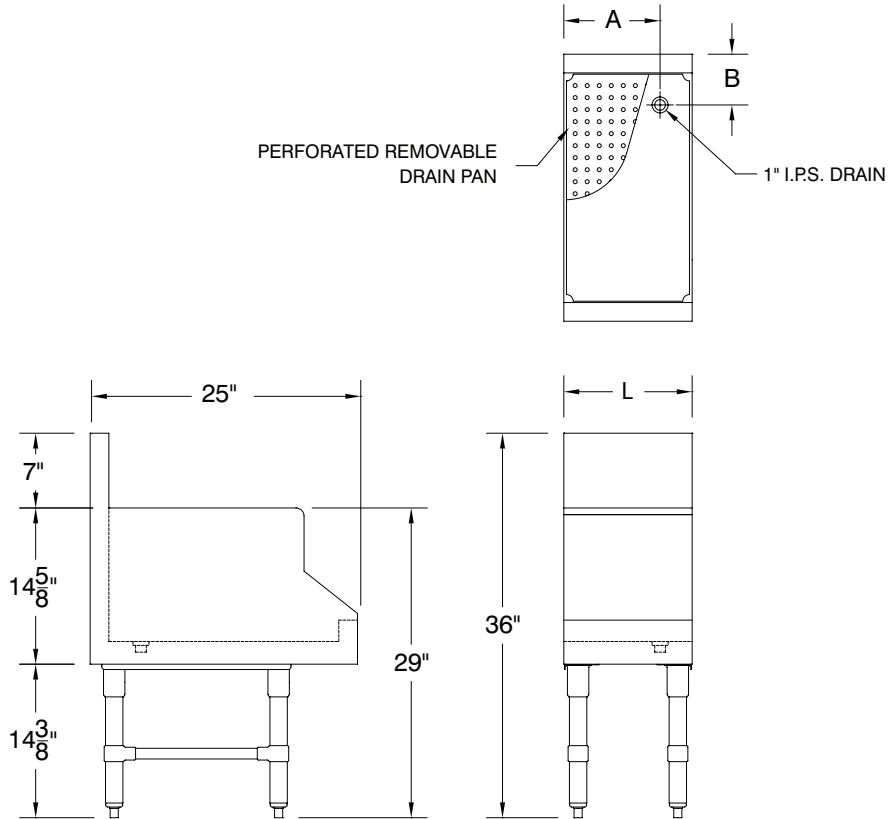
For Smart Fabrication™ Quotes:
 Email: smartfab@advancetabco.com or Fax: 631-586-2933

DIMENSIONS and SPECIFICATIONS

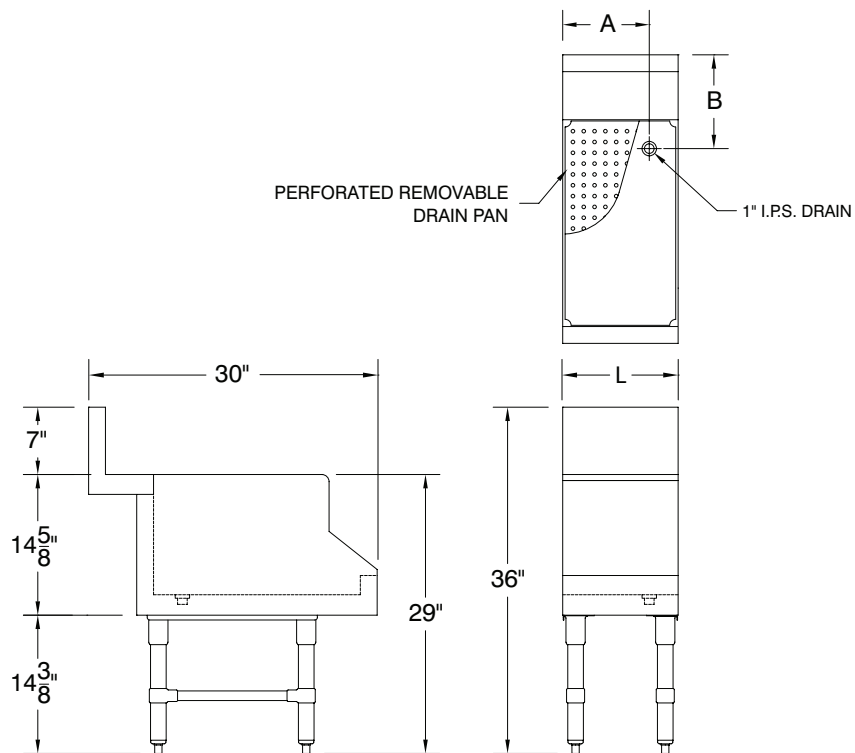
TOL Overall: $\pm .500"$ Interior: $\pm .250"$

ALL DIMENSIONS ARE TYPICAL

PRGS-19 Series



PRGS-24 Series



ADVANCE TABCO is constantly engaged in a program of improving our products. Therefore, we reserve the right to change specifications without prior notice.

© ADVANCE TABCO, OCTOBER 2016