

# Tray Delivery Carts

## Premier Series™ High Capacity - Stainless Steel



Model 835



### Specifications

Unit shall be of welded and riveted type 304 stainless steel construction and shall accommodate either 14" x 18" (356 x 457 mm) or 15" x 20" (381 x 508 mm) meal trays. Back, top and sides shall be of 18-gauge stainless steel. Floor/base shall be of 18-gauge stainless steel and shall have drain(s) to facilitate cleaning. Tray compartment(s) shall feature louvered vents on side and back panels. Angle style tray ledges shall be of 16-gauge stainless steel welded to 14-gauge stainless steel upright frames with 5" (127 mm) spacing. Ledge frame assemblies shall be adjustable to accommodate 14" x 18" or 15" x 20" (508 mm) trays and shall be removable to facilitate cleaning. Door(s) shall be of double pan construction, with 1" (25 mm) rigid fiberglass insulation for sound deadening and shall have a stainless steel flush-mount paddle latch. Door(s) shall be mounted on heavy-duty stainless steel lift-off hinges which allow 270° door swing. Unit shall feature non-marking full-perimeter bumper and stainless steel push handle. Casters shall be extra-load 8" (203 mm) diameter, two fixed and two swivel with brakes, with 2" (51 mm) wide non-marking rounded cushion tread wheels. Unit shall be NSF listed.

#### Models 831 and 832 only:

Casters shall be extra-load 6" (152 mm) diameter, two fixed and two swivel with brakes, with 2" (51 mm) wide non-marking rounded cushion tread wheels.

### Low profile design for safe, full view during transport.

- Perimeter bumper protects your furnishings and doors.
- Accepts 14" x 18" (356 x 457 mm) or 15" x 20" (381 x 508 mm) trays.
- 5" (127 mm) ledge spacing.
- Doors conveniently open 270° for easy tray access.
- Designed for rugged acute care foodservice use.
- Easy to clean and sanitize. Simply wipe down or steam clean.
- Removable ledge panels for easy cleaning.

Spec. # \_\_\_\_\_

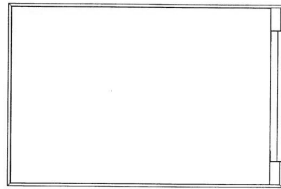
AIA # \_\_\_\_\_

# Tray Delivery Carts

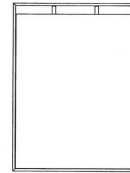
## Premier Series™ High Capacity - Stainless Steel

### Optional Accessories

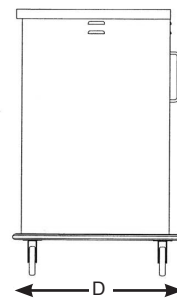
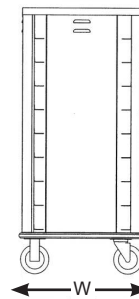
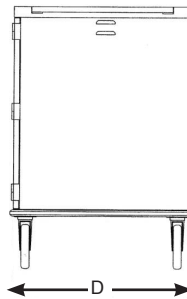
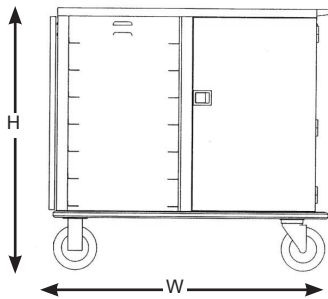
- 8" diameter casters (Models 831 and 832)
- Extra push handle
- Identification card holder
- Decorative laminate door panels



2 Compartment  
Top View



1 Compartment  
Top View



AutoCAD drawings available through KCL CADalog

### Product Information

| Model | Tray Capacity   | Ledge Spacing | # of Interior Compartments | Overall Size   |               |            | Lake-Glide® Casters |      | Case Weight |       |
|-------|---|---------------|----------------------------|----------------|---------------|------------|---------------------|------|-------------|-------|
|       |   |               |                            | W              | D             | H          | Type                | Dia. | lb.         | (kg.) |
| 831   | 18 ea. 14" x 18" (356 x 457) or 15" x 20" (381 x 508) | 5" (127)      | 1                          | 36-3/4" (908)  | 26-1/8" (664) | 56" (1422) | 2 swivel, 2 fixed   | 6"   | 300         | (136) |
| 832   | 20 ea. 14" x 18" (356 x 457) or 15" x 20" (381 x 508) | 5" (127)      | 1                          | 36-3/4" (908)  | 26-1/8" (664) | 61" (1549) | 2 swivel, 2 fixed   | 6"   | 320         | (145) |
| 835   | 24 ea. 14" x 18" (356 x 457) or 15" x 20" (381 x 508) | 5" (127)      | 2                          | 51-1/8" (1299) | 34-1/8" (867) | 41" (1041) | 2 swivel, 2 fixed   | 8"   | 425         | (193) |
| 836   | 28 ea. 14" x 18" (356 x 457) or 15" x 20" (381 x 508) | 5" (127)      | 2                          | 51-1/8" (1299) | 34-1/8" (867) | 46" (1168) | 2 swivel, 2 fixed   | 8"   | 450         | (205) |
| 837   | 32 ea. 14" x 18" (356 x 457) or 15" x 20" (381 x 508) | 5" (127)      | 2                          | 51-1/8" (1299) | 34-1/8" (867) | 51" (1295) | 2 swivel, 2 fixed   | 8"   | 475         | (216) |

Measurements in ( ) denote metric millimeters, unless otherwise specified.



Lakeside Manufacturing, Inc.  
4900 West Electric Avenue • West Milwaukee, WI 53219 U.S.A.  
800-558-8565 • 414-902-6400 • Fax 414-902-6446 • www.eLakeside.com