



NOVA™ REFRIGERATORS



PROJECT:

ITEM NUMBER:

MODEL NUMBER:

SPECIFICATIONS FOR: NR241, NR522 & NR803

- **Exterior Finish:** Exterior front, sides and doors are stainless steel. The exterior top, bottom and back are galvanized steel. All exterior joints and seams fold in without lap joints. No exposed raw edges.
- **Interior Finish:** Interior liner and interior door panel are stainless steel.
- **Insulation:** The complete cabinet and door(s) are foamed-in-place with polyurethane insulation.
- **Hardware:** Heavy duty, pivot hinges; centered key locks; horizontal work flow pull handles; self adjusting magnetic gaskets; 4" diameter casters (four casters on one and two door models and six casters on three door model); and 3 epoxy coated shelves per door section - standard.
- **Electrical:** All models are standard with an interior LED light activated by switches for each door.
- **Instrumentation:** Microprocessor with digital display and Hi/Lo audio/visual alarm.
- **Refrigeration:** Complete top mounted refrigeration system. A copper tube, aluminum fin evaporator. The condensate is collected and automatically evaporated from an energy efficient hot gas vaporizer. Refrigerant flow is controlled by a capillary tube. R-134a refrigerant. Operating temperature: +38°F.
- **Approvals:** UL, C-UL and UL Sanitation listed**
CEC (California Energy Commission) certified
DOE (Department of Energy) listed

STANDARD FEATURES

- Air-cooled condensing unit
- Automatic condensate evaporation
- Automatic defrost
- Casters
- Epoxy coated shelves
- Capillary tube system
- Field reversible doors
- Hi/Lo audio and visual alarms
- Horizontal work flow handle
- Key locks
- Magnetic gasketing
- Microprocessor with digital display
- Operating temperature: +38°F
- Polyurethane insulation
- R-134 refrigerant
- Recessed interior LED light
- Stainless steel interior
- Stainless steel exterior
- Stocked for same day shipment
- Approvals: UL, C-UL & UL Sanitation** and DOE listed, CEC certified
- Warranties: 3 year parts & labor, 5 year compressor

OPTIONAL FEATURES*

- Expansion valve system
- Extra shelves
- Full glass doors
- Half glass doors
- Half solid doors
- Legs in lieu of casters
- Pan slides
- Remote system with TXV available
- Stainless steel backs
- 220/50/1 for export



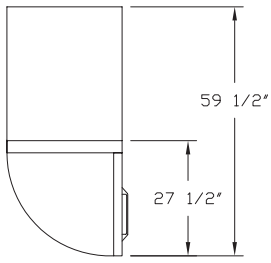
Nor-Lake, Inc.
Registered to ISO 9001:2008
File No. 10001816

1, 2 & 3 DOOR REFRIGERATORS

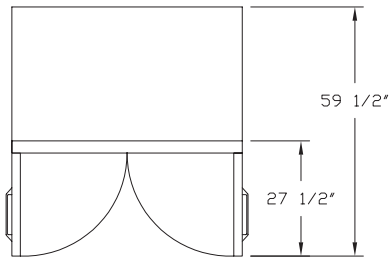
* Most options are available two weeks from receipt of order. Please contact us for specific questions.

**C-UL is Underwriters Laboratories Safety Certification Mark which indicates that UL has tested the equipment to applicable CSA Standards.

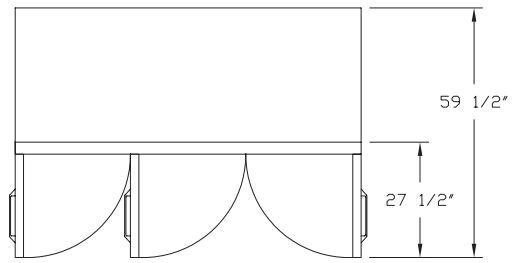
**UL Sanitation is Underwriters Laboratories Sanitation Mark which indicates that UL has tested the equipment to applicable NSF Standards.



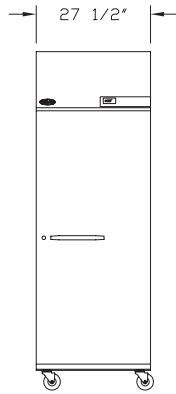
**NR241
TOP VIEW**



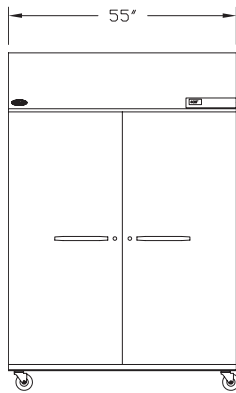
**NR522
TOP VIEW**



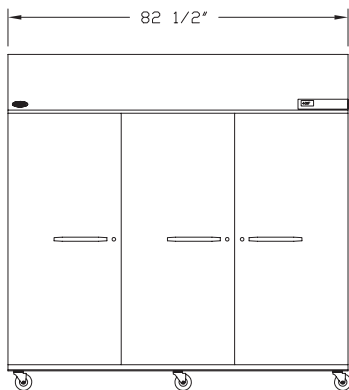
**NR803
TOP VIEW**



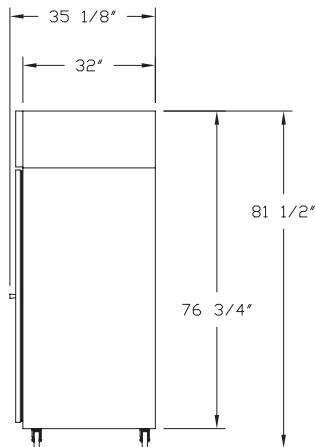
**NR241
FRONT VIEW**



**NR522
FRONT VIEW**



**NR803
FRONT VIEW**



SIDE VIEW

SPECIFICATIONS

| Models | NR241 | NR522 | NR803 |
|-----------------------------------|--------------|--------------|--------------|
| <i>Crated Weight (lbs) (kg)</i> | 365 (164) | 545 (245) | 750 (338) |
| <i>Crated Height (in) (cm)</i> | 81 (203) | 81 (203) | 81 (203) |
| <i>Crated Width (in) (cm)</i> | 31 (78) | 59 (148) | 86 (215) |
| <i>Crated Depth (in) (cm)</i> | 38 (95) | 38 (95) | 38 (95) |
| <i>Interior Height (in) (cm)</i> | 59 (148) | 59 (148) | 59 (148) |
| <i>Interior Width (in) (cm)</i> | 23-1/2 (59) | 51 (128) | 78-1/2 (196) |
| <i>Interior Depth (in) (cm)</i> | 30 (75) | 30 (75) | 30 (75) |
| <i>Overall Height (in) (cm) *</i> | 81-1/2 (204) | 81-1/2 (204) | 81-1/2 (204) |
| <i>Overall Width (in) (cm)</i> | 27-1/2 (69) | 55 (138) | 82-1/2 (206) |
| <i>Overall Depth (in) (cm)</i> | 35-1/8 (88) | 35-1/8 (88) | 35-1/8 (88) |
| <i>Gross Cubage (CuFt) (L)</i> | 24.1 (689) | 51.9 (1469) | 79.9 (2261) |
| <i>Shelf Area (SqFt) (Sqm)</i> | 12.8 (1.17) | 28.6 (2.63) | 42.9 (3.94) |
| <i>Number of Shelves</i> | 3 | 6 | 9 |
| <i>Number of Casters</i> | 4 | 4 | 6 |
| <i>Number of Legs (Optional)</i> | 4 | 4 | 6 |
| <i>Condensing Unit Size</i> | 1/4 HP | 1/3 HP | 1/2 HP |
| <i>Refrigerant</i> | R-134a | R-134a | R-134a |
| <i>Electrical Characteristics</i> | 115/60/1 | 115/60/1 | 115/60/1 |
| <i>Cord & Plug Furnished</i> | Yes | Yes | Yes |
| <i>NEMA Plug Configuration</i> | 5-15P | 5-15P | 5-15P |
| <i>Total Amp Draw</i> | 4.9 | 8.0 | 9.1 |

* The overall heights shown in the table and drawings are with casters. With optional 6" legs, the overall height is 82-3/4 inches (207 cm).

Specifications subject to change without notice.



Revision Date: 08/13
©2013 NOR-LAKE, INC.
Printed in the U.S.A.
Part Number: 039979