



Project _____
 Item _____
 Quantity _____
 CSI Section 11400 _____
 Approval _____
 Date _____

NOBLE UH30-FND

NOBLE UH30-FND



Standard Features

- Fill and Dump design
- Automatic tank fill
- Push button start
- Built-in booster heater with Sani-Sure™ final rinse system
- Stainless steel wash pump
- Solid state controls with three selectable cycles
- Digital LED temperature displays
- Delime cycle
- Simplified controls allow easy access for operation and service
- Door switch
- Automatic pumped drain for floor and wall drain installations
- Labyrinth type door design
- Above water scrap basket
- Built-in chemical pumps and priming switches
- One (1) each peg and combination rack included

Mandatory Specs

Specify voltage _____

Options

- Water Hammer Arrestor
- Pressure Regulator
- Back Panel
- Drain Water Tempering Kit
- Scale Prevention System (SPS)
- Replacement Cartridge for SPS
- Casters (adds 3/4" to height)
- Tie Down

Accessories

- 36-Compartment Rack
 - 4 1/8" tall (105 mm)
 - 5 5/8" tall (143 mm)
 - 7" tall (178 mm)
- Combination Rack
- Peg Rack
- Machine Stand
 - 6" (152 mm) high
 - 18" (457 mm) high

Specifications

- Uses 1.1 gallons (4.2 liters) of water per rack
- Cleans 30 (24)* racks per hour
- Three selectable timed cycles
- Powerful 1 hp wash pump motor
- Fresh water rinse eliminates wash water contamination
- Air insulated between body and stainless steel housing
- Durable stainless steel construction

Notes:

A vent hood is not recommended above the NOBLE UH30-FND as it does not produce excessive vapors. *Always check with the local building code to know what type of ventilation is required for commercial dish machine installations in your area.*

Normal operation of the UH30-FND generates steam that may escape from the door. Materials such as wood laminate, veneers, etc. are unsuitable for use in areas exposed to dishwasher steam and detergents. Stainless steel or other moisture-resistant shields are recommended for surfaces adjacent to UH30-FND sides and top.



Intertek

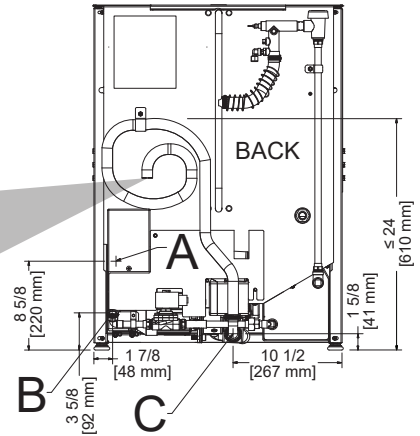
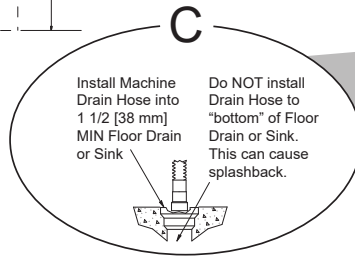
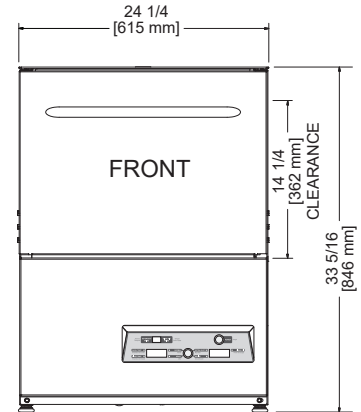
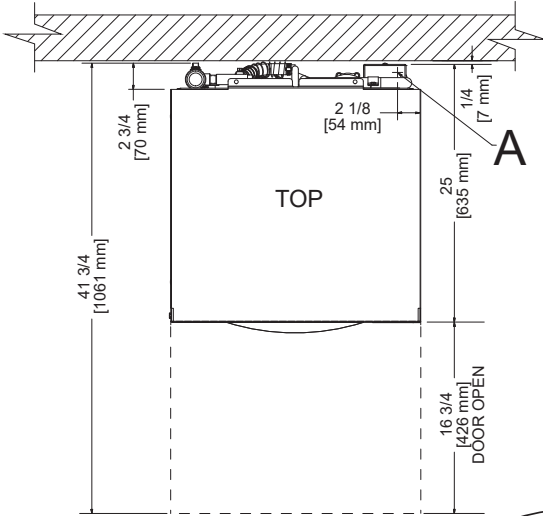


Intertek

*Racks per hour calculated with NSF suggested load time of thirty (30) seconds for front opening type

LEGEND

- A - Electrical Connection
 - B - Water Inlet (with 6' Hose)
(3/4" Male GHT, connect to true 1/2" ID line, MIN 110 °F)
 - C - Drain Hose
(1" ID, install into 1 1/2" MIN Drain with Air-gap)
- All dimensions from the floor can be increased 1" using the machine's adjustable feet.



MODEL NO.	MACHINE DIMENSIONS					WALL CLEARANCE	SHIPPING INFORMATION					
	INSIDE CLEARANCE HEIGHT	INSIDE CLEARANCE WIDTH	INSIDE CLEARANCE DEPTH	DOOR OPEN DEPTH			WEIGHT	CLASS	CUBE	HEIGHT	WIDTH	DEPTH
WAREFORCE UH30-FND	14-1/4" (362 mm)	20" (508 mm)	20" (508 mm)	41-3/4" (1061 mm)	1/4" (7 mm)	221 lbs (100 kg)	85	19.64 cu. ft.	39" (991 mm)	29" (737 mm)	30" (762 mm)	

OPERATING CAPACITY (Normal cycle)	
Racks per Hour	30 (24)*
Dishes per Hour	750
Glasses per Hour	1,080

WATER REQUIREMENTS	
Incoming Water Temperature (min)	110 °F (43.3 °C)
Gallons per Rack	1.1 gal (4.2 L)
Gallons per Hour	33.0 gal (124.92 L)
Gallons per Hour**	26.4 gal (99.93 L)
Flow Pressure (PSI)	20 ± 5
Waterline Size (NPT)	3/4" Male GHT (connect to true 1/2" ID line)
Drainline Size (ID)	1"

OPERATING CYCLE (seconds)				
CYCLE	WASH	RINSE	DWELL	TOTAL CYCLE
Normal	82	10	28	120
Heavy	142	10	28	180
Extra Heavy	262	10	28	300

OPERATING TEMPERATURES	
Wash	150° F (65.6° C)
Rinse	180° F (82.2° C)

ELECTRICAL REQUIREMENTS			
Power Supply	Total Load	Minimum Circuit Ampacity	Maximum Overcurrent Protection
208/60/1	37.2 A	38.5 A	40 A
230/60/1	40.7 A	41.9 A	45 A

ELECTRICAL SPECIFICATIONS	
Wash Pump	1 hp
Rinse Tank Heater 208V	6.7kW
Rinse Tank Heater 230V	8.2kW

HOW TO SPECIFY: NOBLE UH30-FND

*Racks per hour calculated with NSF suggested load time of thirty (30) seconds for front opening types
 **Gallons per hour calculated with NSF suggested load time of thirty (30) seconds for front opening types