



Project _____
 Item _____
 Quantity _____
 CSI Section 11400 _____
 Approval _____
 Date _____

NOBLE II

NOBLE II NOBLE II-CMR NOBLE II-CML



Standard Features

- Electronic timer
- Built in waste accumulator
- Delimer switch for easy removal of hard water deposits
- Removable scrap screen
- Air gap instead of vacuum breaker
- Door switch
- Convenient top mounted controls
- Auto start
- Interchangeable upper and lower stainless steel wash / rinse arms
- Internal sump saves space
- Wash / rinse thermometer
- Low chemical indicator lights
- Stainless steel adjustable bullet feet

Mandatory Specs

Specify voltage _____

Options

- Water Hammer Arrestor
- Scaltrol
- Flanged Feet
- Audible Low Product Alarm

Accessories

- 36-Compartment Rack
 - 4-1/8" tall (105 mm)
 - 5-5/8" tall (143 mm)
 - 7" tall (178 mm)
- Combination Rack
- Peg Rack

Specifications

- Uses 1.06 gallons (4.0 liters) of water per rack
- 82 (78)* racks per hour
- Single point electrical connection
- Self-draining stainless steel pump eliminates soil/detergent carryover between wash and rinse cycles
- Fill and Dump design disposes of dirty water, replacing it with a fresh water rinse every cycle
- Dual-point drain connections allow for versatile installations
- 17-1/4" (438mm) vertical inside clearance
- Built-in chemical pumps and priming switches
- Accommodates two racks side by side
- Durable stainless steel construction



Intertek

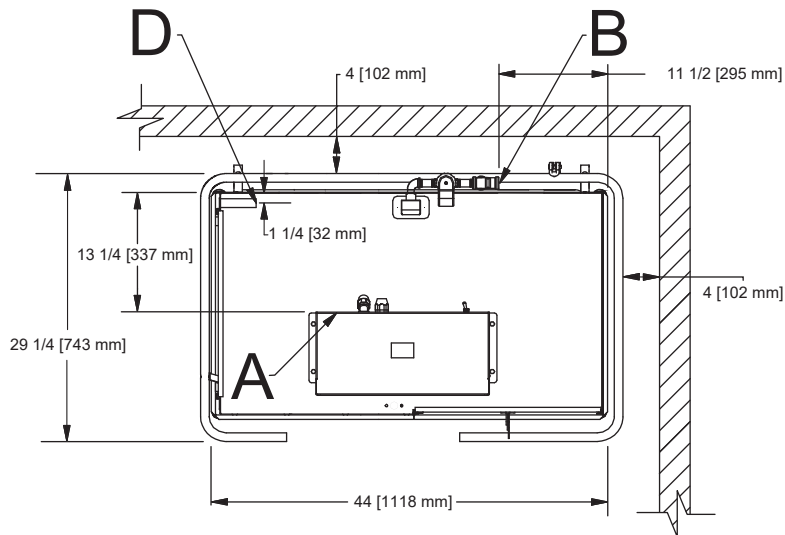


Intertek



*Racks per hour calculated with NSF suggested load time of five (5) seconds for door-type (straight thru)

NOBLE II - CMR



LEGEND

- A - Electrical Connection
- B - Water Inlet (3/4" NPT)
- C - Drain Connection (2" NPT)
- D - Chemical Connection

All dimensions from the floor can be increased 1 1/8" using the machine's adjustable feet.

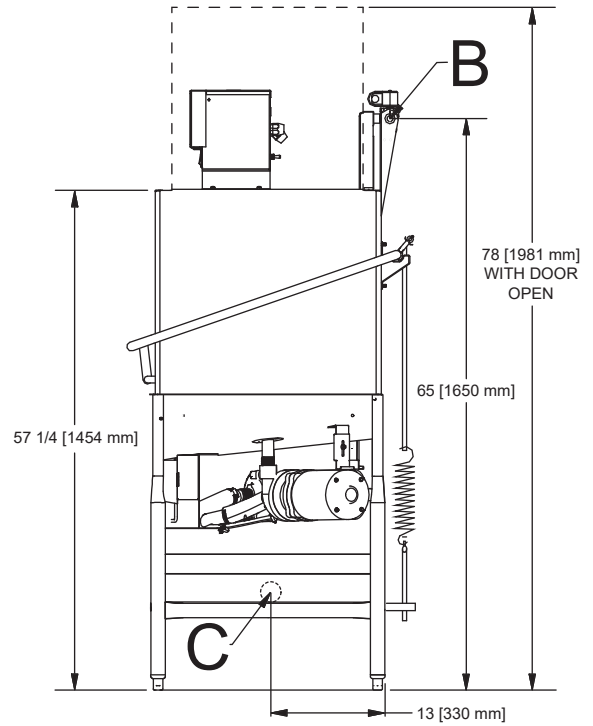
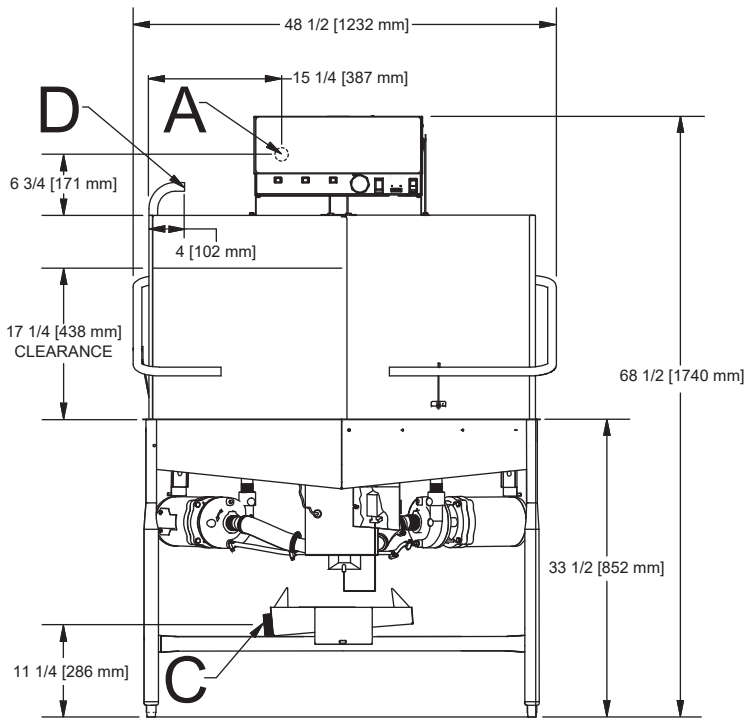
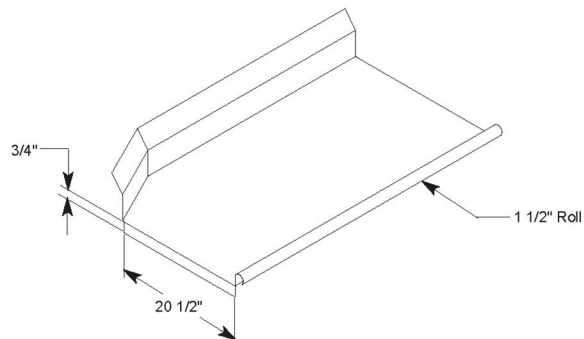
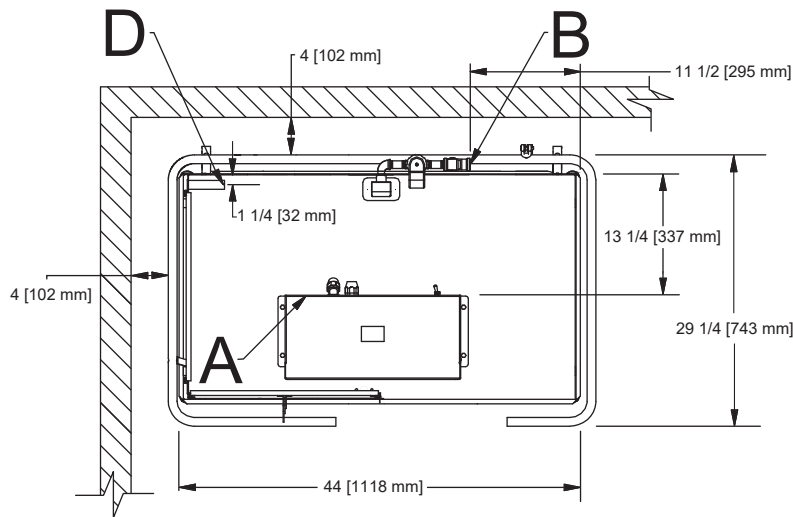


Table Dimensions
Connection to Dishmachine



NOBLE II - CML



LEGEND

- A - Electrical Connection
- B - Water Inlet (3/4" NPT)
- C - Drain Connection (2" NPT)
- D - Chemical Connection

All dimensions from the floor can be increased 1 1/8" using the machine's adjustable feet.

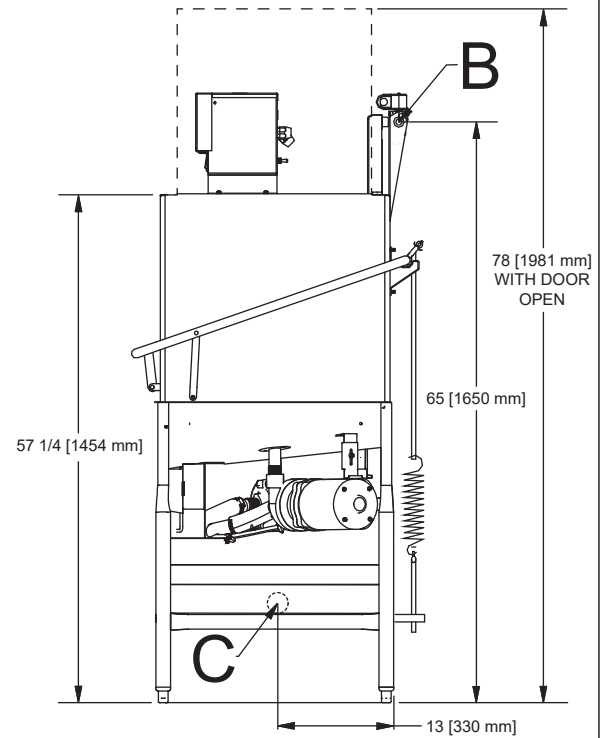
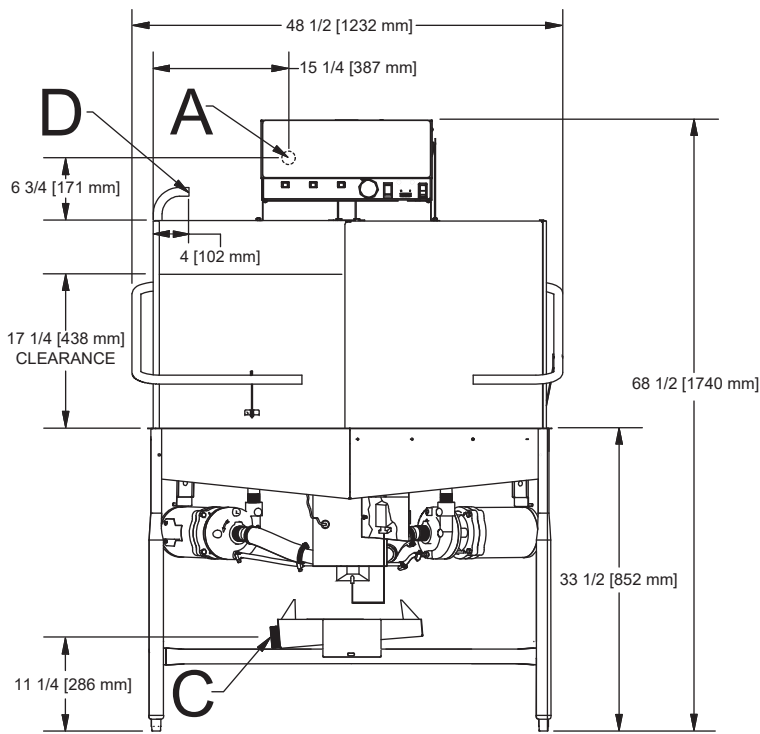
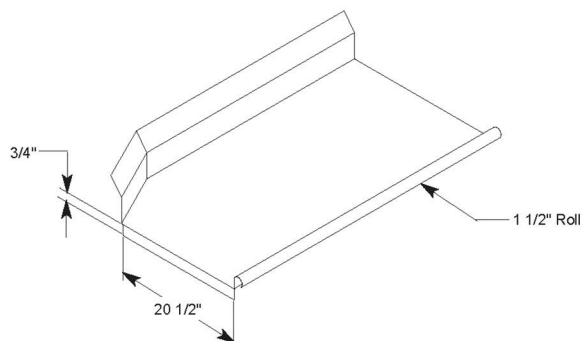
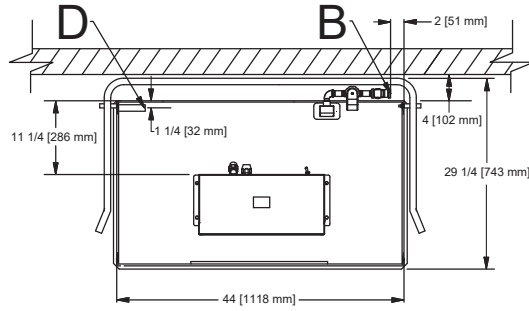


Table Dimensions
Connection to Dishmachine

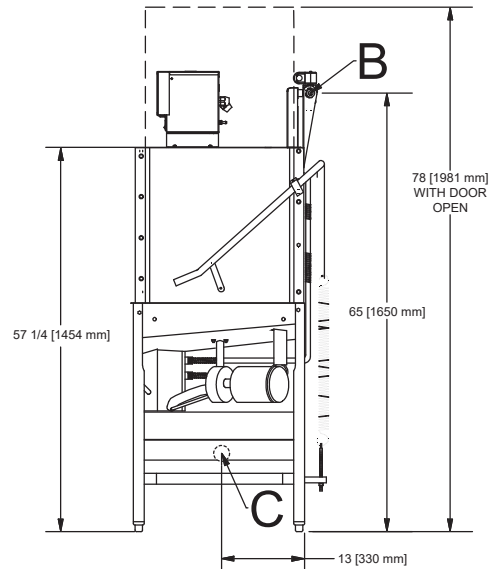
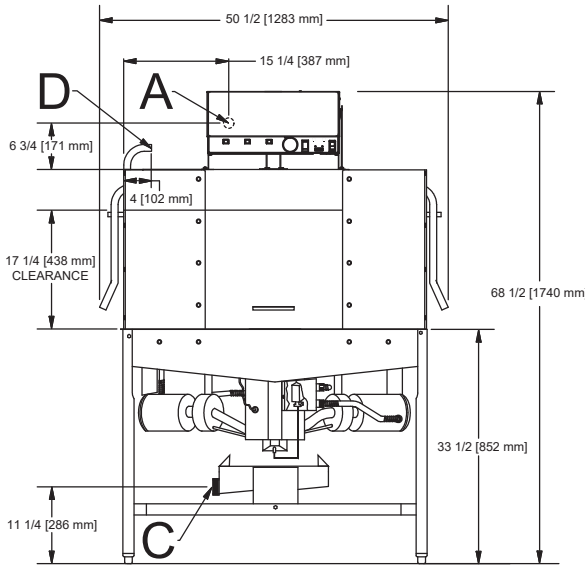




LEGEND

- A - Electrical Connection
- B - Water Inlet (3/4" NPT)
- C - Drain Connection (2" NPT)
- D - Chemical Connection

All dimensions from the floor can be increased 1 1/8" using the machine's adjustable feet.



| MODEL NO. | MACHINE DIMENSIONS | | | | DRAIN HEIGHT | SHIPPING INFORMATION | | | | | |
|----------------------|--------------------|-------------------|--------------------------|------------------|------------------|----------------------|-------|---------------|---------------|---------------|--------------|
| | HEIGHT | WIDTH | WIDTH BETWEEN DISHTABLES | DEPTH | | WEIGHT | CLASS | CUBE | HEIGHT | WIDTH | DEPTH |
| NOBLE II | 68-1/2" (1740 mm) | 50-1/2" (1283 mm) | 44" (1118 mm) | 29-1/4" (743 mm) | 11-1/4" (286 mm) | 360 lbs (164 kg) | 300 | 98.96 cu. ft. | 75" (1905 mm) | 60" (1524 mm) | 38" (966 mm) |
| NOBLE II-CMR, II-CML | 68-1/2" (1740 mm) | 48-1/2" (1232 mm) | 44" (1118 mm) | 29-1/4" (743 mm) | 11-1/4" (286 mm) | 360 lbs (164 kg) | 300 | 98.96 cu. ft. | 75" (1905 mm) | 60" (1524 mm) | 38" (966 mm) |

| DIMENSIONS | |
|-------------------------------|------------------|
| Wall Clearance (minimum) | 4" (102 mm) |
| Standard Table Height | 34" (864 mm) |
| Inside Clearance | 17-1/4" (438 mm) |
| Machine Height with Door Open | 78" (1981 mm) |

| WATER | |
|---------------------------------|---|
| Inlet Temperature | 120 °F min. (49 °C); 140 °F (60 °C) recommended |
| Gallons per Hour | 87.05 (329.52 L) |
| Gallons per Hour** | 82.80 (302.83 L) |
| Gallons per Rack | 1.06 gal (4.0 L) |
| Waterline Size IPS (minimum) | 3/4" |
| Drainline Size IPS (minimum) | 2" |
| Flow Pressure (PSI) | 20 ± 5 |
| Wash Tank Capacity | 3.1 gal (11.8 L) |
| Minimum Chlorine Required (PPM) | 50 |

| OPERATING CAPACITY | |
|--------------------|----------|
| Racks per Hour | 82 (78)* |
| Dishes per Hour | 2,050 |
| Glasses per Hour | 2,952 |

| OPERATING CYCLE (seconds) | Wash | Rinse | Dwell | Total Cycle |
|---------------------------|------|-------|-------|-------------|
| | 53 | 14 | 20 | 87 |

| ELECTRICAL | |
|----------------|----------|
| Power Supply | 115/60/1 |
| Total Amp Load | 20.0 A |

| OPERATING TEMPERATURES | |
|------------------------|---|
| Wash | 120 °F min. (49 °C); 140 °F (60 °C) recommended |
| Rinse | 120 °F min. (49 °C); 140 °F (60 °C) recommended |

| WASH PUMP MOTOR | |
|-----------------|------|
| Wash Pump | 1 HP |

HOW TO SPECIFY: NOBLE II, NOBLE II-CMR, NOBLE II-CML

*Racks per hour calculated with NSF suggested load time of five (5) seconds for door-type (straight thru)
 **Gallons per hour calculated with NSF suggested load time of five (5) seconds for door-type (straight thru)