



Project _____
 Item _____
 Quantity _____
 CSI Section 11400
 Approval _____
 Date _____

NOBLE I-E-LTH

NOBLE I-E-LTH



Standard Features

- Built-in booster heater ensures constant 145° F water to the unit for outstanding performance
- Electronic timer
- Three selectable cycles (Normal, Medium, Heavy)
- Internal sump design
- Built-in waste accumulator
- Delimer switch for easy removal of hard water deposits
- Removable scrap screen
- Air gap instead of vacuum breaker
- Door switch
- Convenient top mounted controls
- Auto start
- Interchangeable upper and lower stainless steel wash / rinse arms
- Wash thermometer
- Low chemical indicator lights
- Stainless steel adjustable bullet feet

Mandatory Specs

Specify voltage _____

Options

- Water Hammer Arrestor
- Scaltrol
- False Panel (for corner installations)
- Flanged Feet
- Front Dress Panel
- Audible Low Product Alarm
(available only on 115v models)

Accessories

- 36-Compartment Rack
 - 4-1/8" tall (105 mm)
 - 5-5/8" tall (143 mm)
 - 7" tall (178 mm)
- Combination Rack
- Peg Rack

Specifications

- Uses 1.02 gallons (3.9 liters) water per rack
- 41 (39)* racks per hour (Normal cycle)
- Single point electrical connection
- Self-draining stainless steel pump eliminates soil/detergent carryover between wash and rinse cycles
- Fill and Dump design disposes of dirty water, replacing it with a fresh water rinse every cycle
- Field convertible from straight to corner and vice versa for flexible installations and applications (kit required)
- 17-1/4" (438 mm) vertical inside clearance
- Built-in chemical pumps and priming switches
- Large removable scrap screen
- Durable stainless steel construction



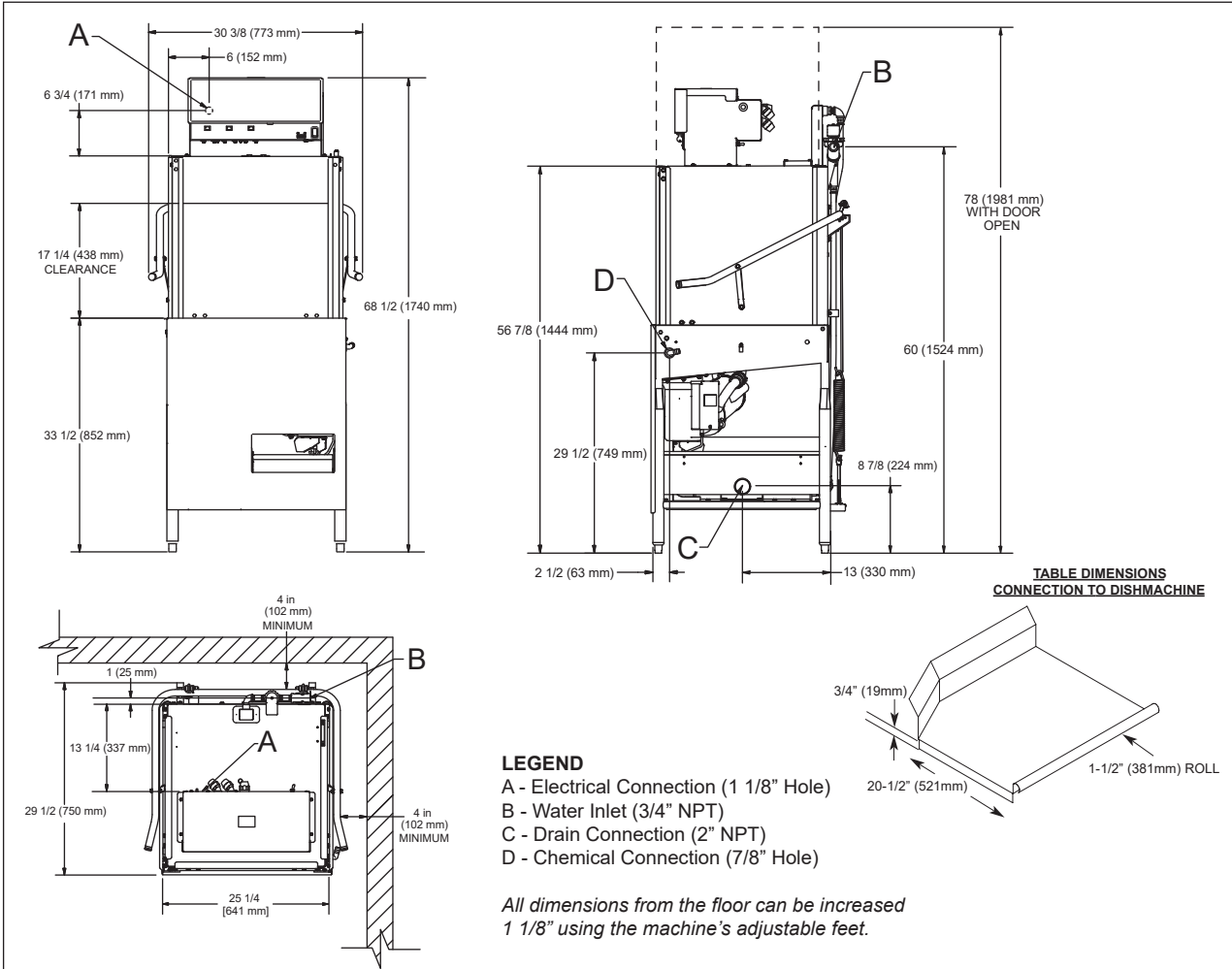
Intertek



Intertek



*Racks per hour calculated with NSF suggested load time of five (5) seconds for door-types (straight thru)



MODEL NO.	MACHINE DIMENSIONS				DRAIN HEIGHT	SHIPPING INFORMATION					
	HEIGHT	WIDTH	WIDTH BETWEEN DISHTABLES	DEPTH		WEIGHT	CLASS	CUBE	HEIGHT	WIDTH	DEPTH
NOBLE I-E-LTH	68-1/2" (1740 mm)	30-3/8" (772 mm)	25-1/4" (641 mm)	29-1/2" (749 mm)	9-3/4" (248 mm)	300 lbs (136 kg)	300	58.15 cu. ft.	72.5" (1842 mm)	33" (838 mm)	42" (1067 mm)

OPERATING CAPACITY				
Racks per Hour		Normal 41 (39)*	Medium 24 (24)*	Heavy 11 (10)*
OPERATING CYCLE (seconds)				
Wash		42	100	280
Rinse		25	25	25
Dwell		20	20	20
Total Cycle		87	145	325

WATER REQUIREMENTS		
	MINIMUM	RECOMMENDED
Inlet Temperature	110°F (44 °C)	120°F (49 °C)
Wash Operating Temperature	120°F (49 °C)	140°F (60 °C)
Rinse Operating Temperature	120°F (49 °C)	145°F (63 °C)
Gallons per Hour	41.82 gal (158.3 L)	
Gallons per Hour**	39.78 gal (150.6 L)	
Gallons per Rack	1.02 gal (3.86 L)	
Flow Pressure (PSI)	20 ± 5	
Waterline Size IPS (minimum)	3/4"	
Drainline Size IPS (minimum)	2"	
Minimum Chlorine Required (PPM)	50	

ELECTRICAL REQUIREMENTS			
Power Supply	Total Load	Minimum Circuit Ampacity	Maximum Overcurrent Protection
208/60/3	30.0 A	31.3 A	35 A
230/60/3	32.7 A	33.9 A	35 A
208/60/1	48.3 A	49.6 A	50 A
230/60/1	52.9 A	54.2 A	55 A

WASH PUMP MOTOR	
Wash Pump	1 HP

HOW TO SPECIFY: NOBLE I-E-LTH

*Racks per hour calculated with NSF suggested load time of five (5) seconds for door-type (straight thru)
 **Gallons per hour calculated with NSF suggested load time of five (5) seconds for door-type (straight thru)