

monterey

A chair that has evolved from sophisticated design, the Monterey is beautifully proportioned and extremely comfortable. A milestone in ergonomic seating, it not only conforms to individual body shapes and weights, but also to movement. The titanium frame and base make it built to last and designed to enhance any office space.

specifications

Overall Dimensions

27" x 27" x 40.5-43.3"
(W x D x H)

Seat

20" x 19.3" (W x D)

Back

20" x 23.6" (W x H)

Seat Height

18.5" (at lowest point)
21.3" (at highest point)

Weight

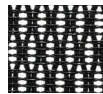
68.5 lbs

Cube

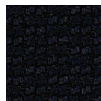
11.1

standard colors

black mesh
PM01



black fabric
5806



fabric seat

MFSY77

option

Headrest
HRAP99



features

Tilt Tension Control

Recline rate adapts to weight of user.

Tilt Lock

Locks out tilt function.

Synchro-Tilt

Back reclines in a preset ratio to seat.

Seat Height Adjustment

Sets seat height to desired position relative to floor.

Waterfall Seat

Front of cushion slopes to reduce pressure on the back of the knees.

Seat Depth Adjustment

Adjusts seat depth relative to back.

Width Adjustable Arms

Adjusts arms in or out for proper ergonomic positioning.

Arm Height Adjustment

Adjusts arm up or down for proper ergonomic positioning while seated.

Lumbar Adjustment

Black Titanium Frame and Base



fabrix | custom
upholstery

eurotech
a raynor group company

1.800.637.0005

email: customerservice@raynorgroup.com
catalog requests: literature@raynorgroup.com