

apollo II

specifications

Overall Dimensions
26.4" x 24.8" x 37.4-40.9"
(W x D x H)

Seat
21" x 20" (W x D)

Back
19.3" x 20.5" (W x H)

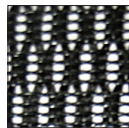
Seat Height
19.3" (at lowest point)
22.8" (at highest point)

Weight
58 lbs

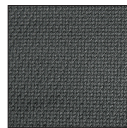
Cube
6:1

standard colors

**black mesh
PM01**



**black fabric
5806**



mid back
multi-function
w/seat slider

MFST5455

option

polished
steel base
S330C



features

Tilt Tension Control

Recline rate adapts to weight of user.

Center-Tilt

Chair tilts from a point under the center of the seat allowing user to rock back and forth. Tension adjustable.

Tilt Lock

Locks out tilt function.

Back Angle Adjustment

Sets back angle for personalized comfort in reclined position.

Seat Height Adjustment

Sets seat height to desired position relative to floor.

Seat Depth Adjustment

Adjusts seat depth relative to back.

Adjustable Lumbar Pad

Waterfall Seat

Front of cushion slopes to reduce pressure on the back of the knees.

Forward Seat Tilt

Changes angle of seat to enable proper ergonomic posture while using computer keyboard.

Width Adjustable Arms

Adjusts arms in or out for proper ergonomic positioning.

Arm Height Adjustment

Adjusts arm up or down for proper ergonomic positioning while seated.

Seat Angle Adjustment

Seat angle will lock in any position from front to back.

2.8" Ratchet Back Height Adjustment

Backrest easily adjusts up or down relative to seat for personalized lumbar region support and comfort.

eurotech
a raynor group company

fabrix | custom
upholstery

FABRIX 1

FABRIX 2

FABRIX 3

C.O.M. YARDAGE

1.00

1.800.637.0005

email: customerservice@raynorgroup.com

catalog requests: literature@raynorgroup.com

Contact us or visit web for available Fabrix colors and options.

©2015 Raynor Group. All Rights Reserved.