



Profit from the Eagle Advantage®

Specification Sheet

Short Form Specifications

Eagle Handwashing System, model _____. Constructed of type 304 stainless steel with deep-drawn positive drain sink bowl, basket drain, inverted "V" edge to prevent spillage, removable stainless steel trash container, and MICROGARD® antimicrobial protection. T&S electronic-eye faucet with hydro-generator power source, automated touchless paper towel dispenser, hands-free hand sanitizer dispenser, hands-free soap dispenser, glove rack and white bristle nail brush. Other systems available feature hand sink with skirt only (no waste receptacle) or hand sink with end splashes.



#HFL-5000 with towel dispenser, soap dispenser, hand sanitizing dispenser and glove rack

Item No.: _____
Project No.: _____
S.I.S. No.: _____

HFL-5000 Series Touch-Free Handwashing Systems

MODELS:

- ☐ HFL-5000
- ☐ HFL-5000-S
- ☐ HFL-5000-LRS

HFL-5000 Components:

- **Eagle** hand sink with MICROGARD® antimicrobial protection. Includes basket drain with 1½" connection.
- **Kimberly-Clark** touchless towel dispenser. Eagle part #377454. Use Kleenex #50606 or Scott #02000 towel roll.
- **T&S** electronic-eye faucet, splash mounted with battery-saving hydro-generator power source. A LEED-friendly combination with the flow of water creating its own power source. Eagle part #369865.
- **Purell/LTX** hand sanitizing dispenser. Eagle part #377455.
- **Gojo/LTX** hand soap dispenser. Eagle part #377456.
- **FoodHandler** glove rack for single service gloves. Model #11-0012. Eagle part #352855.
- **Tucel** soft bristle white nail brush. Model #1832. Eagle part #348602.

EAGLE GROUP

100 Industrial Boulevard, Clayton, DE 19938-8903 USA

Phone: 302-653-3000 • Fax: 302-653-2065

www.eaglegrp.com

Foodservice Division: Phone 800-441-8440

MHC/Retail Display Divisions: Phone 800-637-5100

For custom configuration or fabrication needs, contact our **SpecFAB®** Division.

Phone: 302-653-3000 • Fax: 302-653-2065 • e-mail: quotes@eaglegrp.com

Certifications / Approvals



(for Eagle hand sink)

AUTOQUOTES



EG20.55 Rev. 12/13

Spec sheets available for viewing, printing or downloading from our online literature library at www.eaglegrp.com

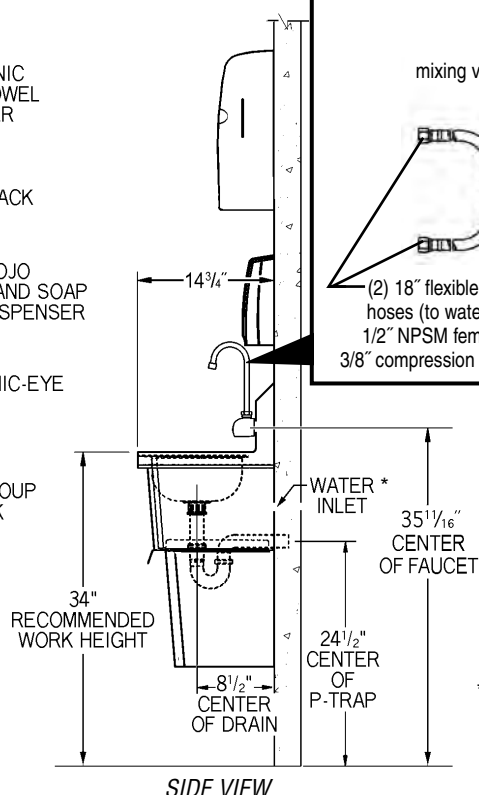
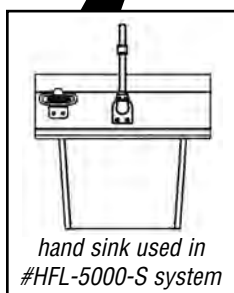
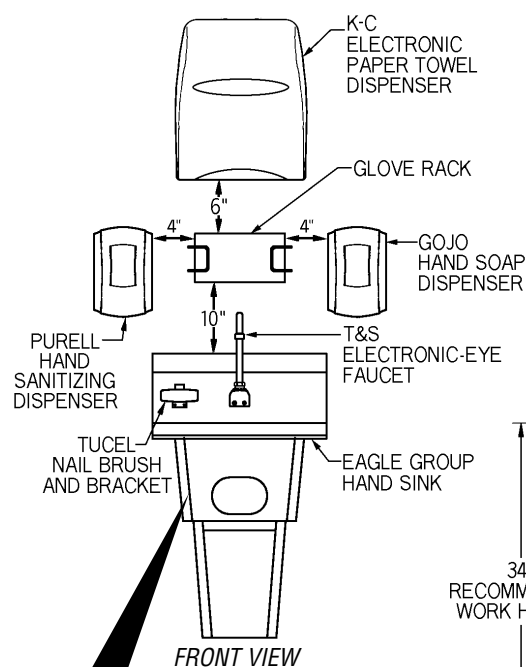
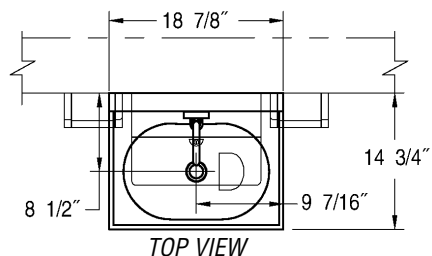
Eagle Foodservice Equipment, Eagle MHC, SpecFAB®, and Retail Display are divisions of Eagle Group. ©2013 by the Eagle Group



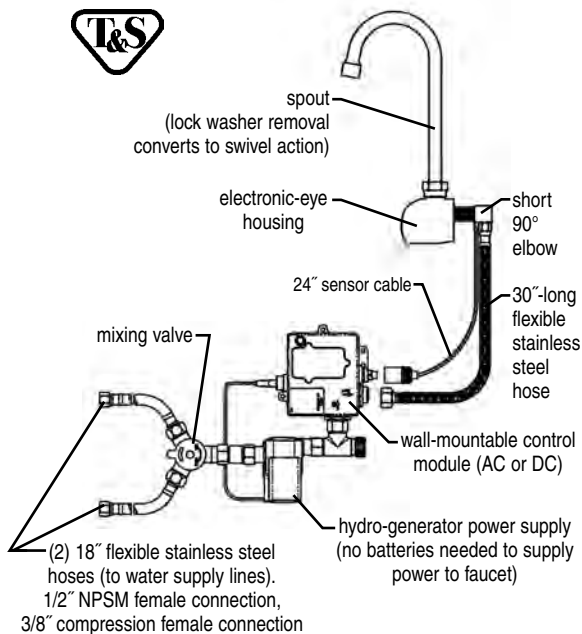
Profit from the Eagle Advantage®

Item No.: _____
Project No.: _____
S.I.S. No.: _____

HFL-5000 Series Touch-Free Handwashing Systems



Details of Electronic-Eye Faucet



* LOCATION OF WATER INLET ROUGH-IN RECOMMENDED TO BE WITHIN AREA OF SINK BODY, ABOVE P-TRAP

| model # | description of hand sink included |
|---------------------|--|
| HFL-5000 | hand sink with waste receptacle |
| HFL-5000-S | hand sink with skirt (no waste receptacle) |
| HFL-5000-LRS | hand sink with waste receptacle and end splashes |

NOTE: All hand sinks in HFL-5000 Series feature MICROGARD® antimicrobial protection.

EAGLE GROUP
100 Industrial Boulevard, Clayton, DE 19938-8903 USA
Phone: 302-653-3000 • Fax: 302-653-2065
www.eaglegrp.com

Foodservice Division: Phone 800-441-8440
MHC/Retail Display Divisions: Phone 800-637-5100

Spec sheets available for viewing, printing or downloading from our online literature library at www.eaglegrp.com

Although every attempt has been made to ensure the accuracy of the information provided, we cannot be held responsible for typographical or printing errors. Information and specifications are subject to change without notice. Please confirm at time of order.

Printed in U.S.A.
©2013 by Eagle Group
Rev. 12/13