

Fusion

Product Specifications

ITEM NO: _____
PROJECT: _____
DATE: _____

Combination Hot Service Above Refrigerated Self-Service Full Pan Capacity



MODEL SHOWN: GCD656H

NOTE: INTERIOR PANS NOT PROVIDED W/CASE - GCD456H HOLDS (3) 4" D FULL SIZE PANS
GCD656H = (5) PANS, GCD856H = (7) PANS

- ☐ GCD456H
- ☐ GCD656H
- ☐ GCD856H

Lengths include end panels
51"L x 51-7/8"D x 55-3/8"H
75-3/8"L x 51-7/8"D x 55-3/8"H
99-3/4"L x 51-7/8"D x 55-3/8"H

STANDARD FEATURES

- Breeze™ w/EnergyWise s/c refrigeration
- Compressor air intake from rear and out front panel at toe kick. Front panel cannot be blocked.
- Designed for dry heat
- Halogen bulbs
- Independently heated wells controlled by thermostat
- Integrated average product temperature of 160°F in hot section and 40°F or less in cold
- LED top light(s)
- Non-refrigerated rear storage (w/doors)
- One year parts & labor; 5 year compressor warranty
- Stainless steel rear exterior

Features	Standard	Options
EXTERIOR COLOR	<input type="checkbox"/> Laminated (non-premium) Confirm pattern/grain direction	<input type="checkbox"/> Laminated (premium) Confirm pattern/grain direction <input type="checkbox"/> Stainless steel
INTERIOR COLOR - LOWER	<input type="checkbox"/> Black	<input type="checkbox"/> Stainless steel <input type="checkbox"/> White
LOWER FRONT PANEL COLOR	<input type="checkbox"/> Painted - Black	<input type="checkbox"/> Stainless steel
TRIM COLOR	<input type="checkbox"/> Black	<input type="checkbox"/> Silver
BASE	<input type="checkbox"/> Casters w/ levelers (n/a w/ remote ref.)	<input type="checkbox"/> 6"H legs (n/a w/ remote ref.)
END PANEL LEFT	<input type="checkbox"/> Cutaway with glass	<input type="checkbox"/> No end panel (for same case to case connect)
END PANEL RIGHT	<input type="checkbox"/> Cutaway with glass	<input type="checkbox"/> No end panel (for same case to case connect)
FRONT GLASS	<input type="checkbox"/> Curved single pane, lift-up front glass w/o lock	<input type="checkbox"/> Flat angled single pane, lift-up front glass w/o lock
UPPER REAR	<input type="checkbox"/> Clear glass rear sliding doors w/o lock	<input type="checkbox"/> Reflective glass rear sliding doors w/o lock
REFRIGERATION	<input type="checkbox"/> Breeze™ w/EnergyWise s/c refrigeration	<input type="checkbox"/> NOTE: Remote only available w/rail base w/shims. N/A w/ levelers, casters or legs. <input type="checkbox"/> Note: Remote doesn't incl Conds unit. Floor drain reqd. <input type="checkbox"/> Remote w/thermostat, solenoid & TXV
MISCELLANEOUS		<input type="checkbox"/> Rear door lock <input type="checkbox"/> Scale stand w/receptacle (requires separate circuit) <input type="checkbox"/> Second year parts & labor warranty (excludes compressor)
ACCESSORIES		<input type="checkbox"/> Clean Sweep® coil cleaner (n/a w/remote) <input type="checkbox"/> Night curtain, retractable, non-locking <input type="checkbox"/> Rear wrapping board <input type="checkbox"/> ¹ Removable wire security cover, locking

Option Notes: 1 - Also locks upper front glass

Fusion

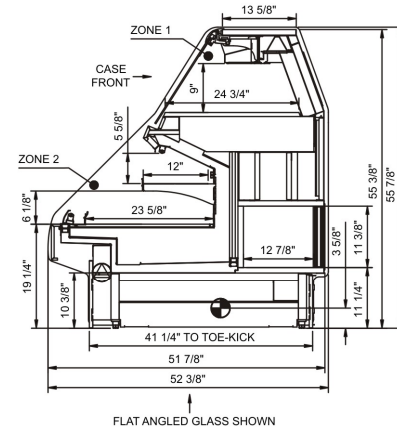
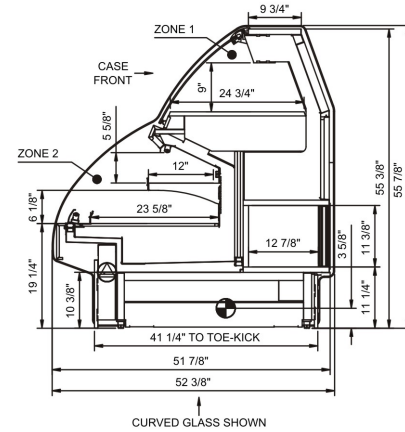
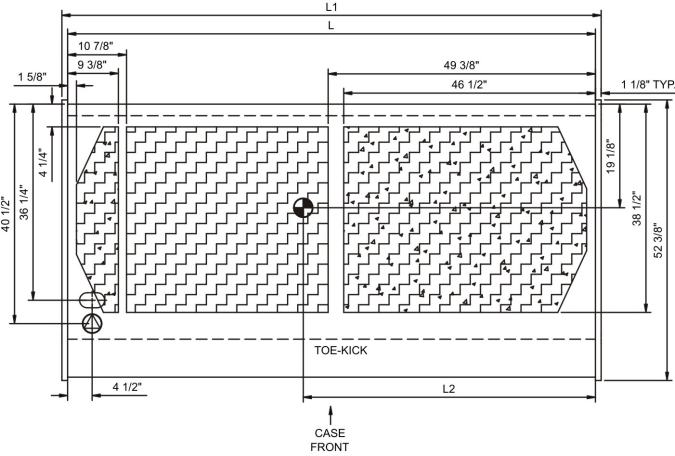
Product Specifications

Intended Environment: Type I - Designed to operate in ambient conditions of 75°F with 55% relative humidity unless noted otherwise in system information below.

Zone	Intended Product To Be Displayed	Integrated Prod Temp ° F
All	Packaged refrigerated products	40

PLAN VIEW

SIDE VIEW



NOTE: ALL DIMENSIONS APPROXIMATE

- ELECTRICAL JUNCTION BOX (SUPPLIED WITH 6\" LEADS OR POWER CORD).
- REMOTE FLOOR SINK & UTILITIES ACCESS AREA.
- LOCATION OF DRAIN TUBE FOR REMOTE REF. ONLY (SUPPLIED WITH 3/4\" OR 1 1/2\" PVC TUBE).
- SELF-CONTAINED CASE SERVICE ACCESS AREA.
- REFRIGERATION LINE CONNECTION.
- DRY CASE SERVICE ACCESS AREA.

Model Technical Specifications															
Model	L"	L1"	L2"	System Circuit Volts			Phs	Freq	Amps ***	Watts	Wires	NEMA Plug	SST	BTUH	Est Wt
GCD456H	N/A	51.00	.00	Heat	Circuit #2	208	1	50-60	7.33	1,555	2+G	Leads Single	N/A	N/A	1,000
						240	1	50-60	8.44	2,044	2+G	Leads Single	N/A	N/A	
						208	3	50-60	4.97	1,555	3+G	Leads Single	N/A	N/A	
						240	3	50-60	5.71	2,044	3+G	Leads Single	N/A	N/A	
				Remote(Type I)	Circuit #1	110-120	1	60	1.30	142	2+G	Leads Multiple	20.00	2500	
				Self-Contained	Circuit #1	208-240	1	60	8.11	1,438	2+G	Leads Single	N/A	N/A	
GCD656H	N/A	75.38	.00	Heat	Circuit #2	208	1	60	12.17	2,599	2+G	Leads Single	N/A	N/A	1,500
						240	1	60	14.02	3,413	2+G	Leads Single	N/A	N/A	
						208	3	60	9.81	2,599	3+G	Leads Single	N/A	N/A	
						240	3	60	11.29	3,413	3+G	Leads Single	N/A	N/A	
				Remote(Type I)	Circuit #1	110-120	1	60	2.03	210	2+G	Leads Multiple	20.00	5000	
				Self-Contained	Circuit #1	208-240	1	60	10.09	1,940	2+G	Leads Single	N/A	N/A	
GCD856H	N/A	99.75	54.00	Heat	Circuit #2	208	1	50-60	17.02	3,602	2+G	Leads Single	N/A	N/A	1,700
						240	1	50-60	19.61	4,742	2+G	Leads Single	N/A	N/A	
						208	3	50-60	12.30	3,602	3+G	Leads Single	N/A	N/A	
						240	3	50-60	14.15	4,742	3+G	Leads Single	N/A	N/A	
				Remote(Type I)	Circuit #1	110-120	1	60	2.41	255	2+G	Leads Multiple	20.00	5000	
				Self-Contained	Circuit #1	208-240	1	60	9.55	1,882	2+G	Leads Single	N/A	N/A	

*** Does not include electric defrost on freezer models.

Important Notes:

- 1) ELECTRICAL NOTE: If GFCI is required, a GFCI breaker MUST be used in lieu of a GFCI receptacle
- 2) 54" minimum door entry clearance required (without shipping skid).
- 3) Units are supplied with levelers. They must be adjusted during installation to ensure the unit is level and plumb. Dimensions reflect levelers extended 1 1/4".

Regulatory Approvals:

All Models	<p>Accordance with AHRI Std 1200</p> <p>UL/cUL Listed Std 197 & Std 471</p> <p>ETL Listed to CAN/CSA 22.2 No. 109 & 120</p> <p>ETL Sanitation to NSF 4 & 7</p>
------------	--



In Accordance with
AHRI Std 1200

DOE 2017
Energy Efficiency
Compliant

888 E. Porter Rd.
Muskegon, MI 49441
Ph. 231-798-8888
Fx. 231-798-4960
www.structuralconcepts.com

Note: Information is subject to change at any time.
Visit www.structuralconcepts.com for the most current specs.

Revised 12/6/2016

20029880

