

specifications

Overall Dimensions

26" x 25" x 37.5-41"
(W x D x H)

Seat

20" x 19" (W x D)

Back

18.5" x 19.5" (W x H)

Seat Height

19.3" (at lowest point)
22.8" (at highest point)

Weight

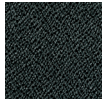
60 lbs

Cube

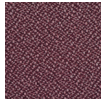
5.4

standard colors

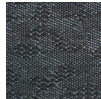
black fabric
AT33



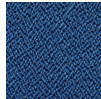
burgundy fabric
AT31



charcoal fabric
H5511



navy fabric
AT30



FT4547



features

Tilt Tension Control

Recline rate adapts to weight of user.

Center-Tilt

Chair tilts from a point under the center of the seat allowing user to rock back and forth. Tension adjustable.

Tilt Lock

Locks out tilt function.

Seat Height Adjustment

Sets seat height to desired position relative to floor.

Waterfall Seat

Front of cushion slopes to reduce pressure on the back of the knees.

Width Adjustable Arms

Adjusts arms in or out for proper ergonomic positioning.

Arm Height Adjustment

Adjusts arm up or down for proper ergonomic positioning while seated.

2.8" Ratchet Back Height Adjustment

Backrest easily adjusts up or down relative to seat for personalized lumbar region support and comfort.

Shell Back



eurotech
a raynor group company

fabrix | custom upholstery

C.O.M. YARDAGE
1.80

1.800.637.0005

email: customerservice@raynorgroup.com
catalog requests: literature@raynorgroup.com