

# fuzion

## BASIC

Offering a cutting-edge workspace design, the Fuzion will never compromise comfort during an 8-hour day. The seat moves with you, as you move, providing both freedom of movement and continuous support.

### specifications

**Overall Dimensions**

26" x 27.5" x 46-51"  
(W x D x H)

**Seat**

20.5" x 19" (W x D)

**Back**

20.5" x 33" (W x H)

**Seat Height**

18.3" (at lowest point)  
23" (at highest point)

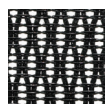
**Weight**

66 lbs

**Cube**

9.9

### standard colors

**black mesh W09-1**

### high-back

FUZ6B-HI



### features

**Tilt Tension Control**

Recline rate adapts to weight of user.

**Tilt Lock**

Locks out tilt function.

**Back Angle Adjustment**

Sets back angle for personalized comfort in reclined position.

**Synchro-Tilt**

Back reclines in a preset ratio to seat.

**Seat Height Adjustment**

Sets seat height to desired position relative to floor.

**Waterfall Seat**

Front of cushion slopes to reduce pressure on the back of the knees.

**Arm Height Adjustment**

Adjusts arm up or down for proper ergonomic positioning while seated.



**eurotech**  
a raynor group company

**1.800.637.0005**

email: [customerservice@raynorgroup.com](mailto:customerservice@raynorgroup.com)  
catalog requests: [literature@raynorgroup.com](mailto:literature@raynorgroup.com)

# fuzion

## BASIC

Offering a cutting-edge workspace design, the Fuzion will never compromise comfort during an 8-hour day. The seat moves with you, as you move, providing both freedom of movement and continuous support.

### specifications

**Overall Dimensions**

26" x 27.5" x 40-46"  
(W x D x H)

**Seat**

20.5" x 19" (W x D)

**Back**

20.5" x 24.5" (W x H)

**Seat Height**

18.3" (at lowest point)  
23" (at highest point)

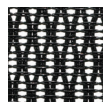
**Weight**

63 lbs

**Cube**

9.3

### standard colors

**black mesh W09-1**

mid-back  
FUZ5B-LO



### features

**Tilt Tension Control**

Recline rate adapts to weight of user.

**Tilt Lock**

Locks out tilt function.

**Back Angle Adjustment**

Sets back angle for personalized comfort in reclined position.

**Synchro-Tilt**

Back reclines in a preset ratio to seat.

**Seat Height Adjustment**

Sets seat height to desired position relative to floor.

**Waterfall Seat**

Front of cushion slopes to reduce pressure on the back of the knees.

**Arm Height Adjustment**

Adjusts arm up or down for proper ergonomic positioning while seated.



**eurotech**  
a raynor group company

**1.800.637.0005**

email: [customerservice@raynorgroup.com](mailto:customerservice@raynorgroup.com)  
catalog requests: [literature@raynorgroup.com](mailto:literature@raynorgroup.com)