

All of our Ergo chairs were engineered with your total comfort in mind. Aesthetics, form and function are merged seamlessly in a single design, allowing Ergo chairs to be minutely adjusted to achieve unrivaled support. A synchro-tilt mechanism with infinite lock, sliding seat, pneumatic height adjustment, and headrest, are standard on all Ergo models. Add a choice of mesh, leather, or a selection from our Fabrix catalog, and you can build the perfect Ergo chair for you.

specifications

Overall Dimensions

26.5" x 29" x 46-52"
(W x D x H)

Seat

20.5" x 18.5" (W x D)

Back

20.5" x 28" (W x H)

Seat Height

18.1" (at lowest point)
22.9" (at highest point)

Weight

66 lbs

Cube

10.8



high-back

ME7ERG



features

Tilt Tension Control

Recline rate adapts to weight of user.

Tilt Lock

Locks out tilt function.

Back Angle Adjustment

Sets back angle for personalized comfort in reclined position.

Synchro-Tilt

Back reclines in a preset ratio to seat.

Seat Height Adjustment

Sets seat height to desired position relative to floor.

Waterfall Seat

Front of cushion slopes to reduce pressure on the back of the knees.

Back Height Adjustment

Raise or lower to support the lumbar (lower back) region.

Seat Depth Adjustment

Adjusts seat depth relative to back.

Arm Height Adjustment

Adjusts arm up or down for proper ergonomic positioning while seated.

Swivel Arm

Arm pads angle in or out for proper ergonomic positioning.

Arm Depth Adjustment

Arm pads slide forward or backward for proper ergonomic positioning.

Single Lever Adjustment

Adjustable Headrest

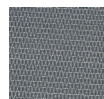
eurotech
a raynor group company

standard colors

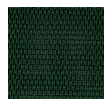
blue mesh
KM15



grey mesh
W09-53



green mesh
KM14



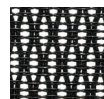
plum red
mesh KM12



orange/
copper
mesh KM13



black mesh
W09-1



1.800.637.0005

email: customerservice@raynorgroup.com
catalog requests: literature@raynorgroup.com

All of our Ergo chairs were engineered with your total comfort in mind. Aesthetics, form and function are merged seamlessly in a single design, allowing Ergo chairs to be minutely adjusted to achieve unrivaled support. A synchro-tilt mechanism with infinite lock, sliding seat, pneumatic height adjustment, and headrest, are standard on all Ergo models. Add a choice of mesh, leather, or a selection from our Fabrix catalog, and you can build the perfect Ergo chair for you.

specifications

Overall Dimensions

26.5" x 29" x 46-52"
(W x D x H)

Seat

20.5" x 18.5" (W x D)

Back

20.5" x 28" (W x H)

Seat Height

18.1" (at lowest point)
22.9" (at highest point)

Weight

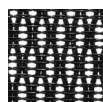
66 lbs

Cube

10.8

standard colors

black mesh W09-1



high-back
CAL133
CAME7ERG



features

Tilt Tension Control

Recline rate adapts to weight of user.

Tilt Lock

Locks out tilt function.

Back Angle Adjustment

Sets back angle for personalized comfort in reclined position.

Synchro-Tilt

Back reclines in a preset ratio to seat.

Seat Height Adjustment

Sets seat height to desired position relative to floor.

Waterfall Seat

Front of cushion slopes to reduce pressure on the back of the knees.

Back Height Adjustment

Raise or lower to support the lumbar (lower back) region.

Seat Depth Adjustment

Adjusts seat depth relative to back.

Arm Height Adjustment

Adjusts arm up or down for proper ergonomic positioning while seated.

Swivel Arm

Arm pads angle in or out for proper ergonomic positioning.

Arm Depth Adjustment

Arm pads slide forward or backward for proper ergonomic positioning.

Single Lever Adjustment

Adjustable Headrest

tilt tension control

The tilt tension knob allows for easy adjustment of back recline resistance. Back angle can be locked in five positions (four different positions of recline or upright).



eurotech
a raynor group company

1.800.637.0005

email: customerservice@raynorgroup.com
catalog requests: literature@raynorgroup.com

All of our Ergo chairs were engineered with your total comfort in mind. Aesthetics, form and function are merged seamlessly in a single design, allowing Ergo chairs to be minutely adjusted to achieve unrivaled support. A synchro-tilt mechanism with infinite lock, sliding seat, pneumatic height adjustment, and headrest, are standard on all Ergo models. Add a choice of mesh, leather, or a selection from our Fabrix catalog, and you can build the perfect Ergo chair for you.

specifications

Overall Dimensions

26.5" x 29" x 39.5-45.5"
(W x D x H)

Seat

20.5" x 18.5" (W x D)

Back

20.5" x 22" (W x H)

Seat Height

18.1" (at lowest point)
22.9" (at highest point)

Weight

64 lbs

Cube

9.2



mid-back
ME8ERGLO



features

Tilt Tension Control

Recline rate adapts to weight of user.

Tilt Lock

Locks out tilt function.

Back Angle Adjustment

Sets back angle for personalized comfort in reclined position.

Synchro-Tilt

Back reclines in a preset ratio to seat.

Seat Height Adjustment

Sets seat height to desired position relative to floor.

Waterfall Seat

Front of cushion slopes to reduce pressure on the back of the knees.

Back Height Adjustment

Raise or lower to support the lumbar (lower back) region.

Seat Depth Adjustment

Adjusts seat depth relative to back.

Arm Height Adjustment

Adjusts arm up or down for proper ergonomic positioning while seated.

Swivel Arm

Arm pads angle in or out for proper ergonomic positioning.

Arm Depth Adjustment

Arm pads slide forward or backward for proper ergonomic positioning.

Single Lever Adjustment

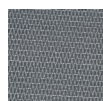
eurotech
a raynor group company

standard colors

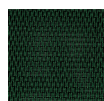
blue mesh
KM15



grey mesh
W09-53



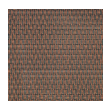
green mesh
KM14



plum red
mesh KM12



orange/
copper
mesh KM13



black mesh
W09-1



1.800.637.0005

email: customerservice@raynorgroup.com
catalog requests: literature@raynorgroup.com

All of our Ergo chairs were engineered with your total comfort in mind. Aesthetics, form and function are merged seamlessly in a single design, allowing Ergo chairs to be minutely adjusted to achieve unrivaled support. A synchro-tilt mechanism with infinite lock, sliding seat, pneumatic height adjustment, and headrest, are standard on all Ergo models. Add a choice of mesh, leather, or a selection from our Fabrix catalog, and you can build the perfect Ergo chair for you.

specifications

Overall Dimensions

26.5" x 29" x 39.5-45.5"
(W x D x H)

Seat

20.5" x 18.5" (W x D)

Back

20.5" x 22" (W x H)

Seat Height

18.1" (at lowest point)
22.9" (at highest point)

Weight

64 lbs

Cube

9.2

standard colors

black mesh W09-1



mid-back
CAL133
CAME8ERGLO



features

Tilt Tension Control

Recline rate adapts to weight of user.

Tilt Lock

Locks out tilt function.

Back Angle Adjustment

Sets back angle for personalized comfort in reclined position.

Synchro-Tilt

Back reclines in a preset ratio to seat.

Seat Height Adjustment

Sets seat height to desired position relative to floor.

Waterfall Seat

Front of cushion slopes to reduce pressure on the back of the knees.

Back Height Adjustment

Raise or lower to support the lumbar (lower back) region.

Seat Depth Adjustment

Adjusts seat depth relative to back.

Arm Height Adjustment

Adjusts arm up or down for proper ergonomic positioning while seated.

Swivel Arm

Arm pads angle in or out for proper ergonomic positioning.

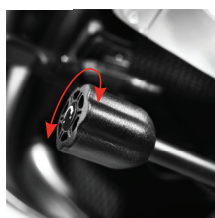
Arm Depth Adjustment

Arm pads slide forward or backward for proper ergonomic positioning.

Single Lever Adjustment

tilt tension control

The tilt tension knob allows for easy adjustment of back recline resistance. Back angle can be locked in five positions (four different positions of recline or upright).



eurotech
a raynor group company

1.800.637.0005

email: customerservice@raynorgroup.com
catalog requests: literature@raynorgroup.com