

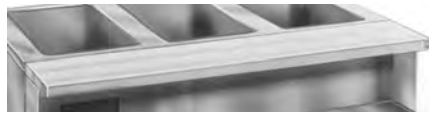


Profit from the Eagle Advantage®

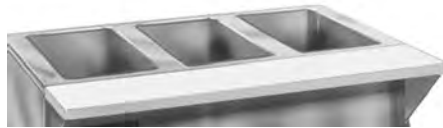
Specification Sheet



thermoplastic cutting board replacement



hardwood cutting board



Richlite® heat-resistant cutting board



buffet shelf

Richlite® Heat-Resistant Cutting Boards

- 8" (203mm) wide, 1/2" (13mm) thick.
- High heat-resistant up to 360°F.
- 18 gauge stainless steel mounting brackets.

model #	for model	length		weight	
		in.	mm	lbs.	kg
RLB-2	HT2	33"	838	14	6.3
RLB-3	HT3	48"	1219	18	8.2
RLB-4	HT4	63½"	1613	21	9.5
RLB-5	HT5	79"	2007	24	10.9
RLB-6	HT6	94½"	2400	31	14.1

Buffet Shelves

- 15" (381mm)-wide, 18 gauge stainless steel shelf located 20" (508mm) above surface.
- Offered with clear polycarbonate sneeze guard on one or both sides, with or without infrared bullet lamps.

...with Sneeze Guard on One Side... 25½" (651mm) overall front-to-back						...with Sneeze Guard on Both Sides... 36¼" (921mm) overall front-to-back					
...without infrared bullet lamps			...with infrared bullet lamps			...without infrared bullet lamps			...with infrared bullet lamps		
length		weight	model #	length		weight	model #	length		weight	model #
in.	mm	lbs. kg		in.	mm	lbs. kg		in.	mm	lbs. kg	
33"	838	27 12.2	BS1-HT2	33"	838	14 6.3	WB-HT2	33"	838	14 6.3	BS2-HT2
48"	1219	38 17.2	BS1-HT3	48"	1219	18 8.2	WB-HT3	48"	1219	18 8.2	BS2-HT3
63½"	1613	58 26.3	BS1-HT4	63½"	1613	21 9.5	WB-HT4	63½"	1613	21 9.5	BS2-HT4
79"	2007	83 37.6	BS1-HT5	79"	2007	24 10.9	WB-HT5	79"	2007	24 10.9	BS2-HT5
94½"	2400	104 47.2	BS1-HT6	94½"	2400	31 14.1	WB-HT6	94½"	2400	31 14.1	BS2-HT6

EAGLE GROUP

100 Industrial Boulevard, Clayton, DE 19938-8903 USA

Phone: 302-653-3000 • Fax: 302-653-2065

www.eaglegrp.com

Foodservice Division: Phone 800-441-8440

MHC/Retail Display Divisions: Phone 800-637-5100

For custom configuration or fabrication needs, contact our SpecFAB® Division.

Phone: 302-653-3000 • Fax: 302-653-2065 • e-mail: quotes@eaglegrp.com

AUTOQUOTES



EG30.20A Rev. 09/15

Spec sheets available for viewing, printing or downloading from our online literature library at www.eaglegrp.com

Eagle Foodservice Equipment, Eagle MHC, SpecFAB®, and Retail Display are divisions of Eagle Group. ©2015 by the Eagle Group

Item No.: _____
 Project No.: _____
 S.I.S. No.: _____

Hot Food Table Accessories— Cutting Boards, Shelves

MODELS:

- | | | | |
|---------------------------------|---------------------------------|--------------------------------|----------------------------------|
| <input type="checkbox"/> 353996 | <input type="checkbox"/> 353985 | <input type="checkbox"/> WB-* | <input type="checkbox"/> SSP-* |
| <input type="checkbox"/> 353997 | <input type="checkbox"/> 353986 | <input type="checkbox"/> RLB-* | <input type="checkbox"/> DSSP-* |
| <input type="checkbox"/> 353998 | <input type="checkbox"/> 353987 | <input type="checkbox"/> TS-* | <input type="checkbox"/> BS1-HT* |
| <input type="checkbox"/> 353999 | <input type="checkbox"/> 353988 | <input type="checkbox"/> TSL-* | <input type="checkbox"/> BS2-HT* |
| <input type="checkbox"/> 354066 | <input type="checkbox"/> 355196 | <input type="checkbox"/> SS-* | |

* See charts for full model numbers.

Thermoplastic Cutting Board Replacements

- 8" (203mm) wide, 1/2" (13mm) thick.
- Polyethylene material.

model #	for model	length		weight	
		in.	mm	lbs.	kg
353996	HT2	33"	838	12	5.4
353997	HT3	48"	1219	17	7.7
353998	HT4	63½"	1613	23	10.4
353999	HT5	79"	2007	30	13.6
354066	HT6	94½"	2400	37	16.8

Hardwood Cutting Boards

- 8" (203mm) wide, 1/4" (32mm) thick.
- Laminated hardwood cutting board.
- Available on stationary stainless steel or chrome-plated drop brackets.

with Stationary Brackets		with Drop Brackets		length		weight	
model #	for model	model #	for model	in.	mm	lbs.	kg
WB-HT2	HT2	WB-DB-HT2	HT2	33"	838	14	6.3
WB-HT3	HT3	WB-DB-HT3	HT3	48"	1219	18	8.2
WB-HT4	HT4	WB-DB-HT4	HT4	63½"	1613	21	9.5
WB-HT5	HT5	WB-DB-HT5	HT5	79"	2007	24	10.9
WB-HT6	HT6	WB-DB-HT6	HT6	94½"	2400	31	14.1



Profit from the Eagle Advantage®

Item No.: _____
 Project No.: _____
 S.I.S. No.: _____

Hot Food Table Accessories



servicing shelf

Serving Shelves

- 18 gauge stainless steel serving shelf.
- Serving height is 13½" (343mm).
- ¼" (6mm) clear Acrylite® front panel or open front available.

...with Open Front		...with Acrylite® Front Panel		length		weight	
10" (254mm) wide	model #	18" (457mm) wide	model #	in.	mm	lbs.	kg
	SS-HT2		SSP-HT2	33"	838	20	9.0
	SS-HT3		SSP-HT3	48"	1219	25	11.3
	SS-HT4		SSP-HT4	63½"	1613	35	15.9
	SS-HT5		SSP-HT5	79"	2007	40	18.1
	SS-HT6		SSP-HT6	94½"	2400	55	24.9

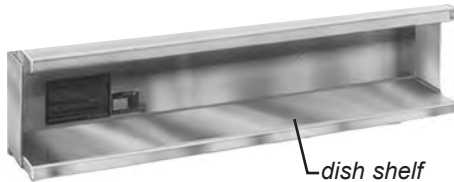


deluxe serving shelf

Deluxe Serving Shelves

- 14½" (368mm)-wide, 18 gauge stainless steel serving shelf.
- Front sloped back to allow better view of product.
- Stainless steel end panel assemblies.
- ¼" (6mm) clear Acrylite® at front and ends.

model #	for model	length		weight	
		in.	mm	lbs.	kg
DSSP-HT2	HT2	33"	838	27	12.2
DSSP-HT3	HT3	48"	1219	37	16.8
DSSP-HT4	HT4	63½"	1613	47	21.3
DSSP-HT5	HT5	79"	2007	55	24.9
DSSP-HT6	HT6	94½"	2400	69	31.3

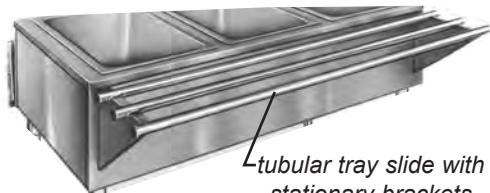


dish shelf

Dish Shelves

- 8" (203mm)-wide, 1¼" (32mm)-thick shelf.
- 18 gauge stainless steel construction.
- Removable without the use of tools.

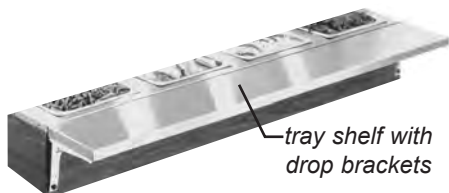
model #	for model	length		weight	
		in.	mm	lbs.	kg
353985	HT2	33"	838	6	2.7
353986	HT3	48"	1219	7	3.2
353987	HT4	63½"	1613	11	5.0
353988	HT5	79"	2007	14	6.4
355196	HT6	94½"	2400	20	9.0



tubular tray slide with stationary brackets

Tray Slides / Shelves

- Stainless steel stationary brackets or chrome-plated drop brackets.
- Suitable for field mounting.



tray shelf with drop brackets

				Tubular Tray Slides		Solid Tray Shelves	
				10½" (267mm)-wide, three tube-type stainless steel		10" (254mm)-wide, stainless steel shelf.	
length		weight		w/Stationary Brackets	w/Drop Brackets	w/Stationary Brackets	w/Drop Brackets
in.	mm	lbs.	kg	model #	model #	model #	model #
33"	838	14	6.3	TSL-HT2	TSL-DB-HT2	TS-HT2	TS-DB-HT2
48"	1219	18	8.2	TSL-HT3	TSL-DB-HT3	TS-HT3	TS-DB-HT3
63½"	1613	21	9.5	TSL-HT4	TSL-DB-HT4	TS-HT4	TS-DB-HT4
79"	2007	24	10.9	TSL-HT5	TSL-DB-HT5	TS-HT5	TS-DB-HT5
94½"	2400	31	14.1	TSL-HT6	TSL-DB-HT6	TS-HT6	TS-DB-HT6

EAGLE GROUP

100 Industrial Boulevard, Clayton, DE 19938-8903 USA

Phone: 302-653-3000 • Fax: 302-653-2065 • www.eaglegrp.com

Foodservice Division: Phone 800-441-8440

MHC/Retail Display Divisions: Phone 800-637-5100

Printed in U.S.A.
 ©2015 by Eagle Group

Rev. 09/15

Spec sheets available for viewing, printing or downloading from our online literature library at www.eaglegrp.com

Although every attempt has been made to ensure the accuracy of the information provided, we cannot be held responsible for typographical or printing errors. Information and specifications are subject to change without notice. Please confirm at time of order.