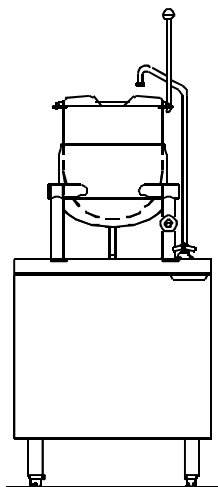




CB24D-K

One Direct Steam Kettle
on a 24" Cabinet Base



OPTIONS AND ACCESSORIES (AT ADDITIONAL CHARGE)

- Etched kettle markings
 - ☐ Gallon markings
 - ☐ Litre marking
- ☐ Correctional package
- ☐ Pressure reducing valve
- ☐ One piece stainless steel lift off cover
- ☐ Lift-out perforated stainless steel basket
- ☐ Graduated measuring strip
- ☐ Ball float trap
- ☐ Pour lip strainer
- ☐ One year extended warranty

Project _____

Item No. _____

Quantity _____

- ☐ Model CB24D-6K (one 6 gallon direct steam kettle on a 24" cabinet base)
- ☐ Model CB24D-10K (one 10 gallon direct steam kettle on a 24" cabinet base)

KETTLES

- Water resistant, 304 stainless steel construction
- 316 stainless steel interior cooking surface for corrosion resistance
- 2/3 jacketed, hemispherical design on bottom for superior heat circulation
- Tilt mechanism permits kettle to tilt forward past 90° to empty
- Tubular stainless steel legs containing steam control valve and condensate return pipes
- Reversible operating handle with heat proof knob

CABINET BASE

- Steam supply manifold with safety relief valve
- Condensate return manifold with steam trap
- Hot and cold water faucet with control valves
- 3" (76 mm) deep sink with drain
- Splash guard
- #4 finish stainless steel
- Removable side panels
- Hinged door with magnetic latch
- 6" (152 mm) stainless steel legs
- Adjustable bullet feet on the front
- Flanged adjustable feet on the rear for securing to the floor

STANDARD FEATURES

- Startup inspection service by factory authorized service agent
- One year parts and labor warranty*

* For all international markets, contact your local distributor

CB24D-K CABINET BASE WITH KETTLE



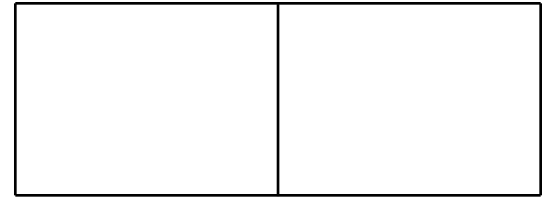
BLODGETT

www.blodgett.com

44 Lakeside Avenue, Burlington, VT 05401 • Phone: (802) 658-6600 • Fax: (802) 864-0183



CB24D-K



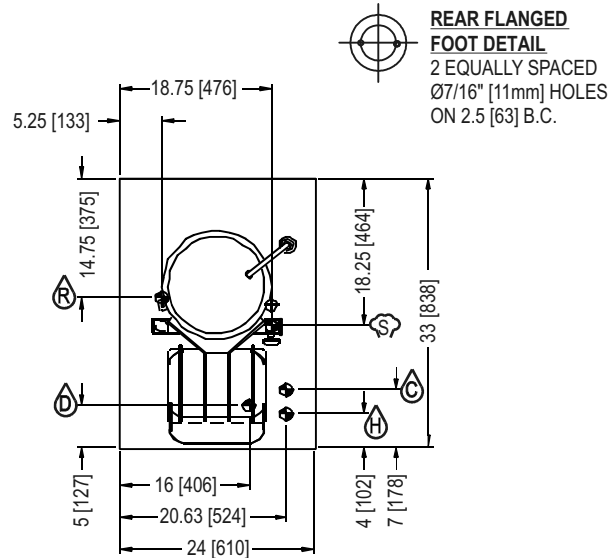
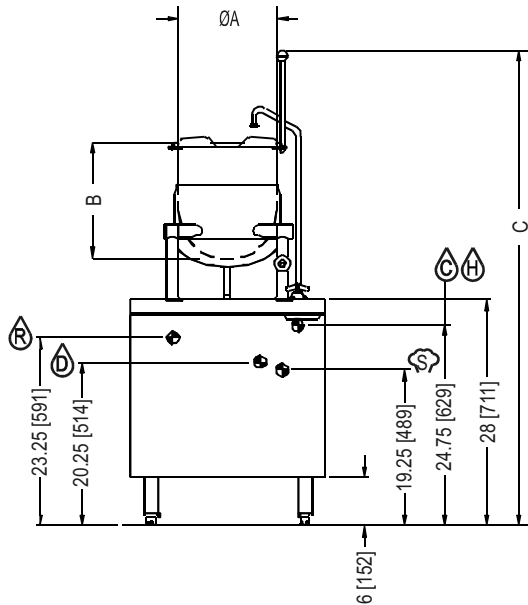
APPROVAL/STAMP

DIMENSIONS

MODEL	CAPACITY	UNITS	A	B	C
CB24D-6K	6 gallons 23 litres	inches mm	12 305	14.5 368	58.75 1492
CB24D-10K	10 gallons 38 litres	inches mm	16 406	15 381	57.75 1467

DIMENSIONS ARE IN INCHES [MM]

NOTE: SPLASH GUARD NOT SHOWN ON FRONT VIEW



REAR FLANGED

FOOT DETAIL

2 EQUALLY SPACED
Ø7/16" [11mm] HOLES
ON 2.5 [63] B.C.

STEAM SUPPLY: 3/4" IPS for incoming steam at 5-50 PSI (35-345 kPa). Pressure reducing valve is required if incoming pressure exceeds 50 PSI (345 kPa).

COLD AND HOT WATER: 3/8" O.D. tubing for cold water to faucet to fill kettle.

DRAIN: 1-1/8" O.D. tubing.

CONDENSATE RETURN: 1/2" IPS.

SHORT FORM SPECIFICATIONS

Provide Blodgett model CB24D-6K, one 6 gallon direct steam kettle on a 24" wide cabinet base, or CB24D-10K, one 10 gallon direct steam kettle on a 24" cabinet base.

The kettle shall have a double wall interior to form a steam jacket around the lower 2/3 of the kettle. The bottom of the kettle shall be of hemispherical design for superior heat circulation. Steam control valve mounted in leg. The tubular stainless steel mounting legs shall have the steam supply and condensate return pipes completely concealed within the leg members. The sealed stainless steel tilt mechanism bearings shall permit the kettle to tilt forward 90° for complete emptying. A removeable operating handle with heat proof knob shall be mounted on the left or right. Unit shall have a single support leg with nylon insert. Construction shall be all welded satin finish 304 stainless steel with a 316 stainless steel liner.

The cabinet base shall be #4 finish stainless steel with removable side panels, hinged door with magnetic latch and 6" (152 mm) stainless steel legs with adjustable bullet feet on the front and flanged adjustable feet on the rear for securing to the floor. Unit shall have steam supply manifold with safety relief valve and condensate return manifold with steam trap. Unit shall have a hot and cold water faucet with control valves, 3" (76 mm) deep sink with drain and splash guard.

Kettles shall be ASME code stamped and National Board registered. Provide options and accessories as indicated.

SHIPPING INFORMATION:

Approx. Weight:

CB24D-6k 225 lbs. (102 kg)
CB24D-10K 245 lbs. (111 kg)

DIRECT STEAM REQUIREMENTS:

Direct steam at a minimum of 5 psi (34 kPa) and a maximum of 45 psi (310 kPa) 1/4 BHP required per kettle.

NOTE: The company reserves the right to make substitutions of components without prior notice.

BLODGETT

www.blodgett.com

44 Lakeside Avenue, Burlington, VT 05401 • Phone: (802) 658-6600 • Fax: (802) 864-0183