



BEVERAGE-AIR

| | |
|-----------------|------------|
| Project: _____ | AIA# _____ |
| Item: _____ | |
| Location: _____ | SIS# _____ |
| Approved: _____ | |

BB BAR EQUIPMENT - BACK BAR REFRIGERATOR

BB68HC Glass Door Wine Model
Hydrocarbon Series

MODEL:
BB68HC-1-G-B-Wine
BB68HC-1-G-S-Wine



BB68HC-1-G-B-Wine

3 Year Parts/Labor Warranty
Additional 2 Year Compressor Warranty

CABINET CONSTRUCTION

- Black or stainless steel exterior
- Interior construction utilizes galvanized steel on walls and ceiling, heavy duty stainless steel floor
- Full electronic control
- Stainless steel top
- Two (2) epoxy coated shelves per section, standard
- Self-closing doors
- Stay-open feature & lock standard
- Magnetic door gaskets provide positive door sealing
- LED lighting
- Field reversible doors
- Balanced, forced air refrigeration system provides rapid chilling of product
- Maintains wine temperatures between 40°F to 60°F for storage of red or white wines

OPTIONS & ACCESSORIES

- ☐ 3"-6" casters or 6" legs
- ☐ Food rated models available
- ☐ Solid door models available
- ☐ Foot pedal door opener

REFRIGERATION SYSTEM

- Refrigeration system uses R290 refrigerant to comply with all environmental concerns
- Automatic, non-electric evaporator
- Epoxy coated evaporator coil

BB68HC Back Bar Refrigerators: Glass Door Wine Model



3779 Champion Blvd., Winston-Salem, NC 27105
1-888-845-9800 Fax: 1-336-245-6453
Beverage-Air.com sales@bevair.com



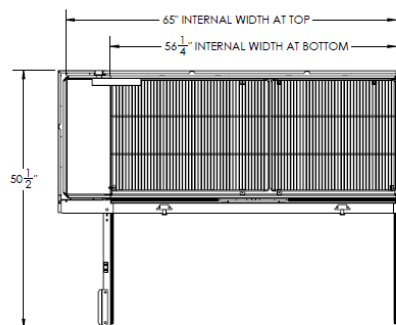
BEVERAGE-AIR

Bar Equipment-Back Bar Refrigerator Glass Door Wine Model

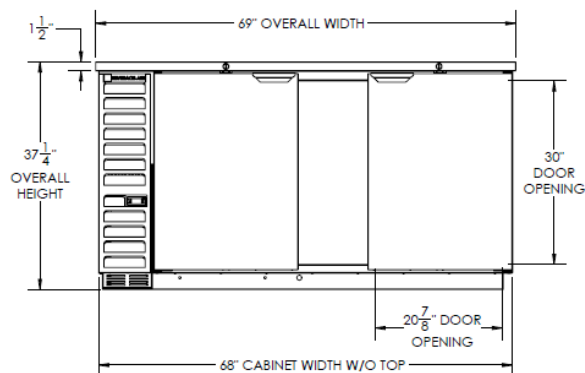
Model: BB68HC-1-G-B-Wine, BB68HC-1-G-S-Wine

| MODEL | BB68HC-1-G-B-Wine | BB68HC-1-G-S-Wine |
|----------------------------------|-------------------|-------------------|
| EXTERNAL DIMENSIONAL DATA | | |
| Width Overall | 69" | 69" |
| Depth Overall with Handles | 29 1/8" | 29 1/8" |
| Height Overall | 37 1/4" | 37 1/4" |
| Number of Doors | 2 | 2 |
| Depth with Door Open 90° | 50 1/2" | 50 1/2" |
| Door Opening (in) | 20 7/8" x 30" | 20 7/8" x 30" |
| Shelf Area (sq. in) | 704" | 704" |
| INTERNAL DIMENSIONAL DATA | | |
| NET Capacity (cubic ft.) | 25.93 | 25.93 |
| Internal Width Overall (in) | 56 1/4" | 56 1/4" |
| Internal Depth Overall (in) | 23" | 23" |
| Internal Height Overall (in) | 32" | 32" |
| Number of Shelves | 4 | 4 |
| Number of Kegs | 3 | 3 |
| ELECTRICAL DATA | | |
| Full Load Amperes 115/60/1 | 5.3 | 5.3 |
| REFRIGERATION DATA | | |
| Horsepower | 1/3 | 1/3 |
| Capacity (BTU/Hr)* | 2392 | 2392 |
| WEIGHT DATA | | |
| Gross Weight (Crated lbs) | 401 lbs | 401 lbs |
| Height - Crated | 41 1/4" | 41 1/4" |
| Width - Crated | 72" | 72" |
| Depth - Crated | 31 1/4" | 31 1/4" |

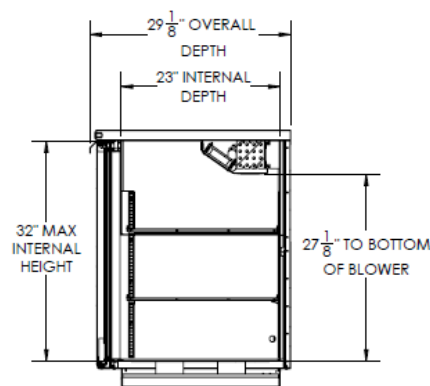
Model Views



Plan View



Elevation View



Side View

ELECTRICAL CONNECTION



115/60/1
NEMA-5-15P

Units pre-wired at
factory and include 8'
long cord and plug set.

