

330 SERIES



- **Type 1A Straight Ladder**
300 lbs. capacity

- **Solid Aluminum Rivet Construction**

Solid aluminum rivet construction at critical stress points is stronger than tubular steel rivets and results in a longer service life for your ladder.

- **Direct Rung-To-Rail Design**

Our high-profile, slip-resistant D-shaped rungs are mounted through the side rails for a tight and sturdy direct connection.

- **Two-way Suction Cup/Spike Shoe**

The shoe attachments on the 315 are reinforced with castings and heavy gauge aluminum reinforcement sleeves to provide a stronger connection point for our suction cup/spike shoes.

- **Acrylic End Caps**

Bauer's cast acrylic end caps provide protection to side rail ends, are impact resistant, and won't mark surfaces like aluminum end caps do.

- **Aluminum End Caps**

Cast aluminum end caps are featured on the 33018, 33020 and 33024 models.



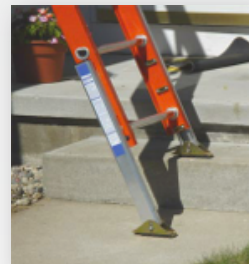
Part #	Size	Highest Standing Level	Bottom Width	Approximate Weight	Approximate Cube
33008	8'	4'9"	17 1/8"	19 lbs.	3.5
33010	10'	6'9"	17 1/8"	23 lbs.	4.2
33012	12'	8'9"	17 1/8"	26 lbs.	5.0
33014	14'	10'9"	17 1/8"	30 lbs.	5.9
33016	16'	12'9"	17 1/8"	33 lbs.	6.7
33018*	18'	14'9"	19 1/4"	54 lbs.	9.6
33020*	20'	16'9"	19 1/4"	60 lbs.	10.3
33024*	24'	20'9"	19 1/4"	66 lbs.	15.2

*Riveted Rung-to-Rail Design

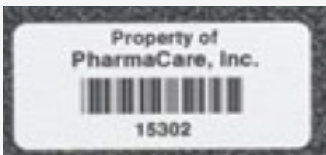
Standard Features	Bauer 330	Werner D6200-1	Louisville N/A
Type IA 300 lb. Rated	✓	✓	
Non-conductive Side Rails	✓	✓	
Solid Aluminum Rivet Construction	✓		
Direct Rung-to-Rail Design	✓	✓	
High Profile D Rung	✓	✓	
Non-marring End Caps	✓	✓	
2-way Spike/Suction Cup Shoes	✓	✓	
Aluminum Reinforcement Sleeves	✓	✓	
Zinc-plated Steel Hardware	✓		
Safety Yellow Side Rails	✓	✓	

ADD ON OPTIONS:**PROTECTIVE RAIL SLEEVE**

Ladder racks are a ladders worst enemy! Bauer has designed a protective rail guard that absorbs the abrasion and vibration that is harmful to ladders. Your ladders will last longer!

AUTOMATIC LEG LEVELERS

Unlike our competition our auto levelers have been tested, approved, and are labeled as a 375 lbs capacity. So when installed on a Type 1AA, 375 lbs rated ladder the ladder rating is maintained.

ASSET MANAGEMENT TAGS

Serial number ID systems to effectively track inspections and repairs as well as the length of time a ladder has been in service.

POLY COATING

Bauer is the only manufacture to offer poly coating to provide added protection from harmful UV rays.

**SUPERIOR SERVICE!**

Bauer manufactures ladders strictly for cable and utility companies, not the home centers! We stock what you order and ship quick. Standard lead times are 2-3 days, not weeks! We ship quick and typically damage free! Bauer over-packages our shipments, decreasing the likelihood of aggravating freight claims.



1505 E Bowman Street
Wooster, Ohio 44691

Tel: 800-321-4760
Fax: 800-419-5598
E-mail: sales@ladder.com
Web: www.bauerladder.com

