

# 315 SERIES



## • Type 1AA Extension Ladder

375 lbs. capacity

### • Solid Aluminum Rivet Construction

Solid aluminum rivet construction at critical stress points is stronger than tubular steel rivets and results in a longer service life for your ladder.

### • Two-way Suction Cup/Spike Shoe

The shoe attachments on the 315 are reinforced with castings and heavy gauge aluminum reinforcement sleeves to provide a stronger connection point for our suction cup/spike shoes.

### • Center-Point Labeling

A target label designates the center-point for the weight of the ladder so the user knows where to grab the ladder to transport it safely: promoting safe handling/lifting techniques.

### • Safety Red Rungs

Highest standing level is clearly defined and has never been easier to determine. It's easy don't stand on red!

### • Internal & External Rail Guides

Internal and external rail guides provide added safety and ease of use over competitive models with only external rail guides.

### • Upgraded Rope Is Standard

3/8" diameter rope poly-plus rope with wear indicator. Durable rope that is also much easier on the user's hands.



Part #	Size	Extended Length	Highest Standing Level	Bottom Width	Approximate Weight	Approximate Cube
31516	16'	13"	9'6"	17 3/4"	42 lbs.	6.5
31520	20'	17"	13'6"	17 3/4"	51 lbs.	8.0
31524	24'	21"	17'6"	17 3/4"	60 lbs.	9.6
31528	28'	25"	21'6"	17 3/4"	68 lbs.	11.2
31532	32'	29"	25'6"	17 3/4"	77 lbs.	12.8
31536*	36'	32"	28'6"	18 7/8"	107 lbs.	19.2
31540*	40'	35"	31'6"	18 7/8"	116 lbs.	21.3

\*ANSI Type IA 300 lb. Rated

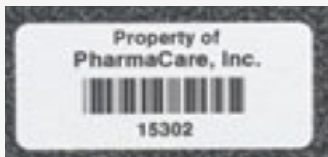
Standard Features	Bauer 315	Werner D7500	Louisville FE4200
Type IA 375 lb. Rated	✓	✓	✓
Non-conductive Side Rails	✓	✓	✓
Solid Aluminum Rivet Construction	✓		
Interlocking Side Rail Design	✓	✓	✓
Riveted Rung-to-Rail Design	✓	✓	✓
High Profile D Rung	✓	✓	✓
Cast Aluminum Rung Locks	✓	✓	✓
Upgraded Rope & Pulley System	✓		
Zinc-plated Steel Hardware	✓		
Non-marring End Caps	✓	✓	✓
2-way Spike/Suction Cup Shoes	✓	✓	✓
Aluminum Reinforcement Sleeves	✓	✓	✓
Internal and External Rail Guides	✓	✓	✓
Center-Point Label	✓		
Safety Red Rungs	✓		

**ADD ON OPTIONS:****PROTECTIVE RAIL SLEEVE**

Ladder racks are a ladders worst enemy! Bauer has designed a protective rail guard that absorbs the abrasion and vibration that is harmful to ladders. Your ladders will last longer!

**AUTOMATIC LEG LEVELERS**

Unlike our competition our auto levelers have been tested, approved, and are labeled as a 375 lbs capacity. So when installed on a Type 1AA, 375 lbs rated ladder the ladder rating is maintained.

**ASSET MANAGEMENT TAGS**

Serial number ID systems to effectively track inspections and repairs as well as the length of time a ladder has been in service.

**POLY COATING**

Bauer is the only manufacture to offer poly coating to provide added protection from harmful UV rays.

**SUPERIOR SERVICE!**

Bauer manufactures ladders strictly for cable and utility companies, not the home centers! We stock what you need and ship quick.

Standard lead times are 2-3 days, not weeks! And almost as important, we typically ship damage free! Bauer over-packages our shipments, decreasing the likelihood of aggravating freight claims.



2540 Progress Drive  
Wooster, Ohio 44691

Tel: 800-321-4760  
Fax: 800-419-5598  
E-mail: [sales@ladder.com](mailto:sales@ladder.com)  
Web: [www.bauerladder.com](http://www.bauerladder.com)

