

# 354 SERIES



## • Type 1A 2-Way Step Ladder

300 lbs. capacity

### • Solid Aluminum Rivet Construction

Solid aluminum rivet construction at critical stress points is stronger than tubular steel rivets and results in a longer service life for your ladder.

### • Bauer Boot Shoes

Our innovative Boot Shoes provide complete side rail protection and greater surface contact for increased slip resistance over competitive models.

### • Pinch-Resistant Internal Spreaders

Heavy duty, pinch-resistant spreaders are mounted internally to prevent damage during transport.

### • Formed, Zinc-plated Steel Braces

Formed, zinc-plated steel braces under every step means less corrosion and a longer service life for your ladder.

### • Molded Top Cap

The uniquely design in our Molded Top Cap holds tools, fasteners and other small impact resistance.

### • More Gentle Climbing Angle

A 20° climbing angle reduces worker fatigue and is more comfortable to climb than our competition's ladder.



Part #	Size	Highest Standing Level	Bottom Width	Approx. Spread	Approximate Weight	Approximate Cube
35400	2'	23"	17 <sup>3</sup> / <sub>8</sub> "	21 <sup>3</sup> / <sub>8</sub> "	12 lbs.	2.5
35404	4'	2'0"	20 <sup>1</sup> / <sub>2</sub> "	40"	23 lbs.	4.3
35405	5'	2'9"	22"	48 <sup>1</sup> / <sub>2</sub> "	27 lbs.	5.8
35406	6'	3'9"	23 <sup>1</sup> / <sub>2</sub> "	53 <sup>3</sup> / <sub>4</sub> "	31 lbs.	7.2
35407	7'	4'9"	25"	62 <sup>1</sup> / <sub>4</sub> "	36 lbs.	9.3
35408	8'	5'9"	26 <sup>1</sup> / <sub>2</sub> "	70 <sup>1</sup> / <sub>2</sub> "	40 lbs.	13.1
35410	10'	7'6"	29 <sup>1</sup> / <sub>2</sub> "	89 <sup>3</sup> / <sub>4</sub> "	52 lbs.	20.1
35412	12'	9'6"	32 <sup>1</sup> / <sub>2</sub> "	105 <sup>3</sup> / <sub>4</sub> "	63 lbs.	25.5

<b>Standard Features</b>	<b>Bauer 354</b>	Werner T6200	Louisville FM1500
Type IA 300 lb. Rated	✓	✓	✓
Non-conductive Side Rails	✓	✓	✓
Solid Aluminum Rivet Construction	✓		
Copolymer Molded Top Cap	✓	✓	
20° Climbing Angle	✓		
Boot Shoe Design	✓		✓
Heavy-duty Pinch Resistant Internal Spreaders	✓	✓	✓
Steel Reinforcement Plates	✓		
Formed Steel Double-Support Design Under Bottom Step	✓		✓
Formed Steel Supports Under Top Step	✓		
Zinc-plated Steel Hardware	✓	✓	
Safety Orange Side Rails	✓		

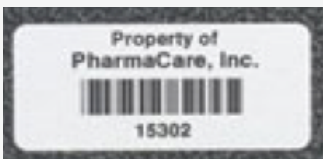
**ADD ON OPTIONS:**

**FIBERMARK LOGO RAIL IMPRINTING**



Get your company's logo imprinted into the fiberglass side rail. The logo can not be removed- this is a proven method of deterring equipment theft and increasing your company's exposure.

**ASSET MANAGEMENT TAGS**



Serial number ID systems to effectively track inspections and repairs as well as the length of time a ladder has been in service.

**SUPERIOR SERVICE!**



Bauer manufactures ladders strictly for professional users, not the home centers! We stock what you order and ship quick. Standard lead times are 2-3 days, not weeks! We ship quick and typically damage free! Bauer over-packages our shipments, decreasing the likelihood of aggravating freight claims.



1505 E Bowman Street  
Wooster, Ohio 44691

Tel: 800-321-4760  
Fax: 800-419-5598  
E-mail: [sales@ladder.com](mailto:sales@ladder.com)  
Web: [www.bauerladder.com](http://www.bauerladder.com)

