

# 350 SERIES



- **Type 1AA Step Ladder**

375 lbs. capacity

- **Solid Aluminum Rivet Construction**

Solid aluminum rivet construction at critical stress points is stronger than tubular steel rivets and results in a longer service life for your ladder.

- **Bauer Boot Shoes**

Our innovative Boot Shoes provide complete side rail protection and greater surface contact for increased slip resistance over competitive models.

- **Reinforcement Sleeves**

Reinforcement sleeves at spreader mount points provide superior strength and durability

- **Formed, Zinc-plated Steel Braces**

Formed, zinc-plated steel braces under every step means less corrosion and a longer service life for your ladder.

- **Molded Top Cap**

The uniquely design in our Molded Top Cap holds tools, fasteners and other small impact resistance.

- **More Gentle Climbing Angle**

A 20° climbing angle reduces worker fatigue and is more comfortable to climb than our competition's ladder.



Part #	Size	Highest Standing Level	Bottom Width	Approx. Spread	Approximate Weight	Approximate Cube
35002*	2'	23"	18"	24"	11 lbs.	1.4
35003	3'	1'0"	17 3/4"	26 1/2"	15 lbs.	2.1
35004	4'	2'0"	19 1/4"	34 1/2"	18 lbs.	3.0
35005	5'	2'9"	20 3/4"	42"	21 lbs.	4.1
35006	6'	3'9"	22 1/4"	49 1/2"	25 lbs.	5.2
35007	7'	4'9"	23 3/4"	58 1/2"	30 lbs.	6.4
35008	8'	5'9"	25 1/4"	68 1/4"	33 lbs.	7.8
35010	10'	7'6"	28 1/4"	77 1/4"	43 lbs.	10.9
35012	12'	9'6"	31 1/4"	92 3/4"	52 lbs.	14.0
35014*	14'	11'6"	34 1/4"	107"	68 lbs.	25.5
35016*	16'	13'6"	37 1/4"	122"	77 lbs.	31.7

\*ANSI type IA 300 lb. Rated

<b>Standard Features</b>	<b>Bauer 350</b>	Werner P7400	Louisville FS1100HD
Type IAA 375 lb. Rated	✓	✓	✓
Non-conductive Side Rails	✓	✓	✓
Solid Aluminum Rivet Construction	✓		
Copolymer Molded Top Cap	✓		✓
20° Climbing Angle	✓		
Boot Shoe Design	✓		
Rail Reinforcement Sleeves	✓	✓	✓
Heavy-duty Pinch Resistant Internal Spreaders	✓		✓
Full Compliment of Back Cross Braces with Formed Steel Supports	✓		✓
Steel Reinforcement Plates	✓		
Formed Steel Double-Support Design Under Bottom Step	✓		✓
Formed Steel Supports Under Every Step	✓		✓
Zinc-plated Steel Hardware	✓		
Safety Yellow Side Rails	✓		✓

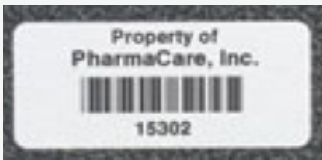
**ADD ON OPTIONS:**

**FIBERMARK LOGO RAIL IMPRINTING**



Get your company's logo imprinted into the fiberglass side rail. The logo can not be removed- this is a proven method of deterring equipment theft and increasing your company's exposure.

**ASSET MANAGEMENT TAGS**



Serial number ID systems to effectively track inspections and repairs as well as the length of time a ladder has been in service.

**SUPERIOR SERVICE!**



Bauer manufactures ladders strictly for professional users, not the home centers! We stock what you need and ship quick. Standard lead times are 2-3 days, not weeks! And almost as important, we typically ship damage free! Bauer over-packages our shipments, decreasing the likelihood of aggravating freight claims.



2540 Progress Drive  
Wooster, Ohio 44691

Tel: 800-321-4760  
Fax: 800-419-5598  
E-mail: [sales@ladder.com](mailto:sales@ladder.com)  
Web: [www.bauerladder.com](http://www.bauerladder.com)

