

310 SERIES



- **Type 1A Extension Ladder**
300 lbs. capacity

- **Direct Rung-To-Rail Design**

Our high-profile, slip-resistant D-shaped rungs are mounted through the side rails for a tight and sturdy direct connection.

- **Two-way Suction Cup/Spike Shoe**

The shoe attachments on the 310 are reinforced with castings and heavy gauge aluminum reinforcement sleeves to provide a stronger connection point for our suction cup/spike shoes.

- **Aluminum Die Cast Locks**

Double rung aluminum die cast locks with urethane safety flippers provide safe and secure latch points.

- **Upgraded rope**

We don't use the yellow or black, slippery rope our competitor's use. Bauer's standard rope is larger in diameter and softer, easier on the user's hands.

- **Internal & External Rail Guides**

Internal and external rail guides provide added safety and ease of use.

- **Red rungs**

The rungs the user should not stand on are red in color. The proper highest standing level has never been easier to determine: it's easy, don't stand on red!

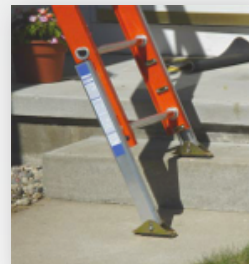


Part #	Size	Extended Length	Highest Standing Level	Bottom Width	Approximate Weight	Approximate Cube
31016	16'	13'	9'6"	17 1/4"	37 lbs.	6.5
31020	20'	17'	13'6"	17 1/4"	47 lbs.	8.0
31024	24'	21'	17'6"	17 1/4"	56 lbs.	9.6
31028	28'	25'	21'6"	17 1/4"	64 lbs.	11.2
31032	32'	29'	25'6"	17 1/4"	70 lbs.	12.8

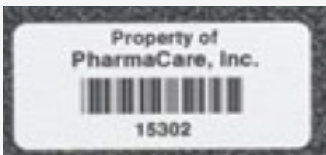
Standard Features	Bauer 310	Werner D6200	Louisville FE3200
Type IA 300 lb. Rated	✓	✓	✓
Non-conductive Side Rails	✓	✓	✓
Solid Aluminum Rivet Construction	✓		
Interlocking Side Rail Design	✓	✓	✓
Direct Rung-to-Rail Design	✓	✓	✓
High Profile 'D' Shaped Rung	✓	✓	✓
Cast Aluminum Rung Locks	✓	✓	✓
Internal Rail Guides	✓	✓	✓
External Rail Guides	✓	✓	✓
Non-marring End Caps	✓	✓	✓
2-way Spike/Suction Cup Shoes	✓	✓	✓
Aluminum Reinforcement Sleeves	✓	✓	✓
Standard Rope & Pulley System	✓	✓	✓
Zinc Plated Steel Hardware	✓		
Red Rungs Designating Highest Standing Level	✓		

ADD ON OPTIONS:**PROTECTIVE RAIL SLEEVE**

Ladder racks are a ladders worst enemy! Bauer has designed a protective rail guard that absorbs the abrasion and vibration that is harmful to ladders. Your ladders will last longer!

AUTOMATIC LEG LEVELERS

Unlike our competition our auto levelers have been tested, approved, and are labeled as a 375 lbs capacity. So when installed on a Type 1AA, 375 lbs rated ladder the ladder rating is maintained.

ASSET MANAGEMENT TAGS

Serial number ID systems to effectively track inspections and repairs as well as the length of time a ladder has been in service.

POLY COATING

Bauer is the only manufacture to offer poly coating to provide added protection from harmful UV rays.

**SUPERIOR SERVICE!**

Bauer manufactures ladders strictly for cable and utility companies, not the home centers! We stock what you need and ship quick. Standard lead times are 2-3 days, not weeks! Almost as important we typically ship damage free! Bauer over-packages our shipments, decreasing the likelihood of aggravating freight claims.



2540 Progress Drive
Wooster, Ohio 44691

Tel: 800-321-4760
Fax: 800-419-5598
E-mail: sales@ladder.com
Web: www.bauerladder.com

