

### Refrigerated Self-Service Case 24"D



MODEL SHOWN: B32

- ☐ B32
- ☐ B42
- ☐ B62
- ☐ B82

**Lengths include end panels**  
34-1/2"L x 24-1/4"D x 82-3/8"H  
45-1/2"L x 24-1/4"D x 82-3/8"H  
66-3/8"L x 24-1/4"D x 82-3/8"H  
88-3/8"L x 24-1/4"D x 82-3/8"H

#### STANDARD FEATURES

- Breeze™ w/EnergyWise s/c refrigeration
- Blue Fin coated coil
- Compressor air lower front intake and upper front discharge.  
Front panel cannot be blocked
- Condensate pan (self-contained refig. only)
- Flat header
- Integrated average product temperature of 40°F or less
- LED 4000K top light(s)
- One piece formed ABS plastic tub (n/a B82)
- One year parts & labor; 5 year compressor warranty
- Removable deck pans provide complete access to evaporator coil & refrigeration connections
- Shelving removable and adjustable on 1" centers
- Solid back panel, black

Features	Standard	Options
EXTERIOR COLOR	<input type="checkbox"/> Laminated (non-premium) Confirm pattern/grain direction	<input type="checkbox"/> Laminated (premium) Confirm pattern/grain direction <input type="checkbox"/> Stainless steel (includes lower front panel)
INTERIOR COLOR	<input type="checkbox"/> Black	<input type="checkbox"/> Stainless steel
LWR PERFORATED FRNT PANEL	<input type="checkbox"/> Painted - Black	<input type="checkbox"/> Stainless steel (w/stainless ext. only)
BASE	<input type="checkbox"/> Casters w/ levelers (n/a w/ remote ref.)	<input type="checkbox"/> Levelers (only) <input type="checkbox"/> Seismic levelers (Q4695)
END PANEL LEFT	<input type="checkbox"/> Full end panel w/mirror interior (metal edge matches interior color)	<input type="checkbox"/> Cutaway end panel (vinyl edge matches interior color) <input type="checkbox"/> No end panel w/ synchronized defrost
END PANEL RIGHT	<input type="checkbox"/> Full end panel w/mirror interior (metal edge matches interior color)	<input type="checkbox"/> Cutaway end panel (vinyl edge matches interior color) <input type="checkbox"/> No end panel w/ synchronized defrost
UPPER FRONT PANEL	<input type="checkbox"/> Flat front panel	<input type="checkbox"/> Black slatwall
SHELVING	<input type="checkbox"/> Metal shelves, non-lighted	<input type="checkbox"/> Metal shelves, lighted (LED 4000K)
ELECTRICAL CONNECT	<input type="checkbox"/> 6' power cord (base exit)	<input type="checkbox"/> 6' power cord (top exit)
REFRIGERATION	<input type="checkbox"/> Breeze™ w/EnergyWise s/c refrigeration (B82 remote only)	<input checked="" type="checkbox"/> Breeze™ w/ EnergyWise s/c refrigeration (w/ floor drain) (B82 remote only) <input type="checkbox"/> Note: Remote doesn't incl Conds unit. Floor drain reqd. <input type="checkbox"/> Remote w/thermostat, solenoid & TXV
MISCELLANEOUS		<input type="checkbox"/> Second year parts & labor warranty (excludes compressor)
ACCESSORIES		<input type="checkbox"/> Clean Sweep® coil cleaner (n/a w/remote) <input type="checkbox"/> Night curtain, retractable, non-locking <input type="checkbox"/> Price tag molding (matches interior color) <input type="checkbox"/> Solid security cover, removable, locking

**Option Notes:** 1 - \*n/a B82

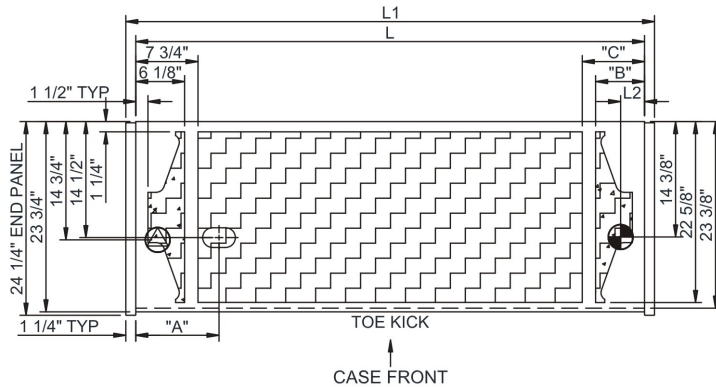
## Product Specifications

Zone	Intended Product To Be Displayed
------	----------------------------------

Warmest Avg Prod Temp ° F	
1	100
2	100
3	100
4	100
5	100
6	100
7	100
8	100
9	100
10	100
11	100
12	100
13	100
14	100
15	100
16	100
17	100
18	100
19	100
20	100
21	100
22	100
23	100
24	100
25	100
26	100
27	100
28	100
29	100
30	100
31	100
32	100
33	100
34	100
35	100
36	100
37	100
38	100
39	100
40	100
41	100
42	100
43	100
44	100
45	100
46	100
47	100
48	100
49	100
50	100
51	100
52	100
53	100
54	100
55	100
56	100
57	100
58	100
59	100
60	100
61	100
62	100
63	100
64	100
65	100
66	100
67	100
68	100
69	100
70	100
71	100
72	100
73	100
74	100
75	100
76	100
77	100
78	100
79	100
80	100
81	100
82	100
83	100
84	100
85	100
86	100
87	100
88	100
89	100
90	100
91	100
92	100
93	100
94	100
95	100
96	100
97	100
98	100
99	100
100	100

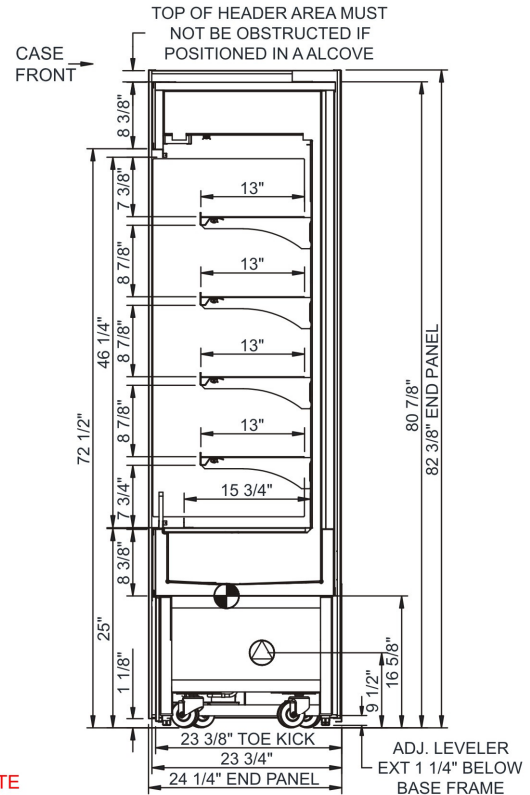
40

PLAN VIEW



	"A"	"B"	"C"
B32	7"	N/A	5 5/8"
B42	7"	6 1/8"	7 3/4"
B62	10 3/8"	6 1/8"	7 3/4"
B82	19 3/8"	17 1/2"	19 1/4"

SIDE VIEW



NOTE: ALL DIMENSIONS APPROXIMATE



**ELECTRICAL JUNCTION BOX  
(SUPPLIED WITH 6" LEADS OR POWER CORD).  
LOCATION OF DRAIN TUBE FOR REMOTE REF.  
ONLY (SUPPLIED WITH  $\frac{3}{4}$ " OR  $1\frac{1}{2}$ " PVC TUBE).**



**REFRIGERATION LINE CONNECTION.**



**REMOTE FLOOR SINK & UTILITIES ACCESS AREA.**



**SELF-CONTAINED CASE SERVICE ACCESS AREA.**



**DRY CASE SERVICE ACCESS AREA.**

## Model Technical Specifications

Model	L"	L1"	L2"	System Circuit Volts			Phs	Freq	Amps ***	Watts	Wires	NEMA Plug	SST	BTUH	Est Wt
B32	N/A	34.50	3.13	Remote(Type I)	Circuit #1	110-120	1	60	1.12	45	2+G	Leads Multiple	20.00	5900	800
				Self-Contained	Circuit #1	110-120	1	60	14.08	1,216	2+G	5-20P or L5-20P	N/A	N/A	
B42	N/A	45.50	3.13	Remote(Type I)	Circuit #1	110-120	1	60	2.13	197	2+G	Leads Multiple	20.00	6550	900
				Self-Contained	Circuit #1	110-120	1	60	16.00	1,372	2+G	5-20P or L5-20P	N/A	N/A	
B62	N/A	66.38	3.13	Remote(Type I)	Circuit #1	110-120	1	60	2.82	293	2+G	Leads Multiple	20.00	9500	1,100
				Self-Contained	Circuit #1	208-240	1	60	11.10	2,066	2+G	6-20P	N/A	N/A	
B82	N/A	88.38	3.13	Remote(Type I)	Circuit #1	110-120	1	60	3.67	371	2+G	Leads Multiple	20.00	12650	1,200

\*\*\* Does not include electric defrost on freezer models.

## Regulatory Approvals:

All Models	<p>Accordance with AHRI Std 1200</p> <p>ETL Listed to UL 471</p> <p>ETL Listed to CAN/CSA 22.2 No. 120</p> <p>UL Sanitation to NSF Std 7</p>
------------	--



In Accordance with  
**AHRI Std 1200**



### Important Notes:

- 1) ELECTRICAL NOTE: If GFCI is required, a GFCI breaker MUST be used in lieu of a GFCI receptacle
- 2) Performance issues (product temperatures, water on floor, etc.) caused by adverse conditions are not covered by warranty.
- 3) Keep unit at least 15' from exterior doors, overhead HVAC vents, or any air curtain disruption.
- 4) End panels must be tightly joined or kept at least 6" away from any structure to prevent condensation.
- 5) Do not expose unit to direct sunlight or any heat source (ovens, fryers, etc.).
- 6) Tile floors, low ceilings, or small rooms will increase noise level.

**⚠ WARNING:** This product can expose you to chemicals, including Urethane (Ethyl Carbamate), which are known to the State of California to cause cancer and birth defects or other reproductive harm. For more information go to [www.P65Warnings.ca.gov](http://www.P65Warnings.ca.gov).