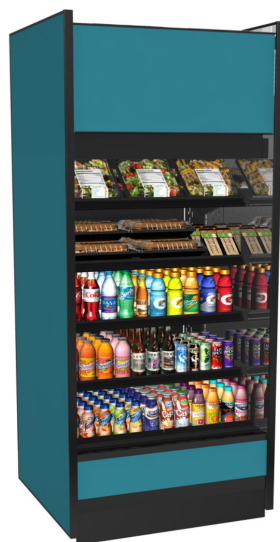


Refrigerated Self-Service Case - 32"D - Top Mount Compressor



MODEL SHOWN: B3632TM



- ☐ B3632TM
- ☐ B4732TM
- ☐ B5932TM
- ☐ B7132TM
- ☐ B8832TM

Lengths include end panels
36-5/8"L x 32-1/4"D x 82-1/2"H
47-5/8"L x 32-1/4"D x 82-1/2"H
59-5/8"L x 32-1/4"D x 82-1/2"H
71-5/8"L x 32-1/4"D x 82-1/2"H
88-3/8"L x 32-1/4"D x 82-1/2"H

STANDARD FEATURES

- Breeze~E (Type-II) w/ EnergyWise s/c refrigeration
- Blue Fin coated coil
- Compressor air intake and discharge at top. Top of unit must remain completely open. (minimum 8" clearance above needed for compressor air discharge)
- Condensate pan (self-contained refrig. only)
- Flat upper front panel & header
- Integrated average product temperature of 40°F or less
- LED 4000K top light(s)
- One piece formed ABS plastic tub (n/a B8832TM)
- One year parts & labor; 5 year compressor warranty
- Removable deck pans provide complete access to evaporator coil & refrigeration connections
- Shelving removable and adjustable on 1" centers

| Features | Standard | Options |
|-------------------------|---|---|
| EXTERIOR COLOR | <input type="checkbox"/> Laminated (non-premium) Confirm pattern/grain direction | <input type="checkbox"/> Laminated (premium) Confirm pattern/grain direction <input type="checkbox"/> Stainless steel (includes lower front panel) |
| INTERIOR COLOR | <input type="checkbox"/> Black | <input type="checkbox"/> Stainless steel |
| LOWER FRONT PANEL COLOR | <input type="checkbox"/> Painted - Black | <input type="checkbox"/> Stainless steel |
| TRIM COLOR | <input type="checkbox"/> Black | <input type="checkbox"/> Stainless steel |
| BASE | <input type="checkbox"/> Casters w/ levelers (n/a w/ remote ref.) | <input type="checkbox"/> Levelers (only) <input type="checkbox"/> Seismic levelers (Q4695) |
| END PANEL LEFT | <input type="checkbox"/> Full end panel w/mirror interior (metal edge matches interior color) | <input type="checkbox"/> Cutaway end panel (metal edge matches interior color) <input type="checkbox"/> No end panel w/ synchronized defrost |
| END PANEL RIGHT | <input type="checkbox"/> Full end panel w/mirror interior (metal edge matches interior color) | <input type="checkbox"/> Cutaway end panel (metal edge matches interior color) <input type="checkbox"/> No end panel w/ synchronized defrost |
| EXTERIOR BACK PANEL | <input type="checkbox"/> Solid back panel, black | <input type="checkbox"/> Rear loading hinged doors, locking |
| SHELVING | <input type="checkbox"/> Metal shelves, non-lighted | <input type="checkbox"/> Metal shelves, lighted (LED 4000K) |
| ELECTRICAL CONNECT | <input type="checkbox"/> 6' straight blade power cord (top exit) | <input type="checkbox"/> 6' locking blade power cord (top exit) <input type="checkbox"/> Electrical leads (remote) |
| REFRIGERATION | <input type="checkbox"/> Breeze~E (Type-II) w/ EnergyWise s/c refrigeration (front access) | <input type="checkbox"/> Breeze~E (Type-II) w/ EnergyWise s/c refrigeration (rear access) <input type="checkbox"/> Note: Remote doesn't incl Conds unit. Floor drain reqd. <input type="checkbox"/> Remote w/thermostat, solenoid & TXV |
| MISCELLANEOUS | | <input type="checkbox"/> Roll-down security cover, locking (Requires two full end panels) (n/a w/ night curtain) <input type="checkbox"/> Second year parts & labor warranty (excludes compressor) |
| ACCESSORIES | | <input type="checkbox"/> Clean Sweep® coil cleaner (n/a w/remote) <input type="checkbox"/> Night curtain, retractable, non-locking <input type="checkbox"/> Price tag molding (matches interior color) <input type="checkbox"/> Solid security cover, removable, locking |

Option Notes: 1 - See tech spec for remote load reqmts

Oasis®

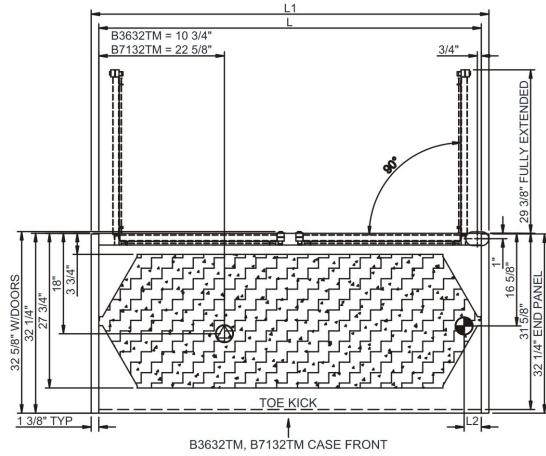
Product Specifications

Intended Environment: Type II - Designed to operate in ambient conditions of 80°F and 60% relative humidity unless noted otherwise in system information below.

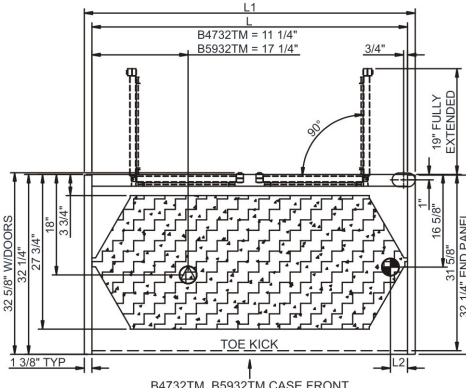
| Zone | Intended Product To Be Displayed | Warmest Avg Prod Temp ° F |
|------|----------------------------------|---------------------------|
| 1 | Packaged refrigerated products | 40 |

PLAN VIEW

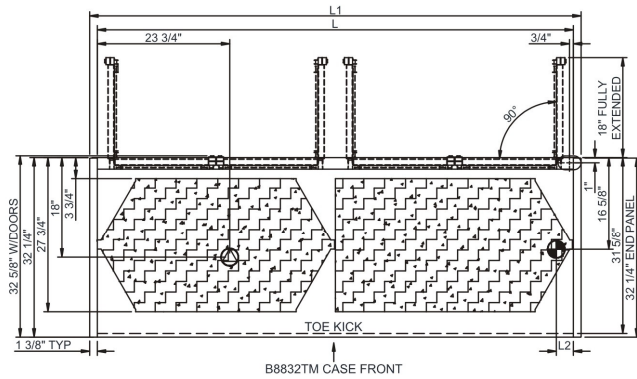
SIDE VIEW



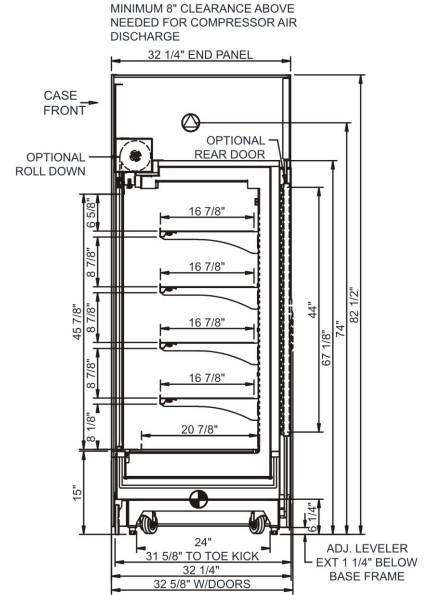
B3632TM, B7132TM CASE FRONT



B4732TM, B5932TM CASE FRONT



B8832TM CASE FRONT



NOTE: ALL DIMENSIONS APPROXIMATE

- ELECTRICAL JUNCTION BOX (SUPPLIED WITH 6" LEADS OR POWER CORD).
- LOCATION OF DRAIN TUBE FOR REMOTE REF. ONLY (SUPPLIED WITH 3/4" OR 1 1/2" PVC TUBE).
- REFRIGERATION LINE CONNECTION.
- REMOTE FLOOR SINK & UTILITIES ACCESS AREA.
- SELF-CONTAINED CASE SERVICE ACCESS AREA.
- DRY CASE SERVICE ACCESS AREA.

Model Technical Specifications

| Model | L" | L1" | L2" | System Circuit Volts | | | Phs | Freq | Amps *** | Watts | Wires | NEMA Plug | SST | Conv. Rack BTUH | Para. Rack BTUH | Est Wt |
|---------|-----|-------|------|----------------------|------------|---------|-----|------|----------|-------|-------|-----------------|-------|-----------------|-----------------|--------|
| B3632TM | N/A | 36.63 | 3.13 | Remote(Type I) | Circuit #1 | 110-120 | 1 | 60 | 1.14 | 56 | 2+G | Leads Multiple | 20.00 | 3542 | 3280 | 900 |
| | | | | Remote(Type II) | Circuit #1 | 110-120 | 1 | 60 | 1.14 | 56 | 2+G | Leads Multiple | 20.00 | 4320 | 4000 | |
| | | | | Self-Contained | Circuit #1 | 110-120 | 1 | 60 | 16.00 | 1,355 | 2+G | 5-20P or L5-20P | N/A | N/A | N/A | |
| B4732TM | N/A | 47.63 | 3.13 | Remote(Type I) | Circuit #1 | 110-120 | 1 | 60 | 1.99 | 180 | 2+G | Leads Multiple | 20.00 | 4882 | 4520 | 1,000 |
| | | | | Remote(Type II) | Circuit #1 | 110-120 | 1 | 60 | 1.99 | 180 | 2+G | Leads Multiple | 20.00 | 5918 | 5480 | |
| | | | | Self-Contained | Circuit #1 | 208-240 | 1 | 60 | 10.05 | 1,815 | 2+G | 6-20P or L6-20P | N/A | N/A | N/A | |
| B5932TM | N/A | 59.63 | 3.13 | Remote(Type I) | Circuit #1 | 110-120 | 1 | 60 | 2.42 | 224 | 2+G | Leads Multiple | 20.00 | 5746 | 5320 | 1,100 |
| | | | | Remote(Type II) | Circuit #1 | 110-120 | 1 | 60 | 2.42 | 224 | 2+G | Leads Multiple | 20.00 | 7042 | 6520 | |
| | | | | Self-Contained | Circuit #1 | 208-240 | 1 | 60 | 12.00 | 2,264 | 2+G | 6-20P or L6-20P | N/A | N/A | N/A | |
| B7132TM | N/A | 71.63 | 3.13 | Remote(Type I) | Circuit #1 | 110-120 | 1 | 60 | 2.62 | 270 | 2+G | Leads Multiple | 20.00 | 7042 | 6520 | 1,300 |
| | | | | Remote(Type II) | Circuit #1 | 110-120 | 1 | 60 | 2.62 | 270 | 2+G | Leads Multiple | 20.00 | 8618 | 7980 | |
| | | | | Self-Contained | Circuit #1 | 208-240 | 1 | 60 | 15.81 | 2,971 | 2+G | 6-20P or L6-20P | N/A | N/A | N/A | |
| B8832TM | N/A | 88.38 | 3.13 | Remote(Type I) | Circuit #1 | 110-120 | 1 | 60 | 3.49 | 349 | 2+G | Leads Multiple | 20.00 | 10606 | 9820 | 1,700 |
| | | | | Remote(Type II) | Circuit #1 | 110-120 | 1 | 60 | 3.49 | 349 | 2+G | Leads Multiple | 20.00 | 13046 | 12080 | |
| | | | | Self-Contained | Circuit #1 | 208-240 | 1 | 60 | 16.00 | 3,199 | 2+G | 6-30P or L6-30P | N/A | N/A | N/A | |

*** Does not include electric defrost on freezer models.

Regulatory Approvals:

All Models
 Accordance with AHRI Std 1200
 ETL Listed to UL 471
 ETL Listed to CAN/CSA 22.2 No. 120
 ETL Sanitation to NSF 7



In Accordance with
AHRI Std 1200

DOE 2017
 Energy Efficiency
 Compliant

Important Notes:

- 1) ELECTRICAL NOTE: If GFCI is required, a GFCI breaker MUST be used in lieu of a GFCI receptacle
- 2) Top of unit must remain completely open.
- 3) Performance issues (product temperatures, water on floor, etc.) caused by adverse conditions are not covered by warranty.
- 4) Keep unit at least 15' from exterior doors, overhead HVAC vents, or any air curtain disruption.
- 5) End panels must be tightly joined or kept at least 6" away from any structure to prevent condensation.
- 6) Do not expose unit to direct sunlight or any heat source (ovens, fryers, etc.).
- 7) Tile floors, low ceilings, or small rooms will increase noise level.

⚠ WARNING: This product can expose you to chemicals, including Urethane (Ethyl Carbamate), which are known to the State of California to cause cancer and birth defects or other reproductive harm. For more information go to www.P65Warnings.ca.gov.



888 E. Porter Rd.
 Muskegon, MI 49441
 Ph. 231-798-8888
 Fx. 231-798-4960
www.structuralconcepts.com

Note: Information is subject to change at any time.
 Visit www.structuralconcepts.com for the most current specs.

Revised 12/10/2019

20342816