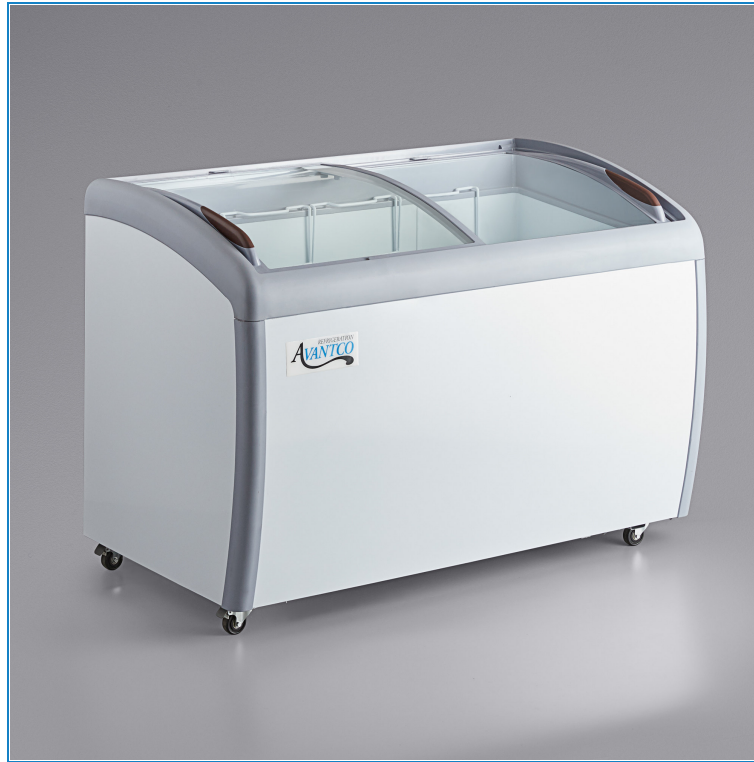


Avantco DFC13-HCL 49 3/4" Curved Top Display Ice Cream Freezer

Item #360DFC13HCL



Technical Data

Width	49 5/8 Inches
Depth	28 1/8 Inches
Height	34 1/2 Inches
Interior Width	43 3/4 Inches
Interior Depth	21 1/4 Inches
Interior Height	26 1/8 Inches
Amps	4 Amps
Hertz	60 Hertz
Phase	1 Phase
Voltage	115 Volts
Basket Capacity	4
Cabinet Type	Merchandising
Capacity	9 cu. ft.
Color	White
Compressor Location	Bottom Mounted
Door Style	Sliding
Door Type	Glass
Horsepower	2/5 HP
Lid Type	Curved
Number of Doors	2 Doors
Plug Type	NEMA 5-15P
Refrigerant Type	R-290
Shape	Rectangle
Temperature Range	-8 - -4 Degrees F
Total BTU	1092 BTU
Type	Freezers
Usage	Ice Cream

Features

- Durable white powder coated steel exterior with painted steel interior
- Curved locking glass lids let you see interior contents while securing them from theft
- Comes with 4 freezer baskets for efficient organization
- Bright, cool LED lighting shows off ice cream, frozen treats, and novelties
- Eco-friendly R-290 refrigerant; 115V, 2/5 hp

Certifications



5-15P

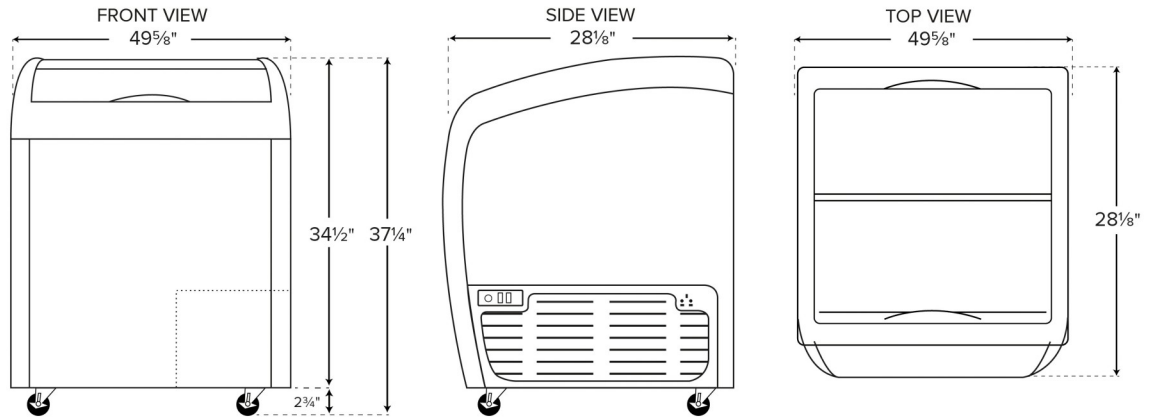


ETL US



ETL Sanitation

Plan View



Notes & Details

Add ice cream or frozen treats and novelties to your business and boost impulse sales with the help of this Avantco DFC13-HCL curved top display freezer. Thanks to a spacious interior this freezer is an excellent choice for convenience stores, diners, and markets. The locking glass lids protect your cold treats during off hours, while the crystal clear visibility and LED lighting show off the products within. This ice cream freezer's front-facing temperature control is tamper-proof, preventing accidental adjustment and ensuring that the quality of your frozen treats won't be compromised. The temperature control can be adjusted easily with a screwdriver when necessary.

The interior is made of painted steel, while the exterior is made of white powder coated steel, ensuring durability and longevity in your commercial environment. Four PVC coated baskets are included to help organize the freezer's contents and keep smaller items within easy reach of your customers.

The included casters provide easy mobility and make cleaning much simpler. The freezer's 2/5 hp compressor uses eco-friendly R-290 refrigerant to deliver consistent temperatures between -8 and -4 degrees Fahrenheit. This specialized refrigerant has an ozone depletion potential (ODP) of 0 and a global warming potential (GWP) of 3, making it an environmentally-responsible choice for your business. Plus, a drain and plug make cleaning and defrosting the interior a breeze. A 115V electrical connection is required for operation.

⚠ WARNING: This product can expose you to chemicals including lead, which are known to the State of California to cause cancer, birth defects, or other reproductive harm. For more information, go to www.p65warnings.ca.gov.