

# 330 SERIES



- **Type 1A Straight Ladder**  
300 lbs. capacity

- **Solid Aluminum Rivet Construction**

Solid aluminum rivet construction at critical stress points is stronger than tubular steel rivets and results in a longer service life for your ladder.

- **Direct Rung-To-Rail Design**

Our high-profile, slip-resistant D-shaped rungs are mounted through the side rails for a tight and sturdy direct connection.

- **Two-way Suction Cup/Spike Shoe**

The shoe attachments on the 315 are reinforced with castings and heavy gauge aluminum reinforcement sleeves to provide a stronger connection point for our suction cup/spike shoes.

- **Acrylic End Caps**

Bauer's cast acrylic end caps provide protection to side rail ends, are impact resistant, and won't mark surfaces like aluminum end caps do.

- **Aluminum End Caps**

Cast aluminum end caps are featured on the 33018, 33020 and 33024 models.



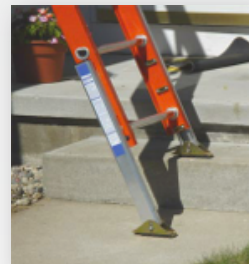
Part #	Size	Highest Standing Level	Bottom Width	Approximate Weight	Approximate Cube
33008	8'	4'9"	17 1/8"	19 lbs.	3.5
33010	10'	6'9"	17 1/8"	23 lbs.	4.2
33012	12'	8'9"	17 1/8"	26 lbs.	5.0
33014	14'	10'9"	17 1/8"	30 lbs.	5.9
33016	16'	12'9"	17 1/8"	33 lbs.	6.7
33018*	18'	14'9"	19 1/4"	54 lbs.	9.6
33020*	20'	16'9"	19 1/4"	60 lbs.	10.3
33024*	24'	20'9"	19 1/4"	66 lbs.	15.2

\*Riveted Rung-to-Rail Design

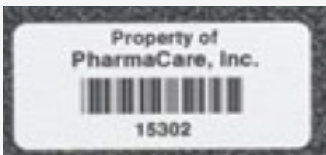
Standard Features	Bauer 330	Werner D6200-1	Louisville N/A
Type IA 300 lb. Rated	✓	✓	
Non-conductive Side Rails	✓	✓	
Solid Aluminum Rivet Construction	✓		
Direct Rung-to-Rail Design	✓	✓	
High Profile D Rung	✓	✓	
Non-marring End Caps	✓	✓	
2-way Spike/Suction Cup Shoes	✓	✓	
Aluminum Reinforcement Sleeves	✓	✓	
Zinc-plated Steel Hardware	✓		
Safety Yellow Side Rails	✓	✓	

**ADD ON OPTIONS:****PROTECTIVE RAIL SLEEVE**

Ladder racks are a ladders worst enemy! Bauer has designed a protective rail guard that absorbs the abrasion and vibration that is harmful to ladders. Your ladders will last longer!

**AUTOMATIC LEG LEVELERS**

Unlike our competition our auto levelers have been tested, approved, and are labeled as a 375 lbs capacity. So when installed on a Type 1AA, 375 lbs rated ladder the ladder rating is maintained.

**ASSET MANAGEMENT TAGS**

Serial number ID systems to effectively track inspections and repairs as well as the length of time a ladder has been in service.

**POLY COATING**

Bauer is the only manufacture to offer poly coating to provide added protection from harmful UV rays.

**SUPERIOR SERVICE!**

Bauer manufactures ladders strictly for cable and utility companies, not the home centers! We stock what you order and ship quick. Standard lead times are 2-3 days, not weeks! We ship quick and typically damage free! Bauer over-packages our shipments, decreasing the likelihood of aggravating freight claims.



1505 E Bowman Street  
Wooster, Ohio 44691

Tel: 800-321-4760  
Fax: 800-419-5598  
E-mail: [sales@ladder.com](mailto:sales@ladder.com)  
Web: [www.bauerladder.com](http://www.bauerladder.com)

