

315 SERIES



• Type 1AA Extension Ladder

375 lbs. capacity

• Solid Aluminum Rivet Construction

Solid aluminum rivet construction at critical stress points is stronger than tubular steel rivets and results in a longer service life for your ladder.

• Two-way Suction Cup/Spike Shoe

The shoe attachments on the 315 are reinforced with castings and heavy gauge aluminum reinforcement sleeves to provide a stronger connection point for our suction cup/spike shoes.

• Center-Point Labeling

A target label designates the center-point for the weight of the ladder so the user knows where to grab the ladder to transport it safely: promoting safe handling/lifting techniques.

• Safety Red Rungs

Highest standing level is clearly defined and has never been easier to determine. It's easy don't stand on red!

• Internal & External Rail Guides

Internal and external rail guides provide added safety and ease of use over competitive models with only external rail guides.

• Upgraded Rope Is Standard

3/8" diameter rope poly-plus rope with wear indicator. Durable rope that is also much easier on the user's hands.



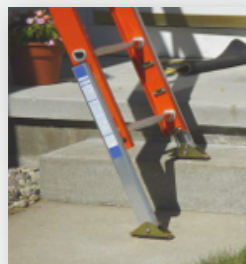
Part #	Size	Extended Length	Highest Standing Level	Bottom Width	Approximate Weight	Approximate Cube
31516	16'	13"	9'6"	17 3/4"	42 lbs.	6.5
31520	20'	17"	13'6"	17 3/4"	51 lbs.	8.0
31524	24'	21"	17'6"	17 3/4"	60 lbs.	9.6
31528	28'	25"	21'6"	17 3/4"	68 lbs.	11.2
31532	32'	29"	25'6"	17 3/4"	77 lbs.	12.8
31536*	36'	32"	28'6"	18 7/8"	107 lbs.	19.2
31540*	40'	35"	31'6"	18 7/8"	116 lbs.	21.3

*ANSI Type IA 300 lb. Rated

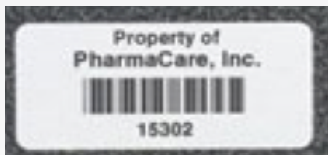
Standard Features	Bauer 315	Werner D7500	Louisville FE4200
Type IA 375 lb. Rated	✓	✓	✓
Non-conductive Side Rails	✓	✓	✓
Solid Aluminum Rivet Construction	✓		
Interlocking Side Rail Design	✓	✓	✓
Riveted Rung-to-Rail Design	✓	✓	✓
High Profile D Rung	✓	✓	✓
Cast Aluminum Rung Locks	✓	✓	✓
Upgraded Rope & Pulley System	✓		
Zinc-plated Steel Hardware	✓		
Non-marring End Caps	✓	✓	✓
2-way Spike/Suction Cup Shoes	✓	✓	✓
Aluminum Reinforcement Sleeves	✓	✓	✓
Internal and External Rail Guides	✓	✓	✓
Center-Point Label	✓		
Safety Red Rungs	✓		

ADD ON OPTIONS:**PROTECTIVE RAIL SLEEVE**

Ladder racks are a ladders worst enemy! Bauer has designed a protective rail guard that absorbs the abrasion and vibration that is harmful to ladders. Your ladders will last longer!

AUTOMATIC LEG LEVELERS

Unlike our competition our auto levelers have been tested, approved, and are labeled as a 375 lbs capacity. So when installed on a Type 1AA, 375 lbs rated ladder the ladder rating is maintained.

ASSET MANAGEMENT TAGS

Serial number ID systems to effectively track inspections and repairs as well as the length of time a ladder has been in service.

POLY COATING

Bauer is the only manufacture to offer poly coating to provide added protection from harmful UV rays.

**SUPERIOR SERVICE!**

Bauer manufactures ladders strictly for cable and utility companies, not the home centers! We stock what you need and ship quick.

Standard lead times are 2-3 days, not weeks! And almost as important, we typically ship damage free! Bauer over-packages our shipments, decreasing the likelihood of aggravating freight claims.



2540 Progress Drive
Wooster, Ohio 44691

Tel: 800-321-4760
Fax: 800-419-5598
E-mail: sales@ladder.com
Web: www.bauerladder.com

