

Combination Non-Refrigerated Service Above Refrigerated Self-Service Case



MODEL SHOWN: HUDLR4852

NOTE: SHOWN W/ OPTIONAL DISPLAY STEPS IN LOWER AREA

- ☐ HUDLR3852
- ☐ HUDLR4852
- ☐ HUDLR5652
- ☐ HUDLR7452

Lengths include end panels
40"L x 42"D x 52-3/4"H
50"L x 42"D x 52-3/4"H
58"L x 42"D x 52-3/4"H
76"L x 42"D x 52-3/4"H

STANDARD FEATURES

- Breeze™ w/EnergyWise s/c refrigeration
- Clear glass shelf, lighted (LED 3500K) in upper display
- Compressor air rear intake, front discharge. Toe kick cannot be blocked
- Condensate pan (self-contained refrig. only)
- Curved single pane, lift-up front glass w/o lock
- Cutaway end panels w/mirror interior in lower section
- Flat front panel
- Integrated average product temperature of 40°F or less
- LED 3500K top & shelf lights
- Lower refrigerated self-service display deck
- Non-refrigerated upper display
- One year parts & labor; 5 year compressor warranty
- Shelving removable and adjustable on 1" centers

Features	Standard	Options
EXTERIOR COLOR	<input type="checkbox"/> Laminated (non-premium) Confirm pattern/grain direction	<input type="checkbox"/> Laminated (premium) Confirm pattern/grain direction <input type="checkbox"/> Stainless steel (includes rear of case)
INTERIOR COLOR	<input type="checkbox"/> Black	<input type="checkbox"/> Stainless steel <input type="checkbox"/> White
REAR EXTERIOR COLOR	<input type="checkbox"/> Painted - White	<input type="checkbox"/> Painted - Black <input type="checkbox"/> Stainless steel (w/stainless ext. only)
TRIM COLOR	<input type="checkbox"/> Black	<input type="checkbox"/> Silver
BASE	<input type="checkbox"/> Levelers	<input type="checkbox"/> 6"H legs <input type="checkbox"/> Casters (n/a with remote)
UPPER FRONT	<input type="checkbox"/> Curved single pane, lift-up front glass	<input type="checkbox"/> Acrylic lift-up front doors (free fall) <input type="checkbox"/> Acrylic lift-up front doors (slow close hinges)
UPPER REAR	<input type="checkbox"/> Clear glass rear sliding doors w/o lock	<input type="checkbox"/> Reflective glass rear sliding doors w/o lock
ELECTRICAL CONNECT	<input type="checkbox"/> 6' straight blade power cord (self-cont.)	<input type="checkbox"/> 6' locking power cord (self-cont.) <input type="checkbox"/> Electrical leads (remote)
REFRIGERATION	<input type="checkbox"/> Breeze™ w/EnergyWise s/c refrigeration	<input type="checkbox"/> Note: Remote doesn't incl Conds unit. Floor drain reqd. <input type="checkbox"/> Remote w/thermostat, solenoid & TXV
MISCELLANEOUS		<input type="checkbox"/> Rear door lock <input type="checkbox"/> Second year parts & labor warranty (excludes compressor)
ACCESSORIES		<input type="checkbox"/> 2"H Display steps for lower display <input type="checkbox"/> 2"H Full depth display riser(s) for lower display <input type="checkbox"/> 4"H Display steps for lower display <input type="checkbox"/> 4"H Full depth display riser(s) for lower display <input type="checkbox"/> Clear glass lighted shelf in lower display <input type="checkbox"/> Night curtain, retractable, non-locking <input type="checkbox"/> Price tag molding (matches interior color) <input type="checkbox"/> Rear wrapping board <input type="checkbox"/> Removable wire security cover, locking (for lower display, secures upper/lower)

Product Specifications

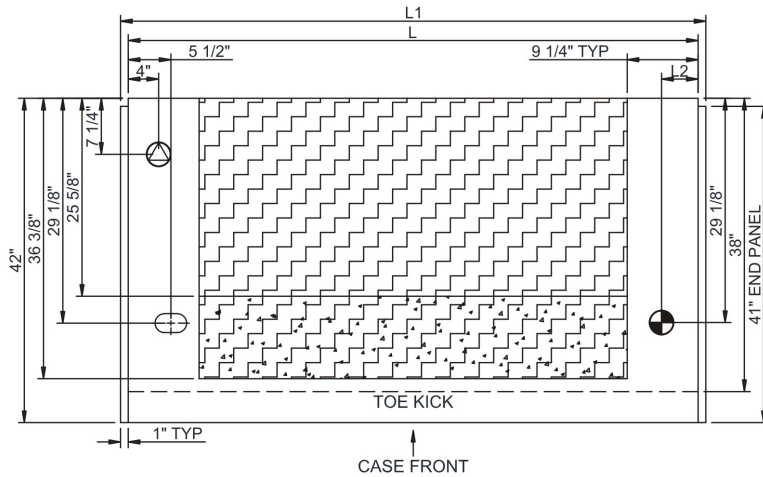
Zone	Intended Product To Be Displayed
------	----------------------------------

1	Packaged / unpackaged refrigerated products
---	---

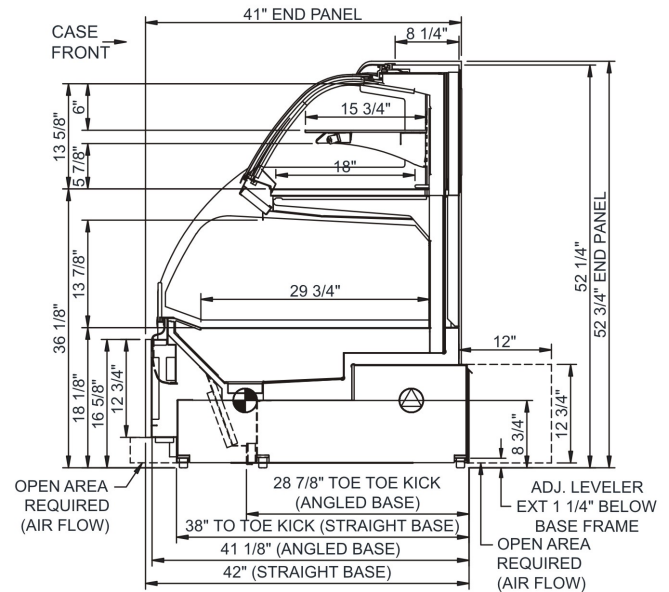
Warmest Avg Prod Temp ° F	
1	100
2	100
3	100
4	100
5	100
6	100
7	100
8	100
9	100
10	100
11	100
12	100
13	100
14	100
15	100
16	100
17	100
18	100
19	100
20	100
21	100
22	100
23	100
24	100
25	100
26	100
27	100
28	100
29	100
30	100
31	100
32	100
33	100
34	100
35	100
36	100
37	100
38	100
39	100
40	100
41	100
42	100
43	100
44	100
45	100
46	100
47	100
48	100
49	100
50	100
51	100
52	100
53	100
54	100
55	100
56	100
57	100
58	100
59	100
60	100
61	100
62	100
63	100
64	100
65	100
66	100
67	100
68	100
69	100
70	100
71	100
72	100
73	100
74	100
75	100
76	100
77	100
78	100
79	100
80	100
81	100
82	100
83	100
84	100
85	100
86	100
87	100
88	100
89	100
90	100
91	100
92	100
93	100
94	100
95	100
96	100
97	100
98	100
99	100
100	100


40

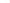
PLAN VIEW



SIDE VIEW



 **ELECTRICAL JUNCTION BOX**
(SUPPLIED WITH 6" LEADS OR POWER CORD).

 **LOCATION OF DRAIN TUBE FOR REMOTE REF.**
ONLY (SUPPLIED WITH 3/4" OR 1 1/2" PVC TUBE).

 REFRIGERATION LINE CONNECTION.

 REMOTE FLOOR SINK & UTILITIES ACCESS AREA.

 SELF-CONTAINED CASE SERVICE ACCESS AREA.

 DRY CASE SERVICE ACCESS AREA.

Model Technical Specifications

Model	L"	L1"	L2"	System Circuit Volts			Phs	Freq	Amps ***	Watts	Wires	NEMA Plug	SST	Conv. Rack BTUH	Para. Rack BTUH	Est Wt
HUDLR3852	N/A	40.00	10.38	Remote(Type I)	Circuit #1	110-120	1	60	1.34	113	2+G	Leads Multiple	24.00	1522	1410	800
				Remote(Type I)	Circuit #1	110-120	1	60	1.34	113	2+G	Leads Multiple	24.00	1555	1440	
				Self-Contained	Circuit #1	110-120	1	60	13.80	999	2+G	5-15P or L5-15P	N/A	N/A	N/A	
HUDLR4852	N/A	50.00	10.38	Remote(Type I)	Circuit #1	110-120	1	60	1.60	150	2+G	Leads Multiple	24.00	2216	2052	950
				Self-Contained	Circuit #1	110-120	1	60	16.00	1,230	2+G	5-20P or L5-20P	N/A	N/A	N/A	
HUDLR5652	N/A	58.00	10.38	Remote(Type I)	Circuit #1	110-120	1	60	1.88	182	2+G	Leads Multiple	24.00	2471	2288	1,000
				Self-Contained	Circuit #1	120/230V	1	60	8.58	1,441	3+G	14-20P or L14-20P	N/A	N/A	N/A	
HUDLR7452	N/A	76.00	10.38	Remote(Type I)	Circuit #1	110-120	1	60	2.57	237	2+G	Leads Multiple	24.00	3230	2990	1,300
				Self-Contained	Circuit #1	120/230V	1	60	10.72	1,819	3+G	14-20P or L14-20P	N/A	N/A	N/A	

*** Does not include electric defrost on freezer models.

Regulatory Approvals:

None



In Accordance with
AHRI Std 1200

DOE 2017
Energy Efficiency
Compliant

Important Notes:

- 1) ELECTRICAL NOTE: If GFCI is required, a GFCI breaker MUST be used in lieu of a GFCI receptacle
- 2) 43" Minimum door entry clearance required (without shipping skid).
- 3) Compressor air rear intake, front discharge. Toe kick cannot be blocked.
- 4) Units are supplied with levelers. They must be adjusted during installation to ensure the unit is level and plumb. Dimensions reflect levelers extended 1 1/4".

⚠ WARNING: This product can expose you to chemicals, including Urethane (Ethyl Carbamate), which are known to the State of California to cause cancer and birth defects or other reproductive harm. For more information go to www.P65Warnings.ca.gov.