

Heated Self-Service Case - 32"D



MODEL SHOWN: B3632H

NOTE: SHOWN WITH OPTIONAL STAINLESS STEEL EXTERIOR

- B2432H
- B2432H-4
- B3632H
- B3632H-4

Lengths include end panels	
24-1/2"L x 32-1/4"D x 82-1/2"H	
24-1/2"L x 32-1/4"D x 82-1/2"H	
36-1/2"L x 32-1/4"D x 82-1/2"H	
36-1/2"L x 32-1/4"D x 82-1/2"H	

STANDARD FEATURES

- NOTE: The additional shelf option significantly increases electrical load for model. Refer to the -4 suffix model for these specifications.
- Flat upper front panel & header
- Integrated average product temperature of 160°F
- One year parts & labor warranty
- Shelving removable and adjustable on 1" centers
- Stainless steel interior
- Top light (matches shelf lights)

Features	Standard	Options
EXTERIOR COLOR	<input type="checkbox"/> Laminated (non-premium) Confirm pattern/grain direction	<input type="checkbox"/> Laminated (premium) Confirm pattern/grain direction <input type="checkbox"/> Stainless steel (includes lower front panel)
LOWER FRONT PANEL COLOR	<input type="checkbox"/> Painted - Black	<input type="checkbox"/> Stainless steel (w/stainless ext. only)
BASE	<input type="checkbox"/> Casters w/ levelers	
END PANEL LEFT	<input type="checkbox"/> Full end panel w/mirror interior (metal edge matches interior color)	<input type="checkbox"/> Cutaway end panel (metal edge matches interior color)
END PANEL RIGHT	<input type="checkbox"/> Full end panel w/mirror interior (metal edge matches interior color)	<input type="checkbox"/> Cutaway end panel (metal edge matches interior color)
EXTERIOR BACK PANEL	<input type="checkbox"/> Solid back panel, black	<input type="checkbox"/> Rear loading swing out doors (black) <input type="checkbox"/> Rear loading swing out doors (stainless)
SHELVING	<input type="checkbox"/> Individually controlled solid heated shelves, lighted (incandescent) - 3 levels	<input type="checkbox"/> Individually controlled solid heated shelves, lighted (ceramic metal halide) - 3 levels <input type="checkbox"/> ¹ Individually controlled solid heated shelves, lighted (ceramic metal halide) - 4 levels <input type="checkbox"/> ² Individually controlled solid heated shelves, lighted (incandescent) - 4 levels
LIGHTS	<input type="checkbox"/> Incandescent lights	<input type="checkbox"/> Ceramic Metal Halide high efficiency lighting
ELECTRICAL CONNECT	<input type="checkbox"/> 6' straight blade power cord	<input type="checkbox"/> 6' locking blade power cord
MISCELLANEOUS		<input type="checkbox"/> Second year parts & labor warranty (excludes compressor)
ACCESSORIES		<input type="checkbox"/> Price tag molding (matches interior color)

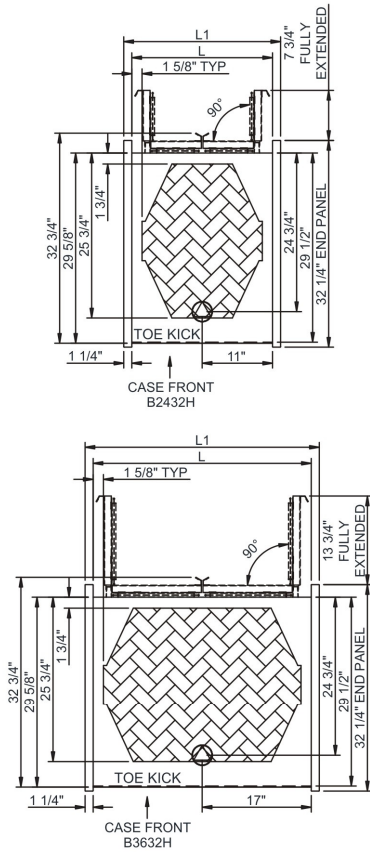
Option Notes: 1 - See -4 tech spec for load reqmts
 2 - See -4 tech spec for load reqmts

Oasis®

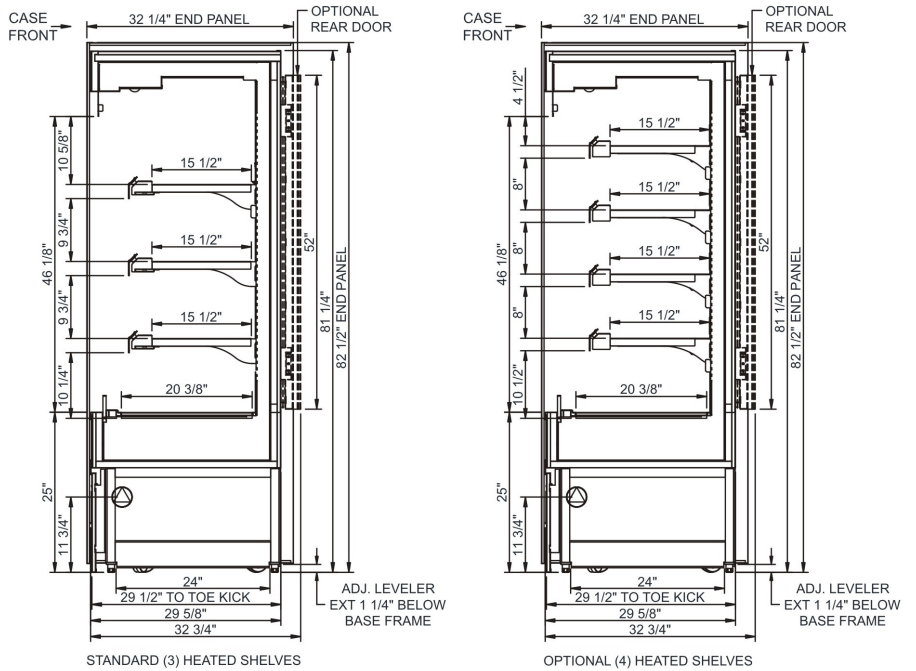
Product Specifications

Intended Environment: Type I - Designed to operate in ambient conditions of 75°F with 55% relative humidity unless noted otherwise in system information below.		
Zone	Intended Product To Be Displayed	Warmest Avg Prod Temp ° F
1	Packaged heated product	160

PLAN VIEW



SIDE VIEW



NOTE: ALL DIMENSIONS APPROXIMATE

- ELECTRICAL JUNCTION BOX (SUPPLIED WITH 6' LEADS OR POWER CORD).
- REMOTE FLOOR SINK & UTILITIES ACCESS AREA.
- LOCATION OF DRAIN TUBE FOR REMOTE REF. ONLY (SUPPLIED WITH 3/4" OR 1 1/2" PVC TUBE).
- SELF-CONTAINED CASE SERVICE ACCESS AREA.
- REFRIGERATION LINE CONNECTION.
- DRY CASE SERVICE ACCESS AREA.

Model Technical Specifications

Model	L"	L1"	L2"		System Circuit Volts	Phs	Freq	Amps ***	Watts	Wires	NEMA Plug	SST	Conv. Rack BTUH	Para. Rack BTUH	Est Wt
B2432H	N/A	24.50	.00	Heat	Circuit #1 208-240	1	60	13.91	2,942	2+G	6-20P or L6-20P	N/A	N/A	N/A	800
B2432H-4	N/A	24.50	.00	Heat	Circuit #1 208-240	1	60	15.30	3,252	2+G	6-20P or L6-20P	N/A	N/A	N/A	800
B3632H	N/A	36.50	.00	Heat	Circuit #1 208-240	1	60	20.34	4,296	2+G	6-30P or L6-30P	N/A	N/A	N/A	1,000
B3632H-4	N/A	36.50	.00	Heat	Circuit #1 208-240	1	60	23.54	5,031	2+G	6-30P or L6-30P	N/A	N/A	N/A	1,000

*** Does not include electric defrost on freezer models.

Regulatory Approvals:

All Models ETL Listed to UL 197
ETL Listed to CAN/CSA 22.2 No. 109
ETL Sanitation to NSF 4



Important Notes:

- 1) ELECTRICAL NOTE: If GFCI is required, a GFCI breaker MUST be used in lieu of a GFCI receptacle
- 2) Performance issues (product temperatures, water on floor, etc.) caused by adverse conditions are not covered by warranty.
- 3) Keep unit at least 15' from exterior doors, overhead HVAC vents, or any air curtain disruption.
- 4) Do not expose unit to direct sunlight or any heat source (ovens, fryers, etc.).

⚠ WARNING: This product can expose you to chemicals, including Urethane (Ethyl Carbamate), which are known to the State of California to cause cancer and birth defects or other reproductive harm. For more information go to www.P65Warnings.ca.gov.