

ADVANTEDGE™ HALF-DOOR REACH-IN FREEZERS



PROJECT:

ITEM NUMBER:

MODEL NUMBER:

SPECIFICATIONS FOR: NLF23-SH, NLF49-SH, NLF72-SH

- **Exterior Finish:** Exterior front, sides and doors are stainless steel. Exterior top, bottom and back are galvanized steel.
- **Interior Finish:** Interior liner and interior door panel are stainless steel.
- **Insulation:** The complete cabinet and door(s) are foamed-in-place with polyurethane foam insulation.
- **Hardware:** Heavy duty, pivot hinges; key locks; curved handle with recessed pocket; self-adjusting magnetic gaskets; 4" dia. casters (4 casters on one and two door models and 6 casters on three door model); 4 vinyl coated shelves per section; complete perimeter, anti-condensate door frame heater wires
- **Electrical:** An interior light is activated by a switch for each upper door.
- **Instrumentation:** Microprocessor with digital display allows temperature adjustment at control panel. Reads °F or °C.
- **Refrigeration:** Complete bottom mounted refrigeration system with a copper tube, ceiling mount aluminum fin evaporator. The condensate is collected and automatically evaporated from an energy efficient air over wick style vaporizer. Drain line is recessed in cabinet back. Refrigerant flow is controlled by a capillary tube. R-404a refrigerant. Operating temperature range: -5°F to 0°F.
- **Approvals:** UL, C-UL, ETL Sanitation

STANDARD FEATURES

- Air-cooled condensing unit
- Automatic condensate vaporizer
- Automatic defrost
- Casters
- Capillary tube system
- Curved handle with recessed pocket
- Door open alarm
- Interior light
- Key locks
- Magnetic gasket
- Microprocessor with digital display
- Operating temperature range: -5°F to 0°F

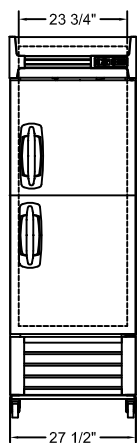
OPTIONAL FEATURES*

- Polyurethane insulation
- R-404a refrigerant
- Stainless steel interior and exterior
- Vinyl coated shelves
- UL, C-UL, & ETL Sanitation
- Warranties: 3 year parts and labor, 5 year compressor
- 6" adjustable legs
- Extra vinyl-coated wire shelves
- Pan slide rack (part # 146515)

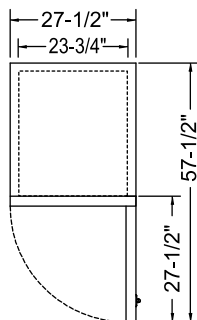
* Most options are available two weeks from receipt of order. Please contact us for specific questions.

** C-UL is Underwriters Laboratories Safety Certification Mark which indicates that UL has tested the equipment to applicable CSA Standards.

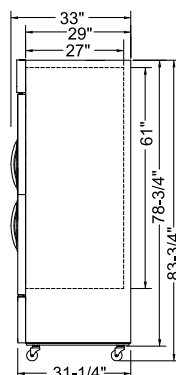
** ETL Sanitation is Intertek Labs Certification Mark which indicates that ETL has tested the equipment to applicable NSF Standards.



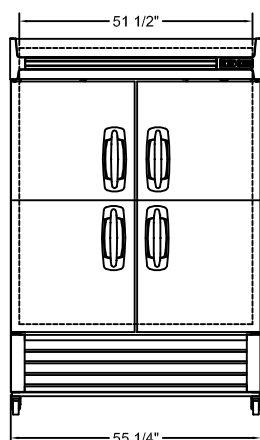
NLF23-SH
FRONT



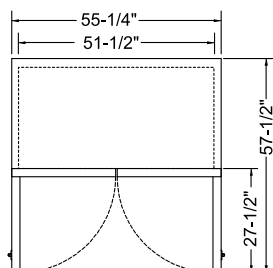
NLF23-SH
TOP



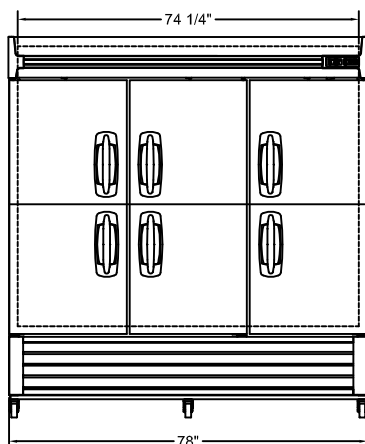
SIDE VIEW
ALL MODELS



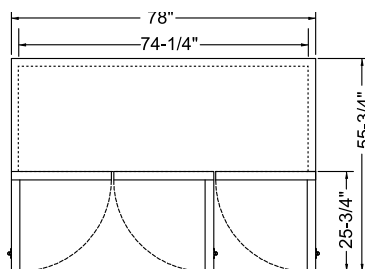
NLF49-SH
FRONT



NLF49-SH
TOP



NLF72-SH
FRONT



NLF72-SH
TOP

SPECIFICATIONS

Models	NLF23-SH	NLF49-SH	NLF72-SH
Crated Weight (lbs) (kg)	302 (137)	460 (209)	618 (280)
Crated Height (in) (cm)	84-1/4 (214)	84-1/4 (214)	84-1/4 (214)
Crated Width (in) (cm)	29-1/8 (74)	56-3/4 (144)	78-3/8 (199)
Crated Depth (in) (cm)	33-1/2 (85)	33-1/2 (85)	33-1/2 (85)
Interior Height (in) (cm)	61 (155)	61 (155)	61 (155)
Interior Width (in) (cm)	23-3/4 (60)	51-1/2 (131)	74-1/4 (189)
Interior Depth (in) (cm)	27 (69)	27 (69)	27 (69)
Overall Height (in) (cm)	83-3/4 (213)	83-3/4 (213)	83-3/4 (213)
Overall Width (in) (cm)	27-1/2 (70)	55-1/4 (140)	78 (198)
Overall Depth (in) (cm)	33 (84)	33 (84)	33 (84)
Gross Cubage (CuFt) (L)	23.0 (651)	49.0 (1387)	72.0 (2038)
Number of Shelves	4	8	12
Shelf Area (SqFt) (Sqm)	18 (1.67)	39 (3.6)	56.5 (5.25)
Number of Doors	2	4	6
Number of Casters	4	4	6
Condensing Unit Size	3/5 HP	4/5 HP	1 HP
Refrigerant	R-404a	R-404a	R-404a
Electrical Characteristics	115/60/1	115/60/1	115/60/1
Cord & Plug Furnished	Yes	Yes	Yes
NEMA Plug Configuration	5-15P	5-15P	5-20P
Total Amp Draw	8.5	10.5	12.0

Specifications subject to change without notice.



NORLAKE[®]

Revision Date: 03/17
© 2015 NOR-LAKE, INC.
Printed in the U.S.A.
Part Number: 158006