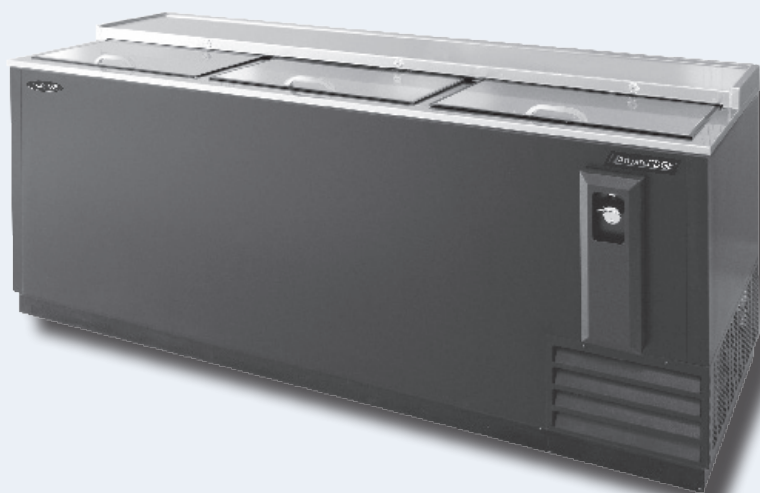


ADVANTEDGE™ BOTTLE COOLERS



NLBC80

PROJECT:

ITEM NUMBER:

MODEL NUMBER:

BOTTLE COOLERS

SPECIFICATIONS FOR: NLBC50, NLBC65, NLBC80 & NLBC95

- Finish: Black vinyl coated steel cabinet exterior front, sides and back with stainless steel top and sliding covers. Interior galvanized walls and stainless steel floor with floor drain.
- Insulation: Foamed-in-place with 1-1/2" CFC free polyurethane insulation.
- Hardware: Standard with removable bottle opener cap catcher, integrated glass rail on rear top, easy glide sliding lids with locks. Adjustable product dividers supplied. Plastic breaker strips around door openings to limit the formation of any condensation.
- Electrical: 115 volt, 60 Hz, 1 phase with cord and NEMA 5-15P plug.
- Refrigeration: Self-contained forced air R-134a capillary tube refrigeration system. Automatic defrost and condensate evaporator requires no plumbing. Adjustable temperature control with temperature range: +34°F to +38°F.
- Approvals: UL, C-UL Safety and ETL Sanitation (US & Canada) **

STANDARD FEATURES

- Adjustable temperature control
- Air cooled condensing unit
- Automatic defrost and condensate evaporator
- Black vinyl coated steel exterior
- Capillary tube system
- Durable galvanized interior walls
- Removable cap catcher
- Multiple evaporator fan motors
- Stainless steel top with integrated glass rail
- Stainless steel interior floor
- Stainless steel sliding lids with locks
- Temperature range: +34°F to +38°F
- Vinyl coated product dividers
- UL, C-UL Safety and ETL Sanitation (US & Canada) **
- Warranties: 3 year parts & labor, 5 year compressor

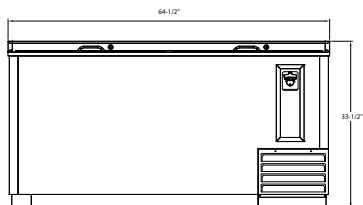
OPTIONAL FEATURES*

- Additional dividers
- 4" plate casters

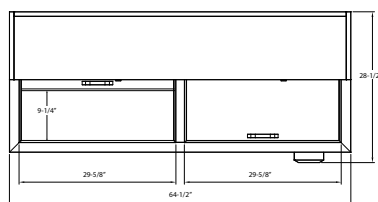
*Most options are available one week from receipt of order. Please contact us for specific questions.

** C-UL is Underwriters Laboratories Safety Certification Mark which indicates that UL has tested the equipment to applicable CSA Standards.

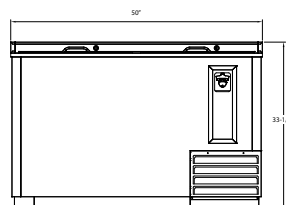
** ETL Sanitation is Intertek Laboratories Sanitation Mark which indicates that ETL has tested the equipment to applicable NSF Standards.



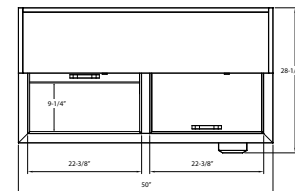
FRONT
NLBC65



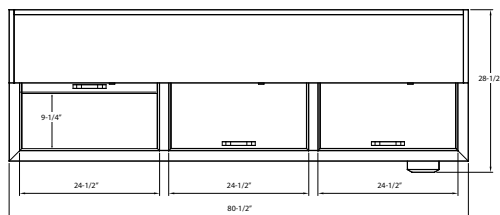
TOP
NLBC65



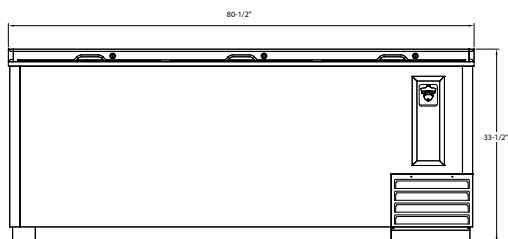
FRONT
NLBC50



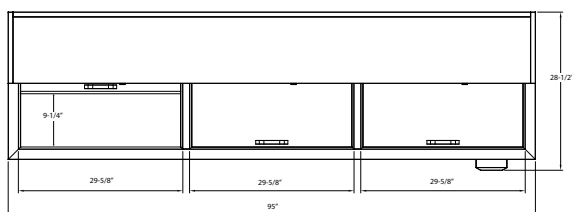
TOP
NLBC50



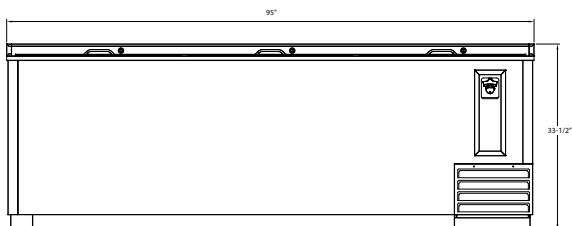
TOP
NLBC80



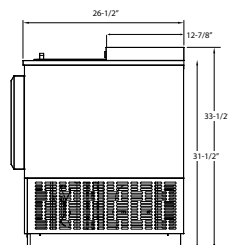
FRONT
NLBC80



TOP
NLBC95



FRONT
NLBC95



SIDE VIEW
ALL MODELS



NORLAKE[®]

Revision Date: 04/16
©2016 NOR-LAKE, INC
Printed in the USA
Part Number: 143469

Standex
Food Service Equipment Group

SPECIFICATIONS

Models	NLBC50	NLBC65	NLBC80	NLBC95
Crated Weight (lbs) (kg)	260 (118)	310 (141)	415 (188)	430 (195)
Crated Height (in) (cm)	41 (104)	41 (104)	41 (104)	41 (104)
Crated Width (in) (cm)	52-1/2 (133)	67 (170)	83 (211)	97-1/2 (248)
Crated Depth (in) (cm)	29-1/8 (74)	29-1/8 (74)	29-1/8 (74)	29-1/8 (74)
Interior Height (in) (cm)	27-7/8 (71)	27-7/8 (71)	27-7/8 (71)	27-7/8 (71)
Interior Width (in) (cm)	46 (117)	60-1/2 (154)	76-1/2 (194)	91 (231)
Interior Depth (in) (cm)	22-3/4 (58)	22-3/4 (58)	22-3/4 (58)	22-3/4 (58)
Overall Height (in) (cm)	33-1/2 (85)	33-1/2 (85)	33-1/2 (85)	33-1/2 (85)
Overall Width (in) (cm)	50 (127)	64-1/2 (164)	80-1/2 (205)	95 (241)
Overall Depth (in) (cm)	28-1/2 (72)	28-1/2 (72)	28-1/2 (72)	28-1/2 (72)
Gross Cubage (CuFt) (L)	14.8 (419)	20.1 (569)	26 (736)	31.3 (886)
Number of Dividers	3	4	5	6
Condensing Unit Size	3/8 HP	3/8 HP	3/8 HP	3/8 HP
Refrigerant	R-134a	R-134a	R-134a	R-134a
Electrical Characteristics	115/60/1	115/60/1	115/60/1	115/60/1
Cord and Plug Furnished	Yes	Yes	Yes	Yes
NEMA Plug Configuration	5-15P	5-15P	5-15P	5-15P
Total Amp Draw	6.1	6.1	6.1	6.1
12 oz. Can Capacity	857	1191	1575	1893
12 oz. Bottle Capacity	377	539	715	877

Specifications subject to change without notice.

* Floor drain connection exits the rear of the cabinet condensing unit compartment.