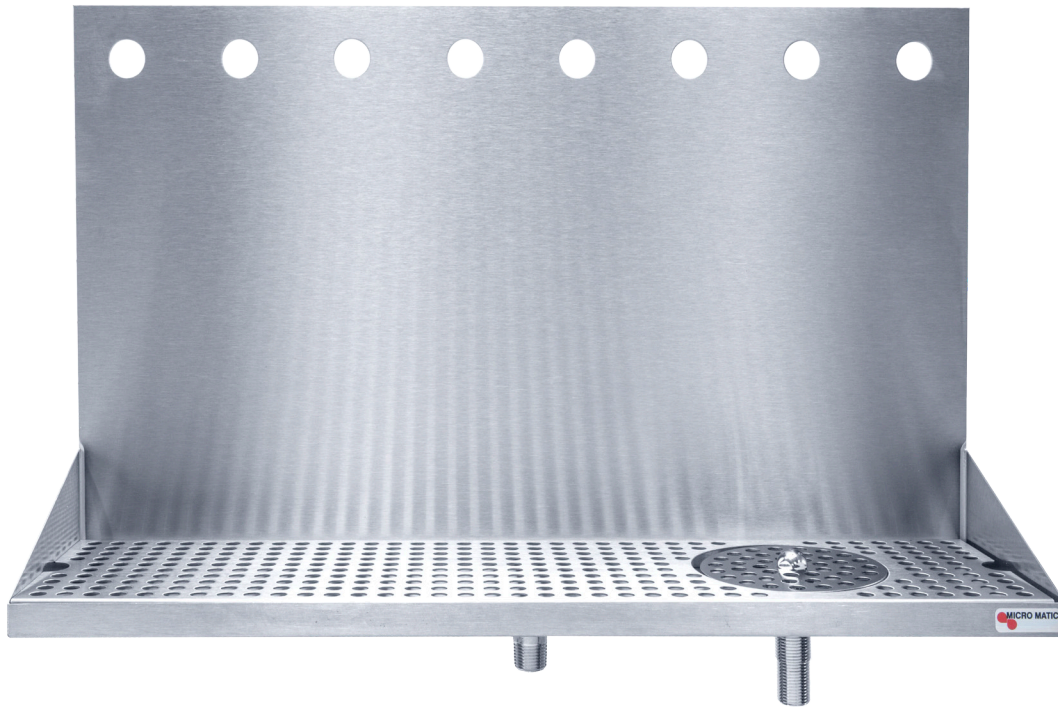




## DRIP TRAY


### WALL MOUNT 24" WITH GLASS RINSER

- Add European style while creating dispense excitement
- Condition the glass before pouring – invert glass, push down on sprayer for cold water rinsing
- Easy installation: beverage shanks mount through and secure tray to wall
- Welded corners, finished smooth for safety and appearance



#### **DP-322ELD-8GR**

Brushed Stainless Steel

 Glass rinser  
assembly only.

[www.micromatic.com](http://www.micromatic.com) • 1 (866) 327-4159

WALL MOUNT WITH GLASS RINSER

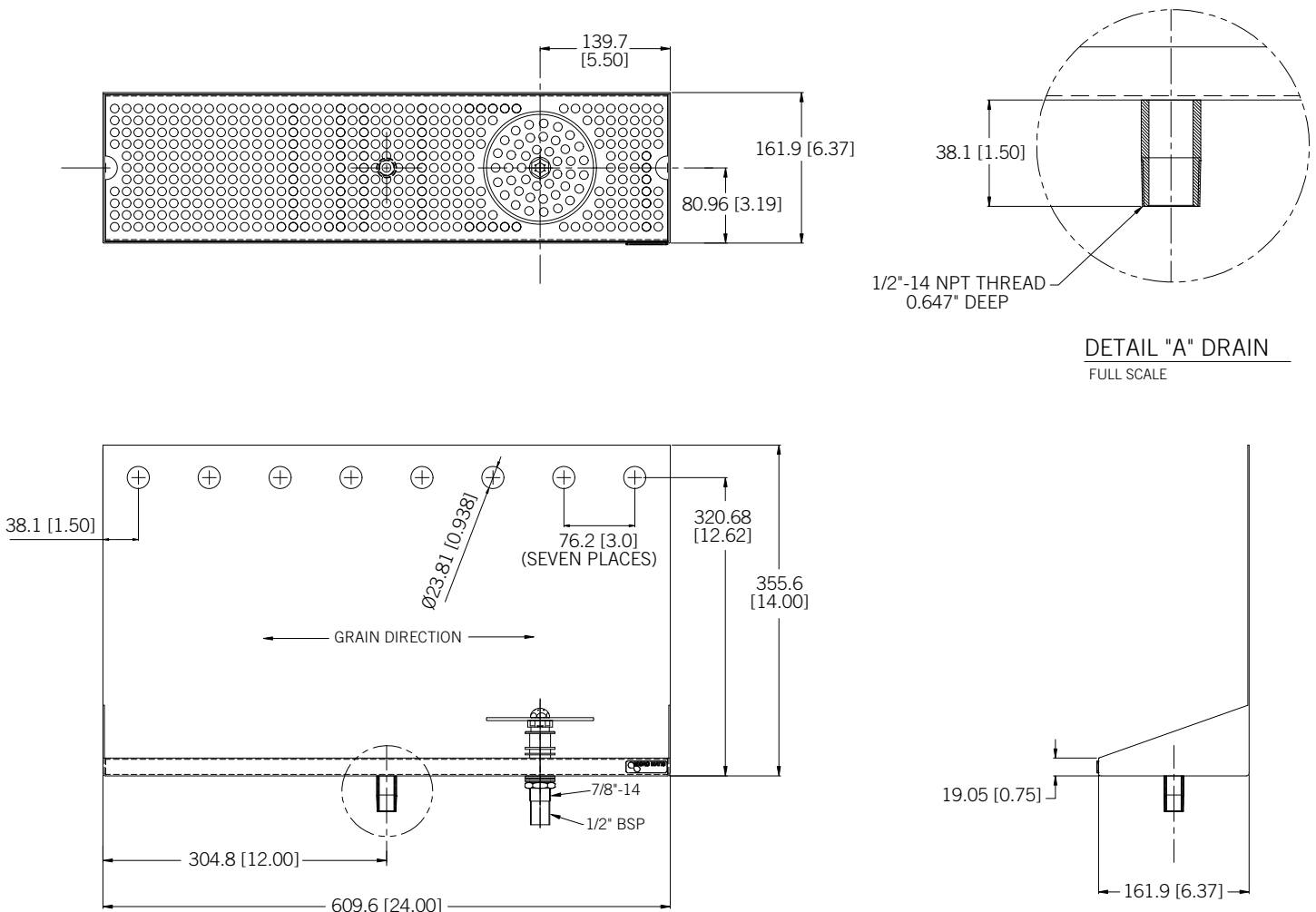
Job Number: \_\_\_\_\_ Location: \_\_\_\_\_

Part No.	Dimensions	Description	Shipping Weight
 DP-322ELD-8GR	24" Width	8 Holes	TBD

## Rinser Water Inlet Installation

- Always check local plumbing codes first.
- Install in-line water regulator set at 15 PSI from the street water supply (no greater, perfect operating pressure).
- Install in-line one way check valve from the street water supply (prevents pressure drop which can cause leaking).
- Install in-line shutoff for the rinser system from the street water supply (this must be turned off nightly).
- If teed into soda system make sure system can handle the increased water demand. Have plumber install a 45° 1/2" O.D. barb for the drains if line is not hard plumbed into the system.
- Install a shutoff for the rinser water supply if line is not hard plumbed into the system.

## Dimensions



Toll-Free: 1-866-327-4159  
[www.micromatic.com](http://www.micromatic.com)

### West

19791 Bahama St.  
Northridge, CA 91324  
Tel. (818) 701-9765  
Fax. (818) 701-9844

### Central

10726 North Second St.  
Machesney Park, IL 61115  
Tel. (815) 968-7557  
Fax. (815) 968-0363

### Southeast

15111 Dispense Ln.  
Brooksville, FL 34604  
Tel. (352) 799-6331  
Fax. (352) 796-2429

### Northeast

4601 Saucon Creek Rd.  
Center Valley, PA 18034  
Tel. (610) 625-4464  
Fax. (610) 625-4466