

DRIVE-THROUGH WINDOW AIR CURTAIN:

The 2-Go Pro air curtain is the newest addition to Curtron Products' complete air curtain line.

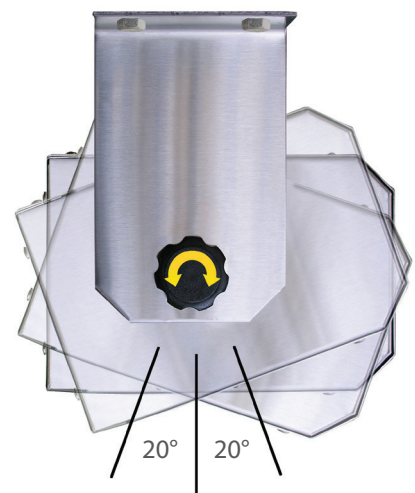
The variable speed, 107 W motor is **EXTREMELY QUIET**, so it won't impede drive-through attendants' ability to hear customers' orders - **you won't even notice it's on!**

- Blocks harmful carbon monoxide fumes found in car exhaust from entering through the window.
- Protects employees from inclement weather and flying insects on drive-through windows 24" wide and up to 42" in height.
- Lowers energy costs by preventing heated or conditioned air from escaping through the often-open window.
- Extremely easy to install, plus the adjustable mounting brackets allow operators to adjust the air discharge by $\pm 20^\circ$.
- The outer case is constructed of heavy duty 304 stainless steel and the unit has corrosion resistant steel blower housing with aluminum tangential blower wheels.
- Available in both electric heated (DT-24-EH) and unheated (DT-24) units.



DT-24-EH

DT-24



ADJUST AIR DISCHARGE BY $\pm 20^\circ$

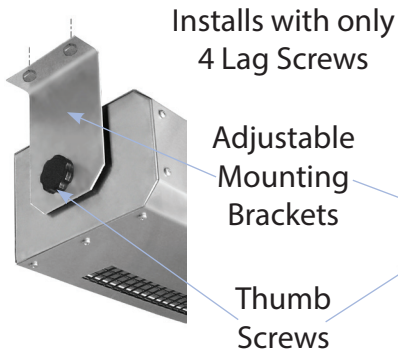
ceiling mounting illustrated

EASY TO INSTALL

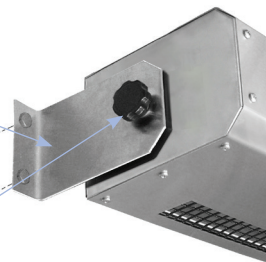
Installation is extremely simple. The adjustable mounting brackets connect to the stainless steel casing with thumb screws, allowing for either wall or ceiling mounting, and only four $\frac{5}{16}$ " lag screws are required. Once the unit is mounted, simply plug it in to a properly grounded, 15 amp, 120 volt outlet.



CEILING MOUNT

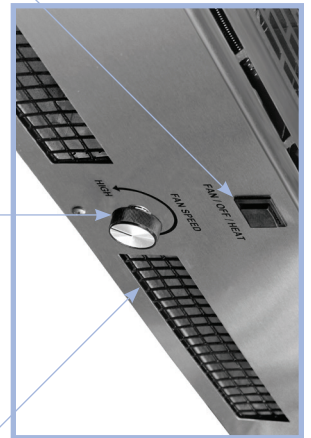


WALL MOUNT



Fan/Off/Heat
Switch
DT-24-EH only

Fan Speed
Adjustment



Air Discharge

The Fan/Off/Heat switch, found only on the DT-24-EH, is a rocker switch. The Fan Speed Adjustment control is a rotating rheostat.

SPECIFICATION INFORMATION

| | DT-24 |
|---------------------------|---------|
| Nozzle Width ¹ | 24" |
| Avg FPM at Nozzle | 1653 |
| CFM at Nozzle | 363 |
| Motors | 1 |
| Watts | 107 |
| Amp Draw (Unheated) | 1.7 |
| Weight (Unheated) | 13 lbs. |
| Heater kW | 1.2 |
| Temp Rise (F) | 10.6° |
| Amp Draw (Heated) | 11.2 |
| Weight (Heated) | 21 lbs. |
| Sound Level ² | 50 dBA |

¹ Nozzle width is equal to the opening width.

² Sound level measured 10' from the unit in a free field based on a one motor unit.

