

Champion®

The Dishwashing Machine Specialists

Project _____
Item No. _____
Quantity _____

STANDARD FEATURES

- **Ventless Heat Recovery**
- **NEW Factory authorized startup**
- **Exclusive** Cold Water Feed Only!
- **NEW Exclusive** Built-in booster configured for 70° Rise
- Field convertible from straight to corner operation
- Dual NSF listed as both a dishwasher and potwasher
- Rinse Sentry – ensures 180°F final rinse
- Auto start – starts unit when hood is closed
- Single point electrical connection
- High efficiency 2 HP pump
- Up to 40 racks per hour
- Self draining pump
- Automatic tank fill
- Detergent/chemical connections
- Interchangeable upper and lower spray arms
- Automatic drain valve – drains wash tank when power is off
- Bottom mounted digital controls
- PRV (Mounted Pressure Reducing Valve)
- Standard and Heavy Duty wash cycles
- 4 selectable cycles
- 27" [686mm] extended clearance

DH5000T-VHR

DH5000T-VHR High Temperature
Hood-type Dishwashing Machine



DH5000T-VHR HOOD-TYPE



OPTIONS & ACCESSORIES

- ☐ Drain Water Tempering Kit
- ☐ Door interlock – locks door closed during the vent fan cycle
- ☐ Single phase option
- ☐ Racks
 - ☐ Peg
 - ☐ Flat
 - ☐ Sheet Pan rack
- ☐ Corner operation splash baffle
- ☐ **NEW** Champion ION scale prevention system

SPECIFIER STATEMENT

Specified unit will be Champion model DH5000T-VHR high temperature hood-type dishwashing machine.

Features sloped hood, electronic controls, Rinse Sentry, Auto start, interchangeable stainless steel wash and rinse arms, up to 60 racks/hr., .85 US gals [3.37 liters, 0.74 imp. gals]/rack. 1 year parts and labor warranty.

Champion Industries, Inc.
3765 Champion Blvd., Winston-Salem, NC 27105
Tel: 336/661-1556 Fax: 336/661-1979

www.championindustries.com

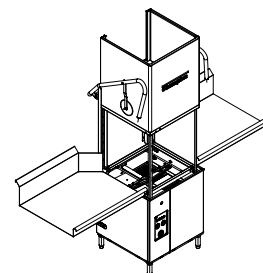
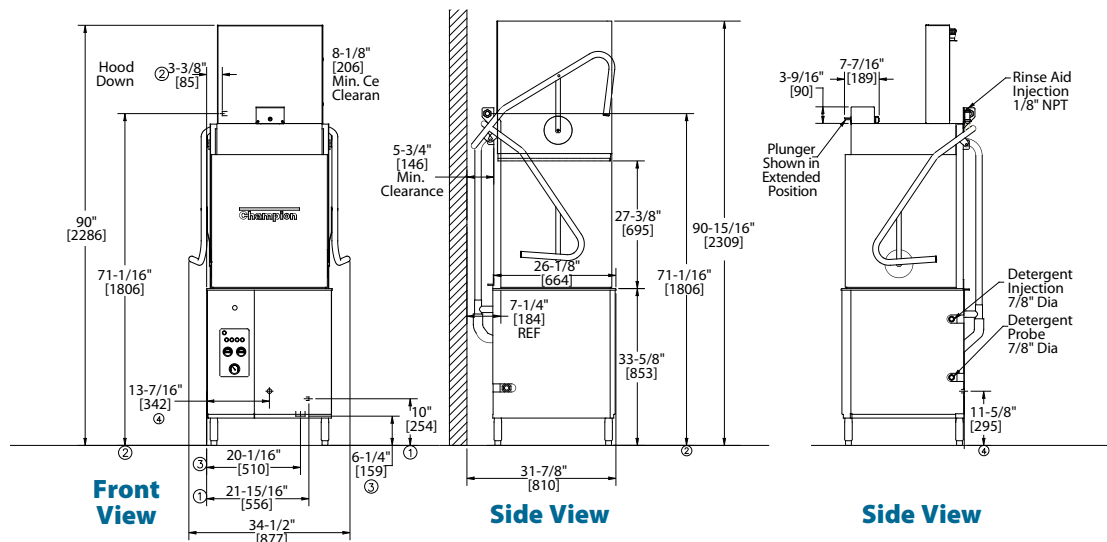
DH5000T-VHR

DH5000T-VHR High Temperature
Hood-type Dishwashing Machine

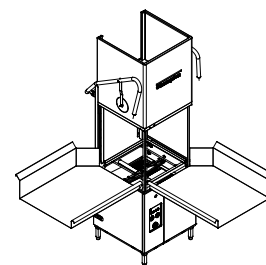
Champion®
The Dishwashing Machine Specialists

Shipping weight crated: 350 lbs.

Dimensions shown in inches and [mm]

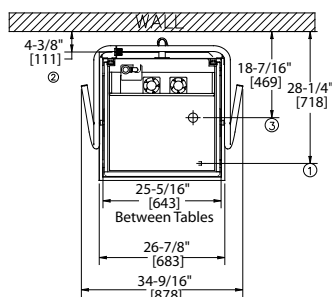
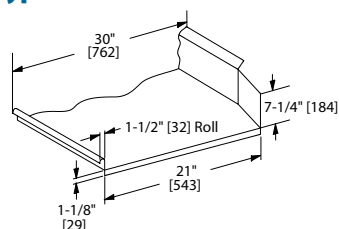


Straight Thru Configuration



Corner Configuration

Typical Table Construction



Plan View

For standard machine dimensions see DH5000 drawing

Utilities

1 Electrical	Machine Connection (See Electrical Box)
2 Cold Water	3/4" NPT Cold Water 70°F [21°C] 40 - 45 PSI (machine operates at 20 - 22)
3 Drain	2" [51mm] OD Machine Drain Connection 15 GPM max flow

Warning: Plumbing, electrical connections should be made by qualified personnel who will observe all the applicable plumbing, sanitary and safety codes and the National Electrical Code.

Machine and Built-in 70°F Rise Booster

Voltage	Rated Amps	Minimum Supply Ckt. Conductor Ampacity	Maximum Overcurrent Protective Device
208-240/60/1	83-95	125	125
208-240/60/3	49-56	60	60
460-480/60/3	24-24	30	30

SPECIFICATIONS

Capacities

Racks per hr.	40
Wash tank (gal.)	9.5
[liters/imp gal.]	[36/7.9]

Motor horsepower

2 HP

Water consumption

Gal. per hr. (max. use)	32
[liters/imp gal.]	[121/26.6]
Gal. per rack (dishwasher)	0.85
[liters/imp gal.]	[3.2/0.7]
Gal. per rack (pot & pan washer)	1.18
[liters/imp gal.]	[4.5/0.98]

Temperature °F

Wash	150/66
Rinse	180/82

Heating

Tank heat, electric	5.2 kW
Electric Booster	10 kW

Time cycle in seconds

	Dishwasher Mode		Pot/Pan Mode	
Wash	35	65	214	334
Rinse	10	10	15	15
Sanitary Dwell	15	15	11	11
Vent Fan	30	30	30	30
Total cycle	90	120	270	390

Due to an ongoing value analysis program at Champion, specifications contained in this catalog are subject to change without notice.

Champion Industries, Inc.
3765 Champion Blvd., Winston-Salem, NC 27105
Tel: 336/661-1556 Fax: 336/661-1979

www.championindustries.com

an Ali Group Company



The Spirit of Excellence