

BUNN®

BUNN® refresh®

Cold Water Dispenser



Purity achieved with 3M water filter certified to reduce cyst, lead, particulates, chloramines, chlorine taste and odor and up to 99.99% of common water-borne bacteria.¹

Unique, in-line carbonator takes the place of large, internal carbonated water storage tank providing the delicate balance of purified, cold water and "light" carbonation for longer lasting sparkling water and optimal absorption of flavors and ingredients.

Ice bank cooling technology and recirculation loop ensures cold water is continuously circulating for consistent low casual drink temperature of 40°F water.

The perfect instrument to incorporate flavor infusions and natural ingredients for crafted beverages.

Compatible with external bulk, CO₂ systems or smaller, internal tanks

¹As tested with E.Coli ATCC (11229) by manufacturer's

for more information, visit BUNN.com

BUNN®

BUNN® refresh®

Still and Sparkling cold water dispenser
delivers purified, premium water.

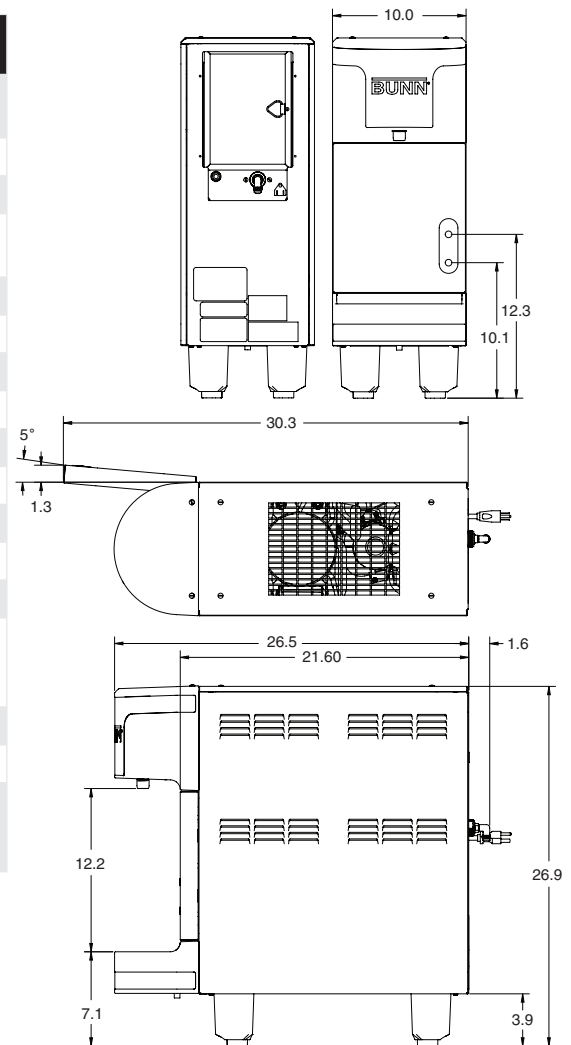
10" W x 26.5" D x 27" H
(254mm W x 673.1mm D x 685.8mm H)

Capacity: 5.6 gallons before exceeding 41°F
(75°F incoming water)



Technical Data

COMPOSITION OF WATER FILTRATION SYSTEM	4-Stage Filtration: Sediment, Lead, Anti-microbial, Activated Carbon rated up to 5,000 gallons
WATER FILTER FLOW RATE	Up to 1.5 gpm
MATERIAL	Metal Housing and 304 Grade Stainless Steel
MAXIMUM CAPACITY	5.6 Gallons per hour before exceeding 41°F (75°F incoming water)
FLOW RATE	1.5oz per second
CARBONATION LEVEL	3.1 +/- .1 Carbonation Level
VENTILATION	6" Back and top, 4" sides ventilated
MINIMUM WATER INLET PRESSURE (DYNAMIC)	30 PSI
MAXIMUM WATER INLET PRESSURE	100 PSI
WATER SUPPLY CONNECTION	3/8" MFL
MINIMUM CO2 INLET PRESSURE	100 PSI
MAXIMUM CO2 INLET PRESSURE	120 PSI
HIGH PRESSURE CO2 REGULATOR	120 PSI Maximum Output
CO2 CYLINDER (not provided by BUNN)	Sold separately, an external bulk cylinder is connected with a 1/4" MFL and pressure regulator (not included) to the refrigeration unit.
ICE BANK	8 lbs
FULL ICE BANK CAPACITY	Approximately 4 hours
AIR FILTER	Every 6 months or as needed, remove and blow through with compressed air or rinse under water to remove any dirt and debris.



DESCRIPTION				CAPACITY	ELECTRICAL							AGENCY	
Product #	Model	Finish	Temperature Setting °F	Gal/hr	Volts	Amps	Watts	Hertz	Phase	Plug	Cord Attached	Shipping Weight	Listing
45800.0000	Push Button	Black/SS	40	5.6	120	4.5	540	60	1	NEMA 5-15p	Yes	103lbs	NSF UL
45800.0001	Portion Control	Black/SS	40	5.6	120	4.5	540	60	1	NEMA 5-15p	Yes	103lbs	NSF UL

Plumbing: 30-100 PSI. Machine supplied with 3/8" male flare fitting.