



BEVERAGE-AIR

Project: _____

AIA#

Item: _____

Location: _____

SIS#

Approved: _____

MMR MARKETMAX REFRIGERATOR

MMR72HC White Hinged Triple Glass Door

Hydrocarbon Series

MODELS:

MMR72HC-1-W

MMR72HC Hinged Glass Door: Merchandiser Series



MMR72-1-W

**3 Year Parts/Labor Warranty
Additional 2 Year Compressor Warranty**

CABINET CONSTRUCTION

- Exterior finish is heavy duty steel with a white baked on durable coating
- Heavy duty interior construction includes white coated steel walls
- Modern one-piece grille
- Full electronic control
- Refrigerator have double pane lowE argon filled glass doors
- 120° stay open door feature, with automatic stay open feature
- Snap-in gaskets, easy to remove for cleaning or replacement
- Field reversible doors
- LED lighting, standard
- Five (5) heavy duty epoxy coated wire shelves per section
- Four (4) shelf clips included per shelf
- Anti-microbial door handles
- Brightly lighted sign panel
- Whisper quiet refrigeration system
- Self-contained bottom mount refrigeration system
- Refrigerator product temperatures from 36°F to 38°F

OPTIONS & ACCESSORIES

- Black or stainless steel exterior option
- Black or stainless steel interior option
- Electronic lock models
- Wine temperature models
- Wine racks
- 6" legs
- 3" or 6" Casters
- Door locks
- Custom signage & decals
- Remote

REFRIGERATION SYSTEM

- Refrigeration system uses R290 refrigerant to comply with all environmental concerns
- Automatic, non-electric evaporator
- Epoxy coated evaporator coil



3779 Champion Blvd., Winston-Salem, NC 27105
1-888-845-9800 Fax: 1-336-245-6453
Beverage-Air.com sales@bevair.com

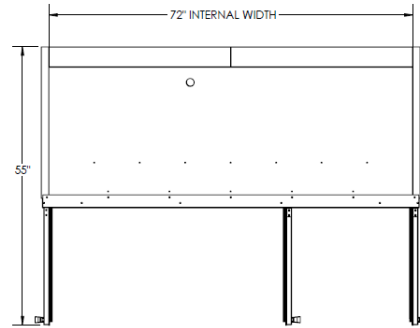


BEVERAGE-AIR

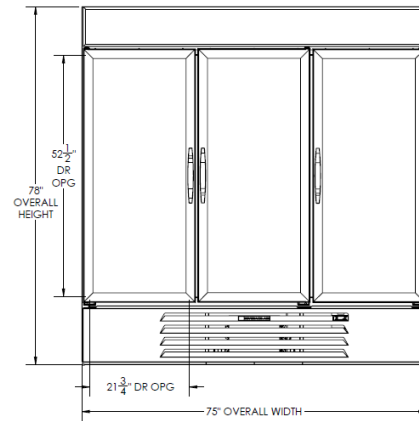
MMR Refrigerator Triple Glass Door Models: MMR72HC-1-W

MODEL	MMR72HC-1-W
EXTERNAL DIMENSIONAL DATA	
Width Overall	75"
Depth Overall with Handle	33 1/2"
Height Overall	78"
Number of Doors	3
Depth With Door Open 90°	55"
Door Opening (inches)	21 3/4" x 52 1/2"
Shelf Area	499 55/64"
INTERNAL DIMENSIONAL DATA	
NET Capacity (cubic ft.)	68.93
Internal Width Overall (in)	72"
Internal Depth Overall (in)	26"
Internal Height Overall (in)	61 5/8"
Internal Height Useable (in)	53"
Number of Shelves	15
ELECTRICAL DATA	
Full Load Amperes 115/60/1	6.2
REFRIGERATION DATA	
Horsepower	1/2
Capacity (BTU/Hr)*	2808
WEIGHT DATA	
Gross Weight (Crated lbs)	732 lbs
Height - Crated	85"
Width - Crated	77"
Depth - Crated	36"

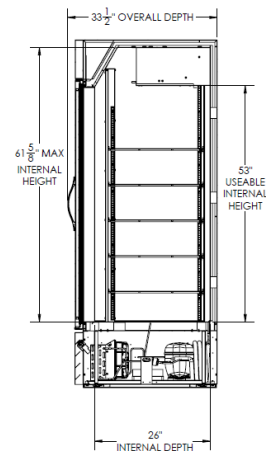
Model Views



Plan View



Elevation View



Side View

ELECTRICAL CONNECTION



115/60/1
NEMA-5-15P

Units pre-wired at
factory and include 8'
long cord and plug set.



an Ali Group Company



The Spirit of Excellence

3779 Champion Blvd., Winston-Salem, NC 27105
1-888-845-9800 Fax: 1-336-245-6453
Beverage-Air.com sales@bevair.com