



# BEVERAGE-AIR

Project: \_\_\_\_\_

AIA#

Item: \_\_\_\_\_

Location: \_\_\_\_\_

SIS#

Approved: \_\_\_\_\_

## LV LUMAVUE™ MERCHANDISERS

LV38HC Black Sliding Glass Door Model  
Hydrocarbon Series

MODELS:  
LV38HC-1-B



LV38HC-1-B

**3 Year Parts/Labor Warranty**  
**Additional 2 Year Compressor Warranty**

### CABINET CONSTRUCTION

- Standard cabinet exterior finish is heavy duty steel with a Black baked on durable coating
- Heavy duty interior construction includes white coated steel walls
- Full electronic control
- Modern one piece grille
- Double pane lowE argon filled glass doors feature inside and outside panes that are tempered for added safety
- Sliding glass door models have black frames regardless of exterior finish
- Hold open feature is standard
- Five (5) epoxy coated shelves per section, standard
- Brightly lighted sign panel
- LED lighting
- Whisper quiet refrigeration system
- Maintains product temperatures between 32°-40°F

### OPTIONS & ACCESSORIES

- White or stainless steel exterior
- Black or stainless steel interior
- Door locks
- Wine rack
- Wine temperature model available
- Extra shelves
- 3", 6" Casters or 6" legs
- Remote
- Gravity flo kit
- Custom graphics and signage

### REFRIGERATION SYSTEM

- Refrigeration system uses R290 refrigerant to comply with all environmental concerns
- Automatic, non-electric evaporator
- Epoxy coated evaporator coil

LV38HC LumaVue™ Merchandiser: Sliding Glass Doors



3779 Champion Blvd., Winston-Salem, NC 27105  
1-888-845-9800 Fax: 1-336-245-6453  
Beverage-Air.com sales@bevair.com



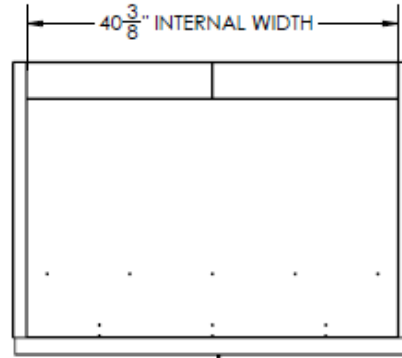
# BEVERAGE-AIR

## Glass Door Merchandisers - Sliding Door Models

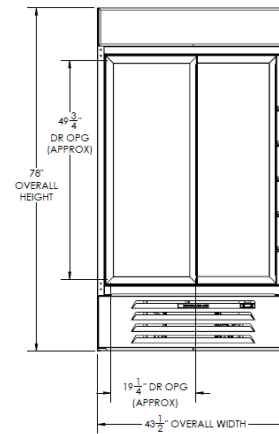
Models: LV38HC-1-B

MODEL	LV38HC-1-B
<b>EXTERNAL DIMENSIONAL DATA</b>	
Width Overall	43 1/2"
Depth Overall	32 1/4"
Height Overall	78"
Number of Doors	2
Shelf Area (sq. in)	408 1/2"
<b>INTERNAL DIMENSIONAL DATA</b>	
NET Capacity (cubic ft.)	35.37
Internal Width Overall (in)	40 3/8"
Internal Depth Overall (in)	26"
Internal Height Overall (in)	61 5/8"
Internal Height Useable (in)	53"
Number of Shelves	10
<b>ELECTRICAL DATA</b>	
Full Load Amperes 115/60/1	5
<b>REFRIGERATION DATA</b>	
Horsepower	1/3
Capacity (BTU/Hr)*	2392
<b>WEIGHT DATA</b>	
Gross Weight (Crated lbs)	502 lbs
Height - Crated	85"
Width - Crated	46"
Depth - Crated	35"

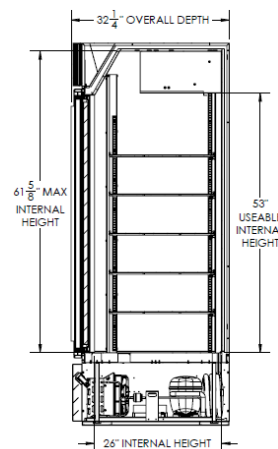
### Model Views



Plan View



Elevation View



Side View

### ELECTRICAL CONNECTION



115/60/1  
NEMA-5-15P

Units pre-wired at factory and include 8' long cord and plug set.



an Ali Group Company



The Spirit of Excellence

3779 Champion Blvd., Winston-Salem, NC 27105  
1-888-845-9800 Fax: 1-336-245-6453  
Beverage-Air.com sales@bevair.com