



BEVERAGE-AIR

Project: _____

AIA#

Item: _____

Location: _____

SIS#

Approved: _____

LV LUMAVUE™ MERCHANDISERS

LV17HC Black Sliding Glass Door Model
Hydrocarbon Series

MODELS:
LV17HC-1-B



LV17HC-1-B

3 Year Parts/Labor Warranty
Additional 2 Year Compressor Warranty

CABINET CONSTRUCTION

- Standard cabinet exterior finish is heavy duty steel with a white baked on durable coating
- Heavy duty interior construction includes white coated steel walls
- Full electronic control
- Modern one piece grille
- Two sliding glass doors
- Sliding glass door models have black frames regardless of exterior finish
- Door lock standard
- Hold open feature standard
- Four (4) epoxy coated shelves standard
- LED lighting
- Whisper quiet refrigeration system
- Maintains product temperatures between 32°-40°F

OPTIONS & ACCESSORIES

- White or stainless steel exterior
- Black or stainless steel interior
- Wine temperature model available
- Extra shelves
- 3", 6" Casters or 6" legs
- Remote option

REFRIGERATION SYSTEM

- Refrigeration system uses R290 refrigerant to comply with all environmental concerns
- Automatic, non-electric evaporator
- Epoxy coated evaporator coil

LV17HC LumaVue™ Merchandiser: Sliding Glass Doors



3779 Champion Blvd., Winston-Salem, NC 27105
1-888-845-9800 Fax: 1-336-245-6453
Beverage-Air.com sales@bevair.com



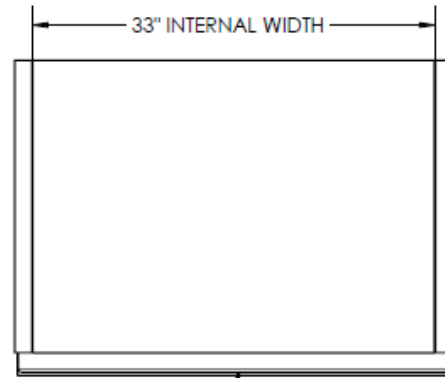
BEVERAGE-AIR

MODEL	LV17HC-1-B
EXTERNAL DIMENSIONAL DATA	
Width Overall	36"
Depth Overall	26 1/8"
Height Overall	60"
Number of Doors	2
Door Opening (in)	15 1/4" x 43 3/4"
INTERNAL DIMENSIONAL DATA	
NET Capacity (cubic ft.)	18.6
Internal Width Overall (in)	33"
Internal Depth Overall (in)	20"
Internal Height Overall (in)	46 3/4"
Internal Height Useable (in)	42"
Number of Shelves	4
ELECTRICAL DATA	
Full Load Amperes 115/60/1	2
REFRIGERATION DATA	
Horsepower	1/4
Capacity (BTU/Hr)*	1480
WEIGHT DATA	
Gross Weight (Crated lbs)	315 lbs
Height - Crated	66"
Width - Crated	39"
Depth - Crated	61"

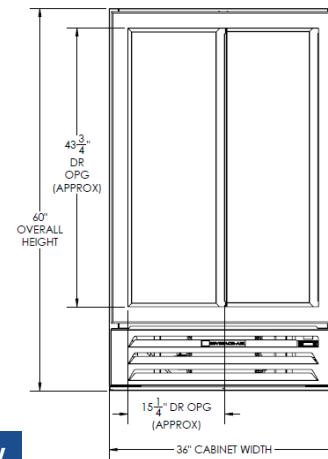
Merchandisers - Sliding Glass Door

Models: LV17HC-1-B

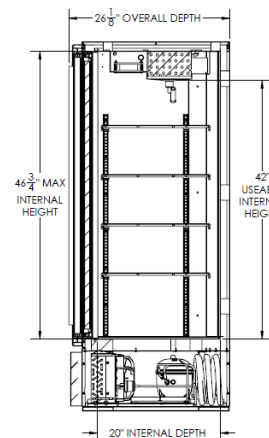
Model Views



Plan View



Elevation View



Side View

ELECTRICAL CONNECTION



115/60/1
NEMA-5-15P

Units pre-wired at factory and include 8' long cord and plug set.



an Ali Group Company



The Spirit of Excellence

3779 Champion Blvd., Winston-Salem, NC 27105
1-888-845-9800 Fax: 1-336-245-6453
Beverage-Air.com sales@bevair.com