



BEVERAGE-AIR

Project: _____	AIA# _____
Item: _____	
Location: _____	SIS# _____
Approved: _____	

LUMAVUE™ MERCHANDISERS

LV15HC White Sliding Glass Door Model
Hydrocarbon Series

MODELS:
LV15HC-1-W



LV15HC-1-W

3 Year Parts/Labor Warranty
Additional 2 Year Compressor Warranty

CABINET CONSTRUCTION

- Standard cabinet exterior finish is heavy duty steel with a white baked on durable coating
- Heavy duty interior construction includes white coated steel walls
- Full electronic control
- Modern one piece grille
- Two sliding glass doors
- Sliding glass door models have black frames regardless of exterior finish
- Hold open feature is standard
- Three (3) epoxy coated shelves standard
- LED lighting
- Maintains product temperatures between 32°-40°F
- Door locks standard

OPTIONS & ACCESSORIES

- ☐ Black or stainless steel exterior
- ☐ Black or stainless steel interior
- ☐ Wine temperature model available
- ☐ Extra shelves
- ☐ 3", 6" Casters or 6" legs
- ☐ Remote

REFRIGERATION SYSTEM

- Refrigeration system uses R290 refrigerant to comply with all environmental concerns
- Automatic, non-electric evaporator
- Epoxy coated evaporator coil

LV15HC LumaVue™ Merchandiser: Sliding Glass Doors



3779 Champion Blvd., Winston-Salem, NC 27105
1-888-845-9800 Fax: 1-336-245-6453
Beverage-Air.com sales@bevair.com

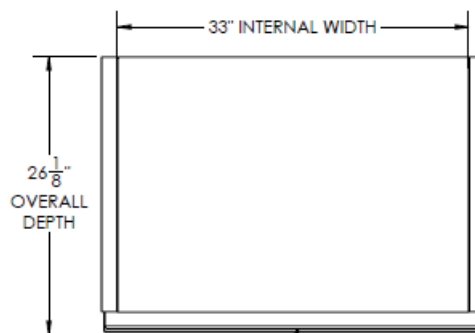


BEVERAGE-AIR

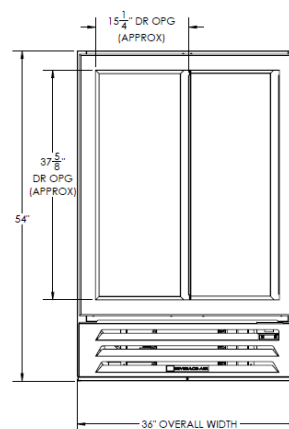
MODEL	LV15HC-1-W
EXTERNAL DIMENSIONAL DATA	
Width Overall	36"
Height Overall	54"
Number of Doors	2
Door Opening (in)	37 5/8" x 15 1/4" (Approximate)
INTERNAL DIMENSIONAL DATA	
NET Capacity (cubic ft.)	15.8
Internal Width Overall (in)	33"
Internal Depth Overall (in)	19 7/8"
Internal Height Overall (in)	40 3/4"
Internal Height Useable (in)	36"
Number of Shelves	3
ELECTRICAL DATA	
Full Load Amperes 115/60/1	2
REFRIGERATION DATA	
Horsepower	1/4
Capacity (BTU/Hr)*	1480
WEIGHT DATA	
Gross Weight (Crated lbs)	284 lbs
Height - Crated	60"
Width - Crated	39"
Depth - Crated	31"

Glass Door Merchandisers - Sliding Door Models Models: LV15HC-1-W

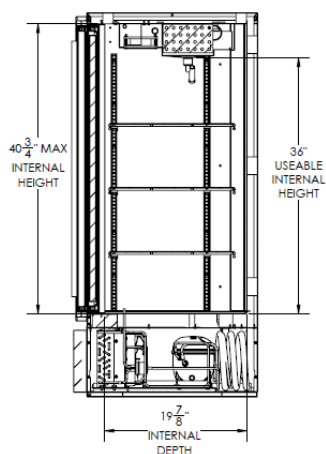
Model Views



Plan View



Elevation View



Side View

ELECTRICAL CONNECTION

Units pre-wired at factory and include 8' long cord and plug set.



115/60/1
NEMA-5-15P



an Ali Group Company



The Spirit of Excellence

3779 Champion Blvd., Winston-Salem, NC 27105
1-888-845-9800 Fax: 1-336-245-6453
Beverage-Air.com sales@bevair.com