



BEVERAGE-AIR

Project: _____	AIA# _____
Item: _____	
Location: _____	SIS# _____
Approved: _____	

DW HORIZONTAL BOTTLE COOLERS

DW94HC Stainless Steel Deep Well Series
Hydrocarbon Series

MODEL:
DW94HC-S

DW94HC Deep Well Series: Horizontal Bottle Coolers

3 Year Parts/Labor Warranty
Additional 2 Year Compressor Warranty

CABINET CONSTRUCTION



DW94HC-S

- Stainless steel exterior
- Interior is galvanized with stainless steel floor
- Full electronic control
- Tops include easy glide, stainless steel lids and stainless steel counter top
- Countertop with integral glass stops
- Three (3) Epoxy coated adjustable wire dividers
- Bottle cap & cap catcher standard
- Forced air refrigeration system holds product between 36° - 40°F
- Constructed with high cooling RPM fans to provide fast cooling

OPTIONS & ACCESSORIES

- ☐ Black exterior
- ☐ Stainless steel interior
- ☐ Lid Locks
- ☐ 3" casters or 6" Adjustable leg with plate
- ☐ Wine temperature models available
- ☐ Wine temperature 40°-60°F

REFRIGERATION SYSTEM

- Refrigerant is R290 to comply with all environmental safety concerns
- Self-defrosting evaporator
- Automatic, non-electric evaporator
- Evaporator coil is coated in



3779 Champion Blvd., Winston-Salem, NC 27105
1-888-845-9800 Fax: 1-336-245-6453
Beverage-Air.com sales@bevair.com



BEVERAGE-AIR

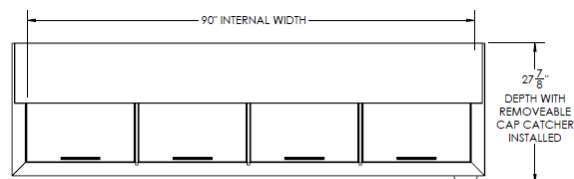
MODEL	DW94HC-S
EXTERNAL DIMENSIONAL DATA	
Width Overall	95"
Depth Overall	26 5/8"
Depth Overall with Cap Catcher	27 7/8"
Height Overall	33 3/4"
Number of Lids	4
INTERNAL DIMENSIONAL DATA	
NET Capacity (cubic ft.)	28.63
Internal Width Overall (in)	91
Internal Depth Overall (in)	22 3/4"
Internal Height Overall at Step (in)	16 3/4"
Internal Height Overall	26 3/4"
Number of Dividers	6
12 oz. Bottle Capacity	39 Cases
12 oz. Can Capacity	55 3/4 Cases
ELECTRICAL DATA	
Full Load Amperes 115/60/1	2.5
REFRIGERATION DATA	
Horsepower	1/4
Capacity (BTU/Hr)*	1708
WEIGHT DATA	
Gross Weight (Crated lbs)	480 lbs
Height - Crated	40"
Width - Crated	98"
Depth - Crated	29 1/2"

Horizontal Bottle Coolers

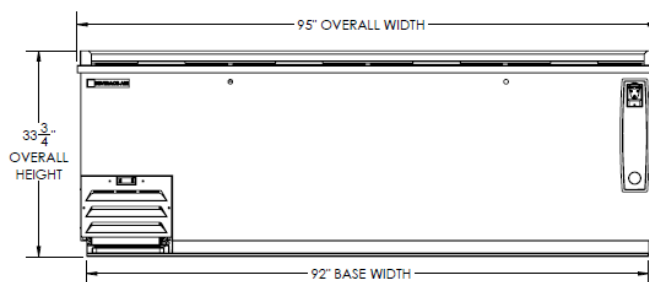
Deep Well Models

Models: DW94HC-S

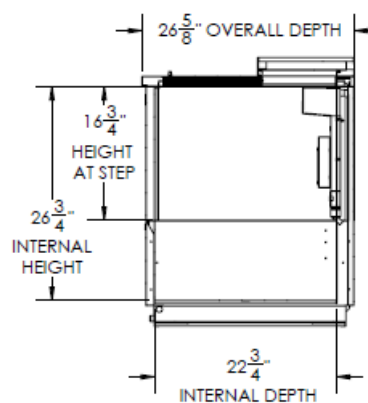
Model Views



Plan View



Elevation View



Side View

ELECTRICAL CONNECTION

Units pre-wired at factory and include 8' long cord and plug set.



115/60/1
NEMA-5-15P

an Ali Group Company



The Spirit of Excellence

3779 Champion Blvd., Winston-Salem, NC 27105
1-888-845-9800 Fax: 1-336-245-6453
Beverage-Air.com sales@bevair.com