

PLEASE READ AND SAVE THESE INSTRUCTIONS



AIR SCRUBBER
OWNER'S MANUAL
X-2380, X-2480A, X-2580



XPOWER MANUFACTURE, INC
240 Clary Avenue
San Gabriel, CA 91776, USA
Tel: 626-285-3301, Fax: 626-285-3302
www.xpower.com

Index

Introduction	2
Safety Instructions	3
Operation	4~5
Parts List	5~6
Specifications	7
Filtration Systems	8~9
Maintenance	9-15
Washable Nylon Pre-Filters	10
Pleated Media Pre-Filter	11
Washable Purifying Filter Care	12
Activated Carbon Filter Care.....	13
HEPA Filter Care.....	14
Filter Replacement	15
Troubleshooting	16
Warranty / Service	17
Registration Form	18

Introduction

XPOWER's unique and highly innovative air scrubber purifying systems create a fresh, clean environment in even difficult areas such as grooming salons. XPOWER 2000 series Air Scrubbers feature an advanced technology 3~4 stage filtration system along with a powerful 1/2 HP high capacity motor for spaces up to 1500 sqft. Enjoy breathing healthier with your XPOWER Professional Air Purification Equipment!

Features:

- 3~4 stage air filtration system
- Only 2.8 amp usage with high airflow capacity from 550 CFM
- 5-Speed Control
- Easy cord wrap design
- Convenient filter change/clean light
- Stackable, compact, and lightweight design
- 2 airflow positions – upright (vertical) or horizontal
- Durable and rugged ABS housing
- 1 year limited warranty



Air Scrubbers can be stacked (up to 5) on their sides for storage. Stacking feature is not secure for transportation.

Safety Instructions

WARNING: IMPORTANT SAFETY PRECAUTIONS! PLEASE READ COMPLETELY BEFORE USING PRODUCT!

When using electrical appliances, basic safety precautions should always be followed to reduce the risk of fire, electric shock, and personal injury, including but not limited to the following:

1. To prevent electric shock, do not operate the unit in standing water. Never plug in or unplug the unit with wet hands or while standing in water.
2. To avoid risk of injury, do not direct air flow at face or body.
3. Use only with GFCI protected receptacles. Please contact a qualified electrician for verification and / or installation of a GFCI receptacle if necessary.
4. Do not operate any unit with a damaged cord or plug. Discard Air Scrubbers or return to an authorized service facility for examination and/or repair.
5. Air Scrubber is an automatically operated device. To reduce the risk of injury, disconnect from power supply before servicing.
6. Do not run cord under carpet. Do not cover cord with throw rugs, runners, or similar coverings. Do not route cord under furniture or appliances. Arrange cord away from traffic area and where it will not be tripped over.
7. Do not allow children to play with or around the Air Scrubbers at any time.
8. Do not move or carry the Air Scrubber while unit is operating.
9. Keep air intakes and exhausts clean at all times. Avoid clogging or blocking to prevent the machine from overheating. Blocking the air intake could result in a fire or electrical hazards.
10. Always place the Air Scrubber on a smooth and level surface for safe operation.
11. Unplug the unit before performing any maintenance, cleaning, or servicing.
12. Any misuse or abuse of this product will void the warranty.

Operation

In order to remove airborne particles from the surrounding environment, XPOWER Air Scrubbers are designed to draw air through a series of filters and deliver the purest air. Each filter stage operates with progressively higher efficiency. The unit removes airborne particles like hair, skin flakes, visible dust, mold spores, pollen, pet dander and miscellaneous debris.

1. XPOWER Air Scrubbers are shipped ready-to-use. Prior to plugging the unit into the power source, inspect completely for any shipping damage.
2. Carefully place the Air Scrubber upright on a stable, flat dry surface.
3. Plug the electrical cord into the power outlet.
4. The unit can be used in 2 different angle positions: vertical and horizontal.
5. Turn the control knob to desired speed and make sure the unit operates normally.
6. To reduce the risk of injury, close supervision is necessary when the machine is used near children. Do not allow children to play with, or around the Air Scrubber at any time.



Filter Clean/Change Indicator Light

The red Filter Clean/Change indicator Light will illuminate when accumulated debris is over-saturated, and filter needs to be cleaned. If the light is still illuminated after the filters are cleaned, the filter(s) possibly need to be replaced.

Daisy Chain for X-2480A

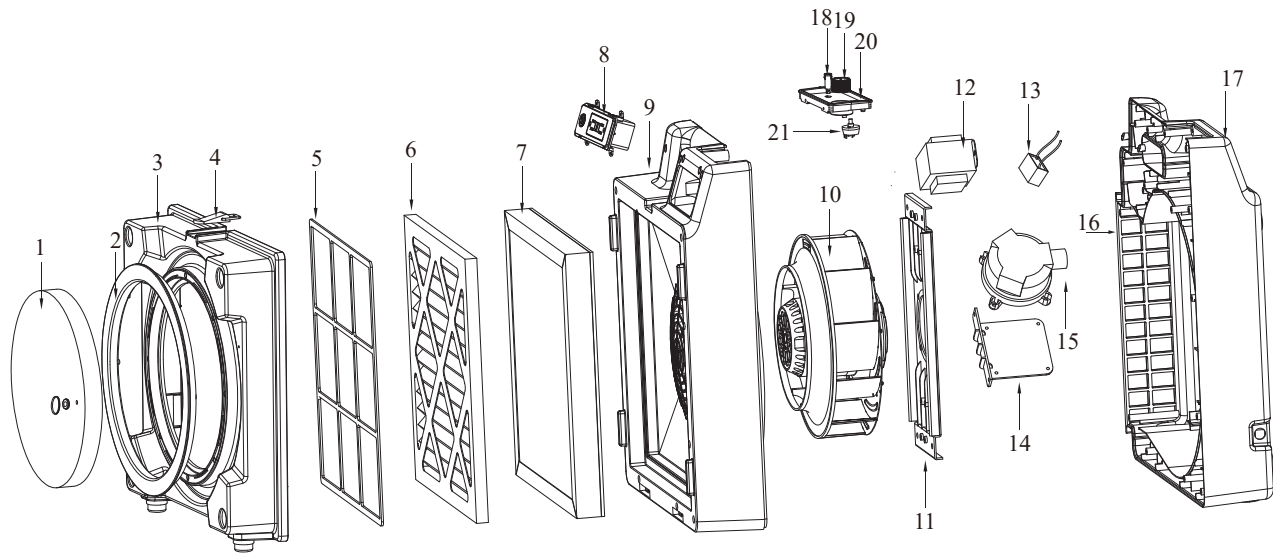
XPOWER X-2480A Air Scrubber is daisy chainable with a low 2.8 amp draw. The 12 amp on-board Circuit Breaker allows two additional 2000 series units or other devices (total additional amperage must be less than 9A) to run on one circuit the same time. If the Auxiliary Outlet overloads (over 12A), the Circuit Breaker will trip. If the Breaker does trip, unplug the units and press the Reset button. Then Plug the units back into the power source and turn on the switch.



Parts List

Item No.	Parts Name	Item No.	Parts Name
1	Removable Air Inlet Foam Cap	2	Air Inlet
3	Inlet Panel	4	Latch
5	13"x13" Nylon Mesh Filter	6	Pleated Media Filter
7	1.4" Thick HEPA Filter	8	GFCI Receptacle
9	Front Housing	10	Motor
11	Motor Bracket	12	Transformer
13	Capacitor	14	Air Valve Bracket
15	Pressure Switch	16	Air Outlet Grill
17	Rear Housing	18	HEPA Filter Clean/Change Light
19	Speed Control Knob	20	Control Panel
21	Switch		

** Actual parts are not limited on this list, contact XPOWER for ordering parts.



Specifications

MODEL NO.	X-2380	X-2580	X-2480A
VOLTAGE / FREQUENCY	115 V / 60 Hz		
POWER	1/2 HP		
AMPERAGE	2.8 Amps (On Highest Speed)		
RATED AIRFLOW	550 CFM		
SPEEDS	5-Speed Control		
UNIT WEIGHT	23 lbs	23.6 lbs	23.6 lbs
UNIT DIMENSIONS (L x W x H)	16.6" x 10.4" x 18.9"		
CORD LENGTH	13 ft. / 18AWG		13 ft. / 14AWG
HOUSING	ABS		
DUCT (AIR OUTLET) SIZES	5" x 10.8"		
FILTRATION SYSTEM	3-STAGE	4-STAGE	3-STAGE
1 ST STAGE FILTER	<u>NFR9</u> - Ø 9" Washable Outer Nylon Mesh Filter		<u>NFS13</u> - 13" x 13" Washable Nylon Mesh Filter
2 ND STAGE FILTER	<u>NFS13</u> - 13" x 13" Washable Nylon Mesh Filter		<u>PF13</u> - 13" x 13" Pleated Media Filter
3 RD STAGE FILTER	<u>WF50</u> - 13" x 13" x 2" Washable Purifying Filter	<u>CF15</u> - 13" x 13" x 0.6" Activated Carbon Filter	<u>HEPA35-33</u> - 13" x 13" x 1.4" HEPA Filter
4 TH STAGE FILTER		<u>HEPA35-33</u> - 13" x 13" x 1.4" HEPA Filter	
DAISY CHAIN	N/A		Yes
FILTER CLEAN/CHANGE LIGHT	Indicates when the filters need to be cleaned or changed		
STACKABLE	Up to 5 units high		
SAFETY CERTIFICATIONS	ETL/CETL		

Filtration Systems (X-2380 and X-2580)



NFR9
Ø 9"
Washable Outer
Nylon Mesh Filter

1st Stage



NFS13
13" x 13"
Washable Inner
Nylon Mesh Filter

2nd Stage

X-2380



WF50
13" x 13" x 1.4"
Washable Purifying Filter

X-2580



CF15
13" x 13" x 0.6"
Activated Carbon Filter

3rd Stage



HEPA35-33
(13" x 13" x 1.4")
HEPA Filter

4th Stage

Filtration System (X-2480A)

1st Stage

NFS13
13" x 13"
Washable Inner
Nylon Mesh Filter



2nd Stage

PF13
(13" x 13")
Pleated Media Filter



3rd Stage

HEPA35-33
(13" x 13" x 1.4")
HEPA Filter



Maintenance

1. To keep the Air Scrubber clean, use a damp cloth to wipe the surface of the housing.
2. Never clean the Air Scrubber unit directly with water (see following pages for proper filter cleaning instructions).
3. When not in use, unplug and store the Air Scrubber in a dry indoor place out of reach of children.
4. Always disconnect the Air Scrubber from its power source before performing any maintenance or cleaning.

Important: Filter Maintenance and Replacement

Basic routine maintenance of filters is required to optimize performance of your air scrubber and extend the life of primary filters.

XPOWER 2000 series air scrubber's filtration systems include easy to clean, washable nylon pre-filters that should be frequently maintained. Monitor filters and clean or change out once they become loaded with particles. The air scrubber begins to reduce airflow and increase pressure drop. Overly loaded filters not only restrict CFM, they can also result in a loss of filtration efficiency. XPOWER Air Scrubbers include on-board pressure sensors that automatically alert the Filter Clean/Change Light when the filters need cleaning. The filter may need to be changed after using for a quite long period.



Loaded Filter

Cleaning of Washable Nylon Pre-Filters

NFR9 & NFS13 - Outer and Inner Nylon Mesh Filters are washable. These Pre-filters will protect the inner filters from larger particles and therefore extend the life and usage of the primary 3rd & 4th Stage filters. Always make sure the Air Scrubber is turned off before removing filters. Before cleaning, remove all debris from both the inner and outer nylon mesh filters, then, rinse with water and lay flat on a clean and dry surface to dry completely before re-installing. The NFR9 and NFS13 filters are used for X-2380 and X-2580 air scrubbers as first two stages. Both filters need to be cleaned frequently, especially for the Outer Nylon Mesh Filter NFR9. NFS13 is also used for X-2480A as the first stage filter.

Follow the steps to clean nylon pre-filter(s):

- Turn off the machine before cleaning the mesh filter(s) (Fig. 1)
- Remove particles from nylon filter(s) before rinsing with water (Fig. 2)
- Let filter(s) dry on a clean and flat surface after filter(s) are washed through water (Fig. 3)
- Re-install the clean, dry filter(s) by the sequence of the filter stages (Fig. 4)



Fig. 1



Fig. 2

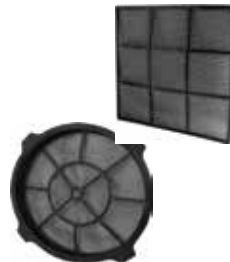


Fig. 3



Fig. 4

Pleated Media Filter Care for X-2480A

PF13 – Pleated Air Filter is popularly used for the air filtration in home air condition system. Featured with our X-2480A Air Scubber, PF13 is the second stage Pre-Filter to extend the life of expensive HEPA filter. Pleated Air Filter gives greater particulate capture, fewer IAQ complaints, and do not promote bacterial growth, which decrease Health Hazard.

PF13 is not washable. To keep high efficiency and good performance of the air scubber, Pleated Media Filter PF13 needs to be changed regularly. It doesn't cost much.



Washable Purifying Filter Care for X-2380

WF50 – Washable Purifying Filter as primary filter featured with the X-2380 Air Scrubber. The filter trap smaller contaminants to alleviate allergies and other common respiratory problems.

The Primary WF50 filter requires a simple maintenance routine for effective performance. The Filter Clean/Change Light will light up when filters need attention. Always make sure that the Air Scrubber is turned off before removing filters. Use vacuum or clean cloth and lay it flat on a clean surface. WF50 is a washable filter.

Cleaning Purifying Filter (WF50):

1. Remove filter(s) and lay them on a flat clean surface
2. Use a vacuum or clean cloth to remove loose debris
3. Rinse thoroughly with water
4. Lay on a flat surface on top of a clean cloth to completely dry before reinstalling

ATTN: ONLY the X-2380 Features 3 Washable Filter Stages.
DO NOT WET the pre or primary Filters (Pleated Media PF13, Carbon CF15 & HEPA35-33) for the model X-2480A and X-2580.



Activated Carbon Filter Care for X-2580

CF15 - Activated Carbon Filters are used to remove contaminants and impurities through the process of chemical absorption. The CF15 captures a wide variety of volatile organic compounds that includes smoke, food odors, fumes from paint and paint thinners, sewer odors and more. Carbon Filters can be reused if the adsorbed substances are removed. This process is known as 'regeneration'. Simply heating the spent carbon at a given temperature for an adequate length of time can regenerate activated carbon to the point where it can be reused. The CF15 fits the X-2580 model; it is placed inside the housing in front of the HEPA filter. Always make sure that the Air Scrubber is turned off when removing the carbon filter. Never use water to clean the CF15 filters. Use vacuum or clean cloth and lay it flat on a clean and dry surface. For best results, put the CF15 under the sun and leave it there for a couple of hours. The capacity of the carbon filter will vary widely depending on conditions, but it should be replaced when a decline of effectiveness is noted.



HEPA Filter Care for X-2480A and X-2580

HEPA35-33 – HIGH EFFICIENCY PARTICULATE AIR FILTER, also known as HEPA filter, ensures superior air quality inside our homes and protects us from a wide range of health risks associated with indoor air pollution. The filter is designed and implemented to trap even the tiniest contaminants (approximately 99.97% of all particles measuring 0.3 microns) that aren't usually captured by traditional air filters, in order to prevent allergies and other common respiratory problems. The HEPA filter requires a simple maintenance routine, which can be performed in a timely and cost-effective manner. To maximize HEPA filter life, be sure to clean/change the pre-filters regularly. The Filter Change Light will light up when filters need attention. Always make sure that the Air Scrubber is turned off before removing the HEPA filter. Never use water to clean the HEPA filter. Use vacuum or clean cloth and lay it flat on a clean, dry surface. When putting the HEPA filter back into the machine, make sure the side with the gasket is facing the motor housing to prevent air leakage.



Filter Replacement

The filters may need to be changed after certain period of time depending on your usage and the life of each type of filters.

All filter accessories are available for purchase directly from XPOWER's headquarters in California. Please call XPOWER Parts Center at (626) 376-9690 or email to info@xpower.com

Always wear a respirator and personal protective gear when removing or replacing filters. Lay the Air Scrubber flat, unlock top latch of the housing, open the inlet panel and remove filters.

Precautionary Measure When Cleaning and Changing Filters

An air scrubber captures particles that can be hazardous to human health. During the process of changing filters, decontamination, or performing maintenance, large concentrations of captured particles can become airborne in the immediate area. For these reasons, air scrubber operators should wear appropriate personal protection equipment (PPE) when performing any type of service on an air scrubber. A NIOSH-approved respirator is always essential for these tasks. If you've used the air scrubber for mold remediation or in another environment with known contaminants, you should also consider wearing gloves, eye protection and coverall



NIOSH-Approved
Respirator Mask

Disposal of Filters

The particles captured by a filter can cause adverse human health effects once they are released into the air. For this reason, you should dispose of used filters with care. You should place used filters in a plastic bag and seal the top before disposing. Always follow local regulations before disposing.

Troubleshooting

For any problems not listed below, call your local distributor or contact our Service Department.

SYMPTOM	POSSIBLE CAUSE	ACTION
Motor not running	Switched off	Make sure unit is plugged in and switch is turned to ON mode
	Power failure	Check outlet/change to another outlet
	Wiring failure	Contact XPOWER for service/repair.
Scraping noise from fan	Obstruction at the intake or exhaust of fan	Remove obstruction
	Fan broken	Contact XPOWER for service/repair
Weak air flow	Obstructed vents and/or filters	Clean out vents/inlets/filters
Change light illuminated	Insufficient airflow caused by clogged filters	Replace the filters

XPOWER Limited Warranty (USA)

XPOWER's Limited Warranty covers the unit (excludes POWER CORD) from defects in material and craftsmanship. The Warranty covers normal use for a term of one year from the original date of purchase including parts, labor, and one way shipping. Non-contiguous states must pay for roundtrip freight. A purchase receipt must be provided.

Important!

This warranty does not cover or apply to defects due directly or indirectly to misuse, abuse, disassembly, alteration, corrosive chemicals, improper voltage, fire, flood, negligence, accident, improperly or incorrectly performed maintenance or repair, or failure to perform necessary maintenance or repair, or if the use of this product is not in compliance with the instructions and specifications for its use

Service

For Warranty service and parts replacement (US customer only), you must:

- A. Call 1-855-855-8868 for a RMA (Return-Merchandise-Authorization) number.
- B. Have original proof of purchase.
- C. Use the original undamaged packaging or an industrial certified packaging method.

End user will be responsible for shipping the unit (with RMA Number showing on the shipping label) to the XPOWER Service Department. XPOWER will inspect, assess and advise the repairs needed and the applicable cost, if any.

For users outside the US, please contact an XPOWER Distributor in your country or region for Warranty service and parts replacement.

Warranty Registration (for US customer only)

For your product warranty, please complete and mail / fax this form to XPOWER MANUFACTURE, INC.

Address: 240 Clary Ave., San Gabriel, CA 91776. Tel: 626-285-3301 Fax: 626-285-3302

(For your convenience, register your product online at xpower.com)

Company Name / Contact Person / Title _____

Address _____ City _____

State / Province _____ Zip _____ Country _____

Phone _____ Fax _____ E-mail _____

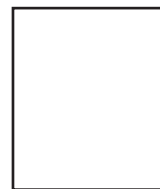
Model # _____ **Serial #:** _____

Date of Purchase ____/____/____ **Purchased From** _____

Additional Comments / Suggestions _____



From: _____



To:
XPOWER MANUFACTURE, INC
240 Clary Avenue
San Gabriel, CA 91776, USA
Tel: 626-285-3301



PLEASE READ AND SAVE THESE INSTRUCTIONS



AIR SCRUBBER OWNER'S MANUAL

X-2380, X-2480A, X-2580



XPOWER MANUFACTURE, INC
240 Clary Avenue
San Gabriel, CA 91776, USA
Tel: 626-285-3301, Fax: 626-285-3302
www.xpower.com

Introduction

XPOWER's unique and highly innovative air scrubber purifying systems create a fresh, clean environment in even difficult areas such as grooming salons. XPOWER 2000 series Air Scrubbers feature an advanced technology 3~4 stage filtration system along with a powerful 1/2 HP high capacity motor for spaces up to 1500 sqft. Enjoy breathing healthier with your XPOWER Professional Air Purification Equipment!

Features:

- 3~4 stage air filtration system
- Only 2.8 amp usage with high airflow capacity from 550 CFM
- 5-Speed Control
- Easy cord wrap design
- Convenient filter change/clean light
- Stackable, compact, and lightweight design
- 2 airflow positions – upright (vertical) or horizontal
- Durable and rugged ABS housing
- 1 year limited warranty



Air Scrubbers can be stacked (up to 5) on their sides for storage. Stacking feature is not secure for transportation.

Index

Introduction	2
Safety Instructions	3
Operation	4~5
Parts List	5~6
Specifications	7
Filtration Systems	8~9
Maintenance	9-15
Washable Nylon Pre-Filters	10
Pleated Media Pre-Filter	11
Washable Purifying Filter Care	12
Activated Carbon Filter Care.....	13
HEPA Filter Care.....	14
Filter Replacement	15
Troubleshooting	16
Warranty / Service	17
Registration Form	18

- 1 -

Safety Instructions

WARNING: IMPORTANT SAFETY PRECAUTIONS! PLEASE READ COMPLETELY BEFORE USING PRODUCT!

When using electrical appliances, basic safety precautions should always be followed to reduce the risk of fire, electric shock, and personal injury, including but not limited to the following:

1. To prevent electric shock, do not operate the unit in standing water. Never plug in or unplug the unit with wet hands or while standing in water.
2. To avoid risk of injury, do not direct air flow at face or body.
3. Use only with GFCI protected receptacles. Please contact a qualified electrician for verification and / or installation of a GFCI receptacle if necessary.
4. Do not operate any unit with a damaged cord or plug. Discard Air Scrubbers or return to an authorized service facility for examination and/or repair.
5. Air Scrubber is an automatically operated device. To reduce the risk of injury, disconnect from power supply before servicing.
6. Do not run cord under carpet. Do not cover cord with throw rugs, runners, or similar coverings. Do not route cord under furniture or appliances. Arrange cord away from traffic area and where it will not be tripped over.
7. Do not allow children to play with or around the Air Scrubbers at any time.
8. Do not move or carry the Air Scrubber while unit is operating.
9. Keep air intakes and exhausts clean at all times. Avoid clogging or blocking to prevent the machine from overheating. Blocking the air intake could result in a fire or electrical hazards.
10. Always place the Air Scrubber on a smooth and level surface for safe operation.
11. Unplug the unit before performing any maintenance, cleaning, or servicing.
12. Any misuse or abuse of this product will void the warranty.

- 3 -

Operation

In order to remove airborne particles from the surrounding environment, XPOWER Air Scrubbers are designed to draw air through a series of filters and deliver the purest air. Each filter stage operates with progressively higher efficiency. The unit removes airborne particles like hair, skin flakes, visible dust, mold spores, pollen, pet dander and miscellaneous debris.

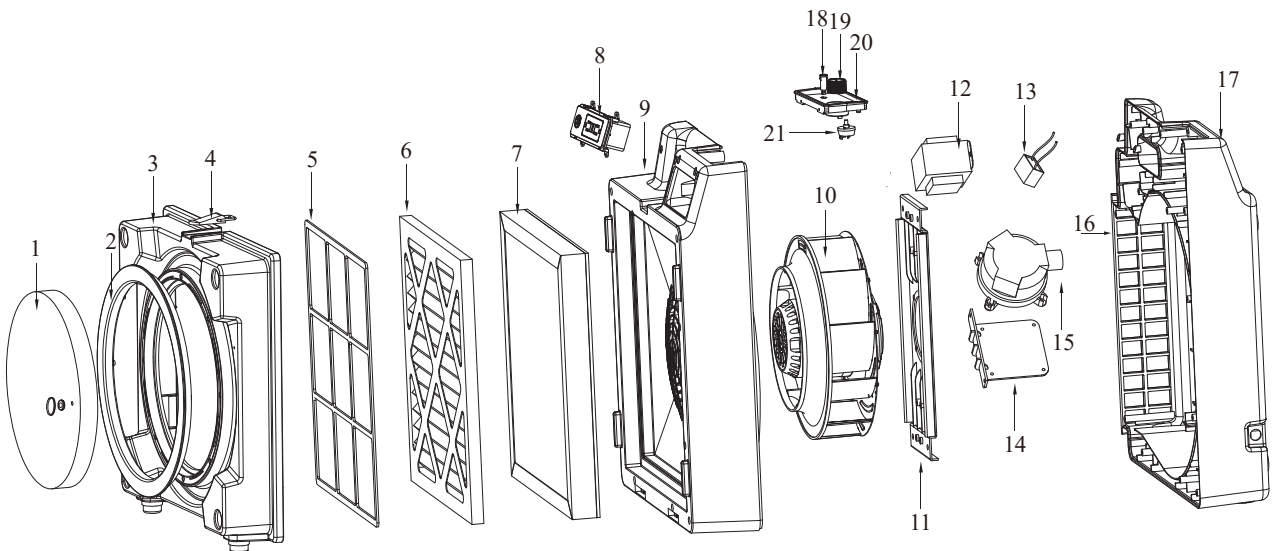
1. XPOWER Air Scrubbers are shipped ready-to-use. Prior to plugging the unit into the power source, inspect completely for any shipping damage.
2. Carefully place the Air Scrubber upright on a stable, flat dry surface.
3. Plug the electrical cord into the power outlet.
4. The unit can be used in 2 different angle positions: vertical and horizontal.
5. Turn the control knob to desired speed and make sure the unit operates normally.
6. To reduce the risk of injury, close supervision is necessary when the machine is used near children. Do not allow children to play with, or around the Air Scrubber at any time.



Filter Clean/Change Indicator Light

The red Filter Clean/Change indicator Light will illuminate when accumulated debris is over-saturated, and filter needs to be cleaned. If the light is still illuminated after the filters are cleaned, the filter(s) possibly need to be replaced.

- 4 -



- 6 -

Daisy Chain for X-2480A

XPOWER X-2480A Air Scrubber is daisy chainable with a low 2.8 amp draw. The 12 amp on-board Circuit Breaker allows two additional 2000 series units or other devices (total additional amperage must be less than 9A) to run on one circuit the same time. If the Auxiliary Outlet overloads (over 12A), the Circuit Breaker will trip. If the Breaker does trip, unplug the units and press the Reset button. Then Plug the units back into the power source and turn on the switch.



Parts List

Item No.	Parts Name	Item No.	Parts Name
1	Removable Air Inlet Foam Cap	2	Air Inlet
3	Inlet Panel	4	Latch
5	13"x13" Nylon Mesh Filter	6	Pleated Media Filter
7	1.4" Thick HEPA Filter	8	GFCI Receptacle
9	Front Housing	10	Motor
11	Motor Bracket	12	Transformer
13	Capacitor	14	Air Valve Bracket
15	Pressure Switch	16	Air Outlet Grill
17	Rear Housing	18	HEPA Filter Clean/Change Light
19	Speed Control Knob	20	Control Panel
21	Switch		

** Actual parts are not limited on this list, contact XPOWER for ordering parts.

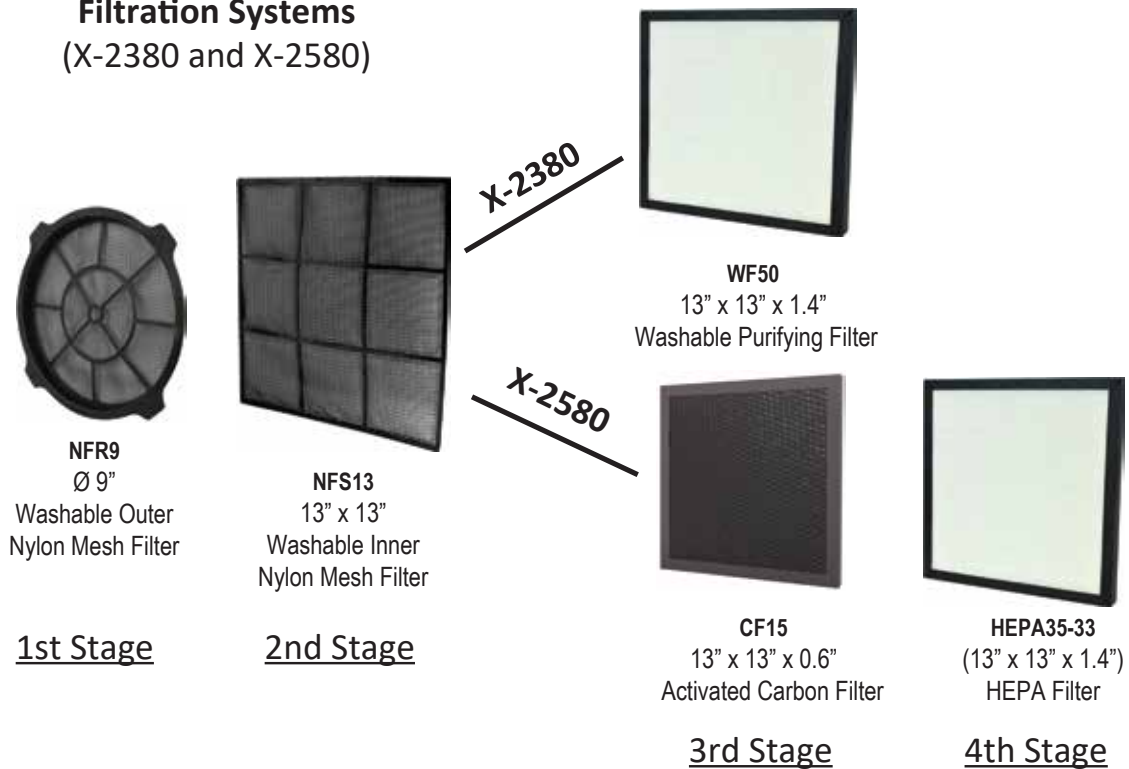
- 5 -

Specifications

MODEL NO.	X-2380	X-2580	X-2480A
VOLTAGE / FREQUENCY	115 V / 60 Hz		
POWER	1/2 HP		
AMPERAGE	2.8 Amps (On Highest Speed)		
RATED AIRFLOW	550 CFM		
SPEEDS	5-Speed Control		
UNIT WEIGHT	23 lbs	23.6 lbs	23.6 lbs
UNIT DIMENSIONS (L x W x H)	16.6" x 10.4" x 18.9"		
CORD LENGTH	13 ft. / 18AWG		13 ft. / 14AWG
HOUSING	ABS		
DUCT (AIR OUTLET) SIZES	5" x 10.8"		
FILTRATION SYSTEM	3-STAGE	4-STAGE	3-STAGE
1 ST STAGE FILTER	NFR9 - Ø 9" Washable Outer Nylon Mesh Filter		NFS13 - 13" x 13" Washable Nylon Mesh Filter
2 ND STAGE FILTER	NFS13 - 13" x 13" Washable Nylon Mesh Filter		PF13 - 13" x 13" Pleated Media Filter
3 RD STAGE FILTER	WF50 - 13" x 13" x 2" Washable Purifying Filter	CF15 - 13" x 13" x 0.6" Activated Carbon Filter	HEPA35-33 - 13" x 13" x 1.4" HEPA Filter
4 TH STAGE FILTER	HEPA35-33 - 13" x 13" x 1.4" HEPA Filter		
DAISY CHAIN	N/A		Yes
FILTER CLEAN/CHANGE LIGHT	Indicates when the filters need to be cleaned or changed		
STACKABLE	Up to 5 units high		
SAFETY CERTIFICATIONS	ETL/CETL		

- 7 -

Filtration Systems (X-2380 and X-2580)



- 8 -

XPOWER 2000 series air scrubber's filtration systems include easy to clean, washable nylon pre-filters that should be frequently maintained. Monitor filters and clean or change out once they become loaded with particles. The air scrubber begins to reduce airflow and increase pressure drop. Overly loaded filters not only restrict CFM, they can also result in a loss of filtration efficiency. XPOWER Air Scrubbers include on-board pressure sensors that automatically alert the Filter Clean/Change Light when the filters need cleaning. The filter may need to be changed after using for a quite long period.



Loaded Filter

Cleaning of Washable Nylon Pre-Filters

NFR9 & NFS13 - Outer and Inner Nylon Mesh Filters are washable. These Pre-filters will protect the inner filters from larger particles and therefore extend the life and usage of the primary 3rd & 4th Stage filters. Always make sure the Air Scrubber is turned off before removing filters. Before cleaning, remove all debris from both the inner and outer nylon mesh filters, then, rinse with water and lay flat on a clean and dry surface to dry completely before re-installing. The NFR9 and NFS13 filters are used for X-2380 and X-2580 air scrubbers as first two stages. Both filters need to be cleaned frequently, especially for the Outer Nylon Mesh Filter NFR9. NFS13 is also used for X-2480A as the first stage filter.

Follow the steps to clean nylon pre-filter(s):

- Turn off the machine before cleaning the mesh filter(s) (Fig. 1)
- Remove particles from nylon filter(s) before rinsing with water (Fig. 2)
- Let filter(s) dry on a clean and flat surface after filter(s) are washed through water (Fig. 3)
- Re-install the clean, dry filter(s) by the sequence of the filter stages (Fig. 4)

- 10 -

Filtration System (X-2480A)

1st Stage

NFS13
13" x 13"
Washable Inner
Nylon Mesh Filter



2nd Stage

PF13
(13" x 13")
Pleated Media Filter



3rd Stage

HEPA35-33
(13" x 13" x 1.4")
HEPA Filter



Maintenance

1. To keep the Air Scrubber clean, use a damp cloth to wipe the surface of the housing.
2. Never clean the Air Scrubber unit directly with water (see following pages for proper filter cleaning instructions).
3. When not in use, unplug and store the Air Scrubber in a dry indoor place out of reach of children.
4. Always disconnect the Air Scrubber from its power source before performing any maintenance or cleaning.

Important: Filter Maintenance and Replacement

Basic routine maintenance of filters is required to optimize performance of your air scrubber and extend the life of primary filters.

- 9 -



Fig. 1



Fig. 2

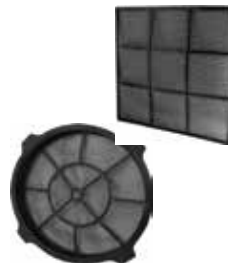


Fig. 3



Fig. 4

Pleated Media Filter Care for X-2480A

PF13 – Pleated Air Filter is popularly used for the air filtration in home air condition system. Featured with our X-2480A Air Scrubber, PF13 is the second stage Pre-Filter to extend the life of expensive HEPA filter. Pleated Air Filter gives greater particulate capture, fewer IAQ complaints, and do not promote bacterial growth, which decrease Health Hazard.

PF13 is not washable. To keep high efficiency and good performance of the air scrubber, Pleated Media Filter PF13 needs to be changed regularly. It doesn't cost much.



- 11 -

Washable Purifying Filter Care for X-2380

WF50 – Washable Purifying Filter as primary filter featured with the X-2380 Air Scrubber. The filter trap smaller contaminants to alleviate allergies and other common respiratory problems.

The Primary WF50 filter requires a simple maintenance routine for effective performance. The Filter Clean/Change Light will light up when filters need attention. Always make sure that the Air Scrubber is turned off before removing filters. Use vacuum or clean cloth and lay it flat on a clean surface. WF50 is a washable filter.

Cleaning Purifying Filter (WF50):

1. Remove filter(s) and lay them on a flat clean surface
2. Use a vacuum or clean cloth to remove loose debris
3. Rinse thoroughly with water
4. Lay on a flat surface on top of a clean cloth to completely dry before reinstalling

ATTN: ONLY the X-2380 Features 3 Washable Filter Stages. DO NOT WET the pre or primary Filters (Pleated Media PF13, Carbon CF15 & HEPA35-33) for the model X-2480A and X-2580.



- 12 -

HEPA Filter Care for X-2480A and X-2580

HEPA35-33 – HIGH EFFICIENCY PARTICULATE AIR FILTER, also known as HEPA filter, ensures superior air quality inside our homes and protects us from a wide range of health risks associated with indoor air pollution. The filter is designed and implemented to trap even the tiniest contaminants (approximately 99.97% of all particles measuring 0.3 microns) that aren't usually captured by traditional air filters, in order to prevent allergies and other common respiratory problems. The HEPA filter requires a simple maintenance routine, which can be performed in a timely and cost-effective manner. To maximize HEPA filter life, be sure to clean/change the pre-filters regularly. The Filter Change Light will light up when filters need attention. Always make sure that the Air Scrubber is turned off before removing the HEPA filter. Never use water to clean the HEPA filter. Use vacuum or clean cloth and lay it flat on a clean, dry surface. When putting the HEPA filter back into the machine, make sure the side with the gasket is facing the motor housing to prevent air leakage.



- 14 -

Activated Carbon Filter Care for X-2580

CF15 - Activated Carbon Filters are used to remove contaminants and impurities through the process of chemical absorption. The CF15 captures a wide variety of volatile organic compounds that includes smoke, food odors, fumes from paint and paint thinners, sewer odors and more. Carbon Filters can be reused if the adsorbed substances are removed. This process is known as 'regeneration'. Simply heating the spent carbon at a given temperature for an adequate length of time can regenerate activated carbon to the point where it can be reused. The CF15 fits the X-2580 model; it is placed inside the housing in front of the HEPA filter. Always make sure that the Air Scrubber is turned off when removing the carbon filter. Never use water to clean the CF15 filters. Use vacuum or clean cloth and lay it flat on a clean and dry surface. For best results, put the CF15 under the sun and leave it there for a couple of hours. The capacity of the carbon filter will vary widely depending on conditions, but it should be replaced when a decline of effectiveness is noted.



- 13 -

Filter Replacement

The filters may need to be changed after certain period of time depending on your usage and the life of each type of filters.

All filter accessories are available for purchase directly from XPOWER's headquarters in California. Please call XPOWER Parts Center at (626) 376-9690 or email to info@xpower.com

Always wear a respirator and personal protective gear when removing or replacing filters. Lay the Air Scrubber flat, unlock top latch of the housing, open the inlet panel and remove filters.

Precautionary Measure When Cleaning and Changing Filters

An air scrubber captures particles that can be hazardous to human health. During the process of changing filters, decontamination, or performing maintenance, large concentrations of captured particles can become airborne in the immediate area. For these reasons, air scrubber operators should wear appropriate personal protection equipment (PPE) when performing any type of service on an air scrubber. A NIOSH-approved respirator is always essential for these tasks. If you've used the air scrubber for mold remediation or in another environment with known contaminants, you should also consider wearing gloves, eye protection and coverall



NIOSH-Approved
Respirator Mask

Disposal of Filters

The particles captured by a filter can cause adverse human health effects once they are released into the air. For this reason, you should dispose of used filters with care. You should place used filters in a plastic bag and seal the top before disposing. Always follow local regulations before disposing.

- 15 -

Troubleshooting

For any problems not listed below, call your local distributor or contact our Service Department.

SYMPTOM	POSSIBLE CAUSE	ACTION
Motor not running	Switched off	Make sure unit is plugged in and switch is turned to ON mode
	Power failure	Check outlet/change to another outlet
	Wiring failure	Contact XPOWER for service/repair.
Scraping noise from fan	Obstruction at the intake or exhaust of fan	Remove obstruction
	Fan broken	Contact XPOWER for service/repair
Weak air flow	Obstructed vents and/or filters	Clean out vents/inlets/filters
Change light illuminated	Insufficient airflow caused by clogged filters	Replace the filters

- 16 -

Warranty Registration (for US customer only)

For your product warranty, please complete and mail / fax this form to XPOWER MANUFACTURE, INC.
 Address: 240 Clary Ave., San Gabriel, CA 91776. Tel: 626-285-3301 Fax: 626-285-3302
 (For your convenience, register your product online at xpower.com)

Company Name / Contact Person / Title _____	
Address _____	City _____
State / Province _____	Zip _____ Country _____
Phone _____	Fax _____ E-mail _____
Model # _____	Serial #: _____
Date of Purchase ____ / ____ / ____	Purchased From _____
Additional Comments / Suggestions _____	



XPOWER Limited Warranty (USA)

XPOWER's Limited Warranty covers the unit (excludes POWER CORD) from defects in material and craftsmanship. The Warranty covers normal use for a term of one year from the original date of purchase including parts, labor, and one way shipping. Non-contiguous states must pay for roundtrip freight. A purchase receipt must be provided.

Important!

This warranty does not cover or apply to defects due directly or indirectly to misuse, abuse, disassembly, alteration, corrosive chemicals, improper voltage, fire, flood, negligence, accident, improperly or incorrectly performed maintenance or repair, or failure to perform necessary maintenance or repair, or if the use of this product is not in compliance with the instructions and specifications for its use

Service

For Warranty service and parts replacement (US customer only), you must:

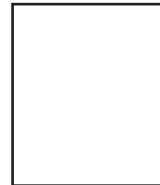
- A. Call 1-855-855-8868 for a RMA (Return-Merchandise-Authorization) number.
- B. Have original proof of purchase.
- C. Use the original undamaged packaging or an industrial certified packaging method.

End user will be responsible for shipping the unit (with RMA Number showing on the shipping label) to the XPOWER Service Department. XPOWER will inspect, assess and advise the repairs needed and the applicable cost, if any.

For users outside the US, please contact an XPOWER Distributor in your country or region for Warranty service and parts replacement.

- 17 -

From: _____



To:
XPOWER MANUFACTURE, INC
240 Clary Avenue
San Gabriel, CA 91776, USA
Tel: 626-285-3301

