

WARING
COMMERCIAL

WSC160

16" Electric Crepe Maker

WSC160C /Canada

Unit Information

60Hz - 1800 Watts

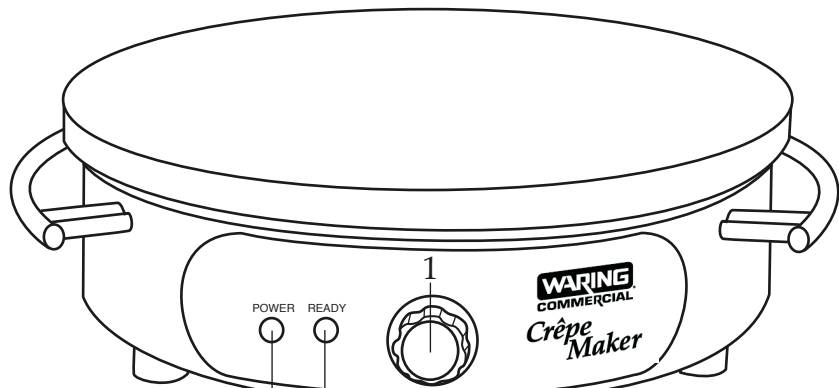
16" Cast-iron Cooking Surface

One Year Warranty

Season Before First Use This Process

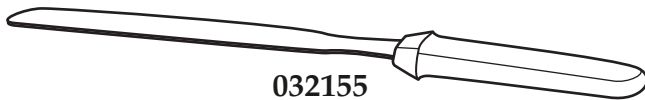
Will Take About 1 - 1 1/2 Hours

570°F Adjustable Thermostat

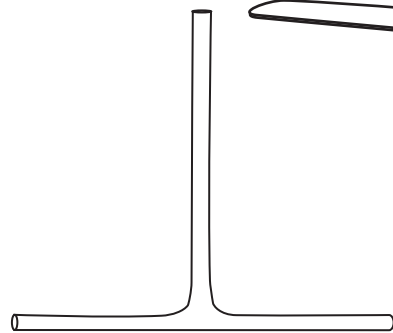


032153
WSC160 Unit

032154
WSC160C Unit



032155
Crepe Spatula



032156
Batter Spreader

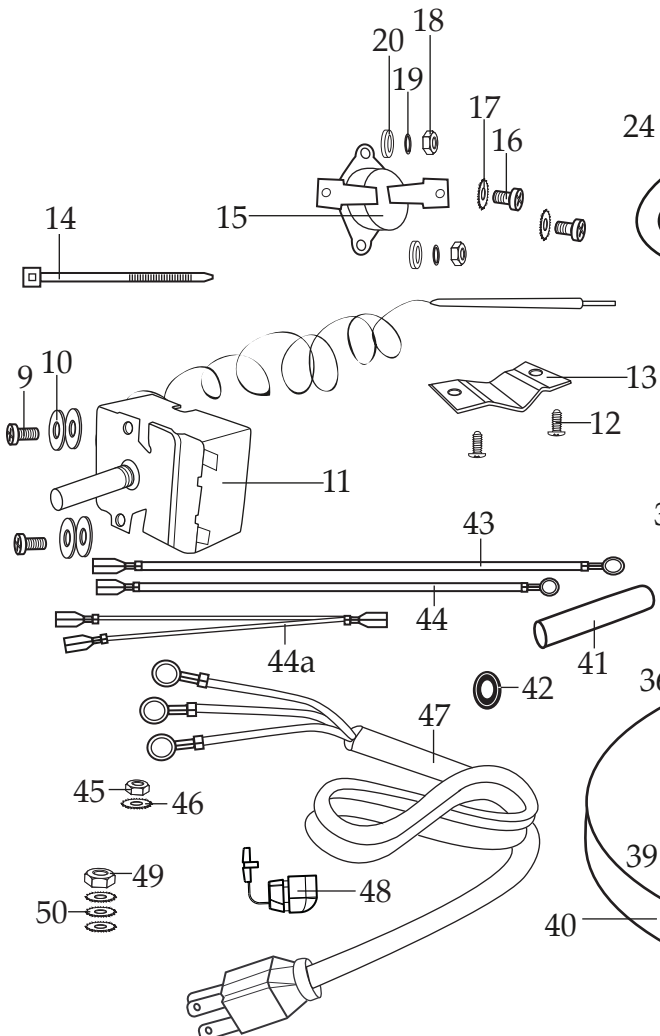
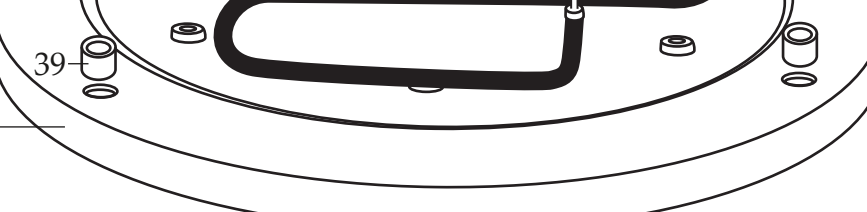
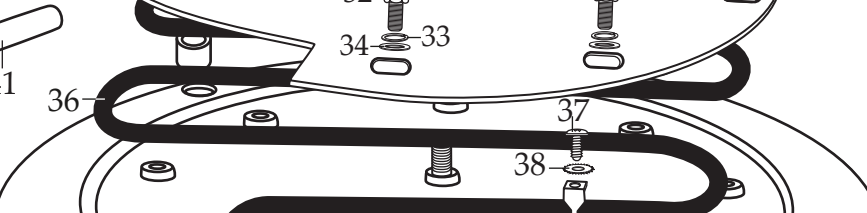
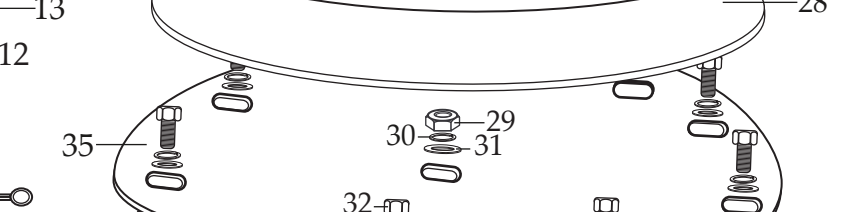
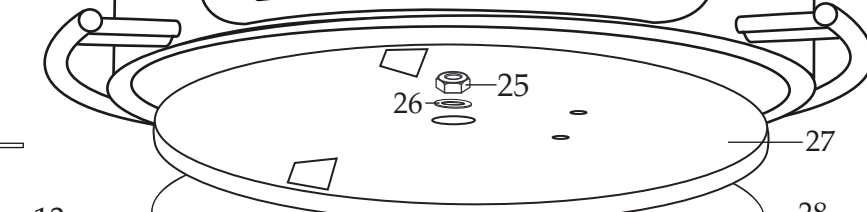
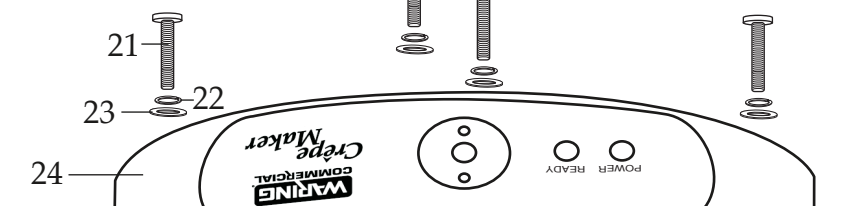
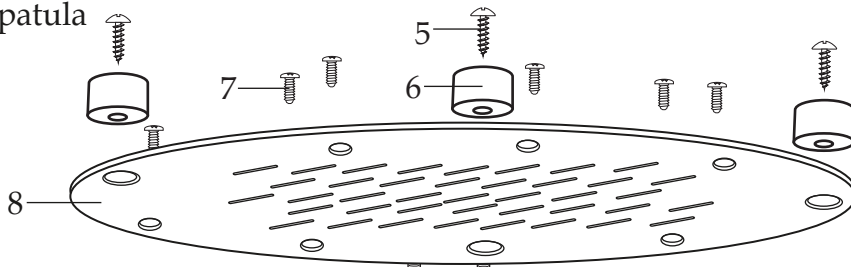


Illustration #	Part #	Description
1	032130	Control Knob
2	028627	Set Screw
3	029941	Power Light / red
4	030515	Ready Light / green
5	028623	Foot Screw 4 Req.'d
6	028622	Foot 4 Req.'d
7	030006	Screw 6 Req.'d
8	032131	Bottom Plate
9	029943	Screw / thermostat 2 Req.'d
10	032132	Washer / thermostat 4 Req.'d
11	032133	Thermostat
12	030006	Screw 2 Req.'d
13	032134	Bracket / thermostat
14	013731	Wire Tie 4 Req.'d
15	032135	Thermal Cut-off
16	030075	Screw 2 Req.'d
17	030076	Lock Washer 2 Req.'d
18	029998	Nut 2 Req.'d
19	032136	Spring Washer 2 Req.'d
20	029997	Washer 2 Req.'d
21	032137	Screw 4 Req.'d
22	032138	Spring Washer 4 Req.'d
23	032139	Washer 4 Req.'d
24	032140	Outer Base Shell with Handles
25	029980	Hex Nut
26	029951	Washer
27	032141	Insulation Cover
28	032142	Insulation
29	029980	Hex Nut

Illustration #	Part #	Description
30	032144	Spring Washer
31	029951	Washer
32	029962	Bolt 6 Req.'d
33	029963	Spring Washer 6 Req.'d
34	029964	Washer 6 Req.'d
35	032143	Element Plate
36	032145	Heating Element
37	029958	Screw 2 Req.'d
38	029959	Lock Washer 2 Req.'d
39	032146	Spacer 4 Req.'d
40	032159	Grill Plate
41	030525	Rubber Sleeve 2 Req.'d
42	030533	Housing Lead Protector
43	032147	Lead / red 2 Req.'d (thermostat to thermal cut-off & element)
	032151	Lead / white (red power light to ceramic seal)
44	032148	Lead / black (element to ceramic seal)
44a	032150	Lead / double white (thermostat to ready light and power light)
	032149	Lead / white (thermostat to ready light)
45	030534	Nut / ground
46	030536	Lock Washer / ground
47	032152	Cord Set
48	030518	Strain Relief
49	030535	Nut / ceramic seal
50	030536	Lock Washer / ceramic seal 3 Req.'d