

# WORKSHOP<sup>®</sup> MD

## WET/DRY VACS

### WET/DRY VAC ACCESSORY GUIDE

Learn more about the available accessories for your Wet/Dry Vac



SUCK IT  
UP. GET  
IT DONE.

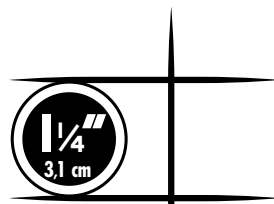
## FIND THE RIGHT TOOL FOR THE JOB

### I. CHOOSE YOUR VAC HOSE INLET SIZE

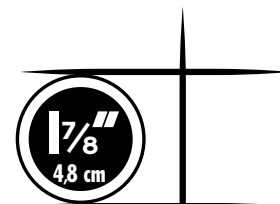
WORKSHOP accessories come in 3 sizes:

- 12-16 U.S. Gallon (45-60 L) WORKSHOP vacs 2½" (6,4 cm)
- 3-11 U.S. Gallon (11-41 L) WORKSHOP vacs are 1⅞" (4,8 cm)
- 2.5 U.S. Gallon (9 L) WORKSHOP vacs are 1¼" (3,1 cm)

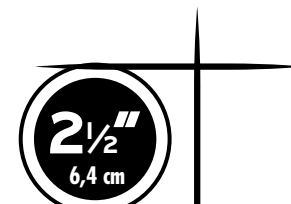
Vac Models listed on back



For maneuverability in tight spaces



A great blend of maneuverability and airflow



Allows for larger sized debris collection and maximum airflow

### 2. DETERMINE APPLICATION

Pairing the right hand tool, floor tool or wand with your WORKSHOP Wet/Dry Vac makes every cleanup job faster and more efficient.



**Utility Nozzle-**  
Pick-up for large areas  
1¼" / WS12509A  
1⅞" / WS17809A  
2½" / WS25009A



**Wet Nozzle-**  
Squeegee for liquid clean-up  
1¼" / WS12510A  
1⅞" / WS17810A  
2½" / WS25010A



**Extension Wand-**  
Extends Reach  
1¼" / WS12508A  
1⅞" / WS17808A  
2½" / WS25008A



**Dusting Brush-**  
Versatile brush  
1¼" / WS12501A  
1⅞" / WS17801A  
2½" / WS25001A



**Crevice Tool-**  
Gets into tight spaces  
1¼" / WS12502A  
1⅞" / WS17802A  
2½" / WS25002A



**Car Nozzle-**  
Deep vehicle cleaning  
1⅞" / WS17803A  
2½" / WS25003A



**Floor Brush-**  
Large area brush cleaning  
1⅞" / WS17814A  
2½" / WS25014A



**Claw Nozzle-**  
Deep and thorough cleaning  
1¼" to 2½" / WS17840A  
Not for use with WS17821A



**Blowing Nozzle-**  
Narrow stream for Detach  
2½" / WS25006A



**Diffuser/Muffler-**  
For quieter operation  
2½" / WS25025A



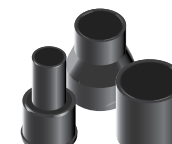
**Roll Tight Locking Sleeve -**  
Secures wands & accessories  
2½" / WS25000A



**Universal Tool Adapter-**  
Connect power tools to hose  
WS25007A



**2½" - 1¼" Adapter-**  
Allows 1¼" nozzle to connect to larger hose  
WS25011A



**3 Pc. Adapter Kit-**  
1⅞" - 1¼" Adapter  
2½" - 1⅞" Adapter  
2½" Hose-Hose  
WS25055A

### 3. REPLACEMENT/EXTENSION HOSES

WORKSHOP replacement and extension hoses.



Dual-Flex™ technology resists crimping and collapsing, and adds 180° flexibility at both hose ends for enhanced maneuverability.



The Contractor grade hose is more flexible and durable than a standard hose.



**7' (2,1 m) Dual-Flex Locking Hose-**  
2½" / WS25020A



**10' Contractor Grade Locking Hose-**  
1⅞" / WS17823A



**7' (2,1 m) Locking Hose-**  
1⅞" / WS17820A



**7' (2,1 m) Locking Hose-**  
Stretches from 2'-7'  
1⅞" / WS17821A



**6' (1,8 m) Hose-**  
Fits most Shop-Vac®  
1¼" / WS12520A

# WORKSHOP<sup>®</sup> MD

## WET/DRY VACS

### STANDARD ACCESSORY SIZES FOR YOUR MODEL OF VAC

**1 1/4"**  
**DIAMETER**

Accessory Size:  
1 1/4" (3,1 cm)

WS0250VA

**1 7/8"**  
**DIAMETER**

Accessory Size:  
1 7/8" (4,8 cm)

WS0300VA, WS0400VA,  
WS0450VA, WS0500VA,  
WS0500WM, WS0600VA,  
WS0900VA, WS1100CA

**2 1/2"**  
**DIAMETER**

Accessory Size:  
2 1/2" (6,1 cm)

WS1200DE, WS1200VA,  
WS1400CA, WS1600SS,  
WS1600VA

### ACCESSORY KITS

1 1/4" Premium Auto Cleaning Kit WS12552A  
Contractor Grade Hose, Claw Nozzle, Stiff  
Bristle Brush, Soft Bristle Brush, Flexible  
Crevice Tool

1 7/8" Accessory Kit (3 piece) WS17853A  
Wet Nozzle, Crevice Tool, Dusting Brush

1 7/8" Accessory Kit (6 piece) WS17856A  
2 Extension Wands, Utility Nozzle, Dusting  
Brush, Wet Nozzle, Crevice Tool

2 1/2" Gutter Cleaing Kit WS25051A  
2 Extension Wands, Blowing Nozzle,  
90° Elbow

[www.WORKSHOPvacs.com](http://www.WORKSHOPvacs.com)

NOTE: Not every type of accessory is available in each of the three sizes. Images used may not accurately reflect appearance of all items.  
Only 2-1/2" hoses are available with Dual-Flex technology. Accessories and hoses are designed to fit WORKSHOP products.  
All specifications and data subject to change without notice.