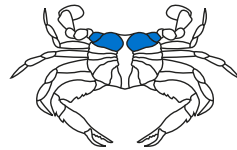
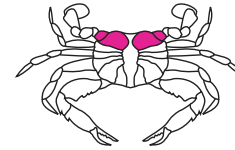


WHAT'S IN YOUR CAN?



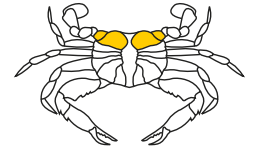
30/40 COLOSSAL LUMP

- 30 to 40 lumps per can
- Sweet white meat from the largest crabs
- Best used in crab cocktails, salads and garnishes



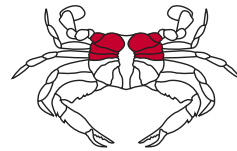
55/75 JUMBO LUMP

- 55 to 75 lumps per can
- Sweet white meat from large crabs
- Best used for gourmet crab cakes, salads and crab cocktails



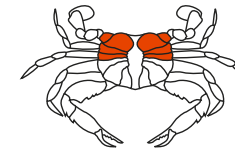
90/130 JUMBO LUMP

- 90 to 130 lumps per can
- Smaller lumps of sweet white meat from medium crabs
- Best used in crab cocktails, salads and casseroles



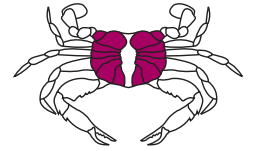
SUPER LUMP

- Pieces of jumbo lump broken lump and body meat
- Sweet white meat
- Best used for crab cocktails, crab cakes, salads and garnishes



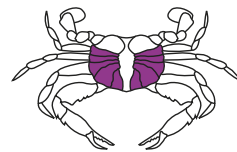
LUMP

- Pieces of broken jumbo lump and body meat
- Sweet white meat
- Best used for crab cakes and gourmet stuffing



BACKFIN

- Pieces of broken lump and white body meat
- Sweet white meat
- Best used for dips, soups, salads, stuffing and crab cakes



SPECIAL

- Pieces of backfin and white body meat
- Most economical white meat from body of all crabs
- Best used for dips, soups, salads, stuffing and crab cakes

HANDY
ESTABLISHED 1894

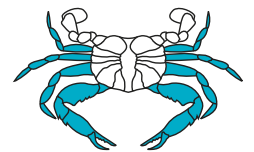
Handy International Incorporated

700 East Main Street

Salisbury, Maryland 21804 • U.S.A.

1(410)912-2000 • 1(800)426-3977

sales@handycrab.com • www.handyknowscrab.com



CLAW MEAT

- Crab meat from claws and legs
- Most economical grade of crab meat
- Best used in soups, dips, stuffing mixes and casseroles