



Freshly-drawn



Traditionally Served



Environmentally Friendly



Specially Branded

Owner's Manual

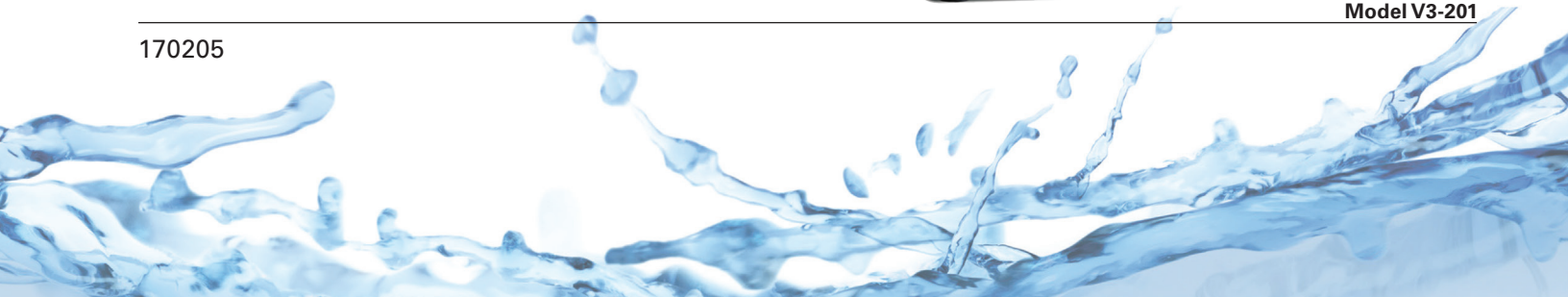
V3 Dispensing System

MODEL
V3-201



Model V3-201

170205





Intertek



i IMPORTANT

The information contained in this manual is specific to your system. It is **IMPORTANT** you **READ, FOLLOW** and **UNDERSTAND** the instructions given.

This manual and all material provided with your system should be retained in a convenient location for future reference.

Contact Vivreau if you have any questions regarding the information contained in this manual.

© 2017 Vivreau USA

All rights reserved.

Any and all information contained within this document is subject to change without prior notice.



TABLE OF CONTENTS

SAFETY PRECAUTIONS	5
GENERAL INFORMATION	7
TECHNICAL SPECIFICATIONS	9
PRE-INSTALLATION REQUIREMENTS	11
OPERATING INSTRUCTIONS.....	13
MAINTENANCE.....	17
TROUBLESHOOTING.....	23



SAFETY PRECAUTIONS

i IMPORTANT

This manual is intended for use only by personnel trained in the operation of the Vivreau V3-201 Dispensing System.

⚠ WARNING Improper installation, adjustment, alteration, service or maintenance can cause property damage, injury, or death. Read the installation, operating, and maintenance instructions thoroughly before installing or servicing this equipment.

⚠ WARNING Keep the area around the unit clear of any combustible materials.

⚠ WARNING Do not store or use gasoline or other flammable vapors or liquids in the vicinity of this or any other unit.

i IMPORTANT

Carefully read, understand and follow all safety instructions in this manual and safety labels on the unit.

- Keep safety labels in good condition and replace missing or damaged items.
- Learn how to operate the unit and how to use the controls properly.
- **Do not** let anyone operate the unit without proper training. This unit is intended for use by authorized personnel only.
- In the event of a power failure, **do not** attempt to operate this unit.
- Keep unit in proper working condition and **do not** allow unauthorized modifications to the unit.

⚠ WARNING Only trained and certified electrical, plumbing and refrigeration technicians should service this unit.

⚠ WARNING ALL WIRING AND PLUMBING MUST CONFORM TO NATIONAL AND LOCAL CODES. FAILURE TO COMPLY COULD RESULT IN SERIOUS INJURY, DEATH OR EQUIPMENT DAMAGE.

SAFETY PRECAUTIONS

This unit has been specifically designed to provide protection against personal injury.

To ensure continued protection, observe the following:

⚠ WARNING Disconnect power to the unit before servicing. Follow all LOCKOUT/TAGOUT procedures. Verify power to the unit is OFF and disconnected before any work is performed. Failure to do so could result in serious injury, death or equipment damage.

- To protect against electric shock, do not immerse power cord in water or other liquid.
- To prevent damage to the power cord, do not allow cord to hang over the edge of a table or counter, or come in contact with hot surfaces.
- Isolate unit from power supply (unplug or turn OFF breaker) and turn OFF the water supply when not in use and before cleaning.
- Allow Boiler (if supplied) to cool before removing any components.
- The use of spare parts and accessories not recommended by Vivreau may cause damage and/or injuries.
- **Do not** operate any unit with damaged cords, plugs, or after the unit malfunctions or has been damaged in any manner.
- **Do not** use outdoors.
- **Do not** place on or near a hot gas or electric burner.
- **Do not** use the unit for anything other than its intended use.
- **Save these instructions.**

Section 1
Safety Precautions

GENERAL INFORMATION

INFORMATION FOR THE READER

To find specific topics of interest quickly, refer to the Table of Contents at the beginning of this manual.

This manual is solely for the use of personnel trained in the operation of the Vivreau V3-201 Dispensing System only.

PURPOSE OF THE MANUAL

- Vivreau has produced this manual to provide necessary information to qualified and authorized personnel for the safe and proper installation, operation, and maintenance of the Vivreau V3-201 Dispensing System.
- Information contained in this manual will help prevent risks to health and safety, and the risk of economic losses.
- Keep this manual in a clearly identified and safe place throughout the working life of the unit, so that it will always be available as needed.
- The manufacturer reserves the right to make modifications to the unit without any obligation to provide prior notice.
- A number of symbols have been used to highlight particularly important parts of the text or important specifications. Their meaning is as defined below.

▲ DANGER

INDICATES AN IMMINENTLY HAZARDOUS SITUATION WHICH, IF NOT AVOIDED, WILL RESULT IN DEATH OR SERIOUS INJURY.

▲ WARNING

Indicates that suitable procedures must be adopted to avoid putting people's health and safety at risk or causing economic losses.

▲ CAUTION

Indicates a potentially hazardous situation which, if not avoided, may result in property damage, minor or moderate injury.

i IMPORTANT

Indicates important technical information which *must not* be overlooked.

TECHNICAL SPECIFICATIONS

GENERAL DESCRIPTION

The Vivreau V3-201 Dispensing System is designed to provide Chilled Still and Sparkling Water on demand.

The system has been designed for operation at ambient temperatures up to 90°F.

Dispensing Specifications		
Description	Specification	V3-201
Chilled still water	$\Delta T=18\text{ }^{\circ}\text{F}$ @ 15.8 gal/h	✓
Chilled sparkling water	$\Delta T=18\text{ }^{\circ}\text{F}$ @ 15.8 gal/h	✓
Water Pressure at Dispensing Head	5 PSI	✓

Operating Conditions		
Description	Specification	V3-201
Temperature	60 – 90°F	✓
Relative Humidity	60% (max.)	✓

Water Supply Requirements		
Description	Requirements	V3-201
1/2" FNPT connection with Ball Valve	1/2"	✓
PSI (min.)	50	✓
GPH (min.)	80	✓
Temperature (max.)	60°F	✓
Drain	*	✓

* = In lieu of a Stand-Pipe Drain, the Internal Drip Tray Container may be used.

CO ₂ Operating Pressure		
Description	Requirements	V3-201
Pressure	65 - 70 PSI	✓
Supply Pressure (Bulk System)	100 PSI (min.)	✓

Dispenser Head Specifications		
Description	Requirements	V3-201
Height	19.25"	✓
Distance Nozzle to Drip Tray	12.3"	✓

Section 3

Technical Specifications

Cooler/Carbonator Specifications		
Description	Specification	V3-201
Width	23.4"	✓
Height	52.9"	✓
Depth	23.2"	✓
Weight Empty	164 lbs.	✓
Weight Operational	201 lbs.	✓
Voltage	110/120 VAC/60 Hz	✓
Amperage	11A	✓

PRE-INSTALLATION REQUIREMENTS

INTRODUCTION

The Vivreau V3-201 Dispensing System is a free-standing Water Dispensing System. Chilled water is available from Dispensers that provide Still and Carbonated Water from individual faucets.



Vivreau V3-201 Dispensing Systems

PRE-INSTALLATION

Below are the services required to be in place prior to the installation of the Vivreau V3-201 Dispensing System. If you have any questions regarding these or other services, please contact **Vivreau Service** Toll-Free at 877-999-1044.

WATER SUPPLY

One (1) potable 1/2" cold water supply terminating in a 1/2" NPT Ball Valve, 1/2" female pipe thread.

i IMPORTANT

Ball Valve must be accessible for service and installation.

Minimum Water Pressure: 50 PSI

Minimum Water Flow: 80 gallons per hour

i IMPORTANT

The Vivreau V3-201 Dispensing System incorporates back-flow prevention. Any additional back-flow devices required by Federal, State or Local Code must also be supplied by the customer prior to installation. There must not be any other Filters/Pre-Filters inline before the unit.

ELECTRICAL OUTLET

Model V3-201

- (1) 15 Amp Electrical Receptacle (NEMA 5-15R) 120V, 60 Hz (11 Amps)

CO₂

CO₂ Cylinder (Customer supplied) - Size should be selected based on available space. A 20 lb. cylinder will fit inside unit.

NOTE: If connecting to a bulk or existing CO₂ system, a CO₂ line terminating at a 1/4" Barbed Shutoff Valve must be available within 40" of the unit with 100 PSI minimum pressure.

DRIP TRAY DRAIN (OPTIONAL)

Drip Tray can be plumbed to a drain. Customer will need to supply a drain according to Federal, State and Local Codes. Drain must be at least 1-1/4" ID.

VENTILATION

If the system is to be installed in an enclosed space or in a cabinet, adequate ventilation must be provided.

CAUTION Failure to provide adequate ventilation will cause system failure.

This unit is to be installed indoors only.

LOCATION OF SERVICES

All services must be accessible for installation and service. Ensure all services are kept within 40" of the Vivreau V3-201 Dispensing System.

Water Shutoff Valve to be located at low level. Ensure there is sufficient room for a 6" long fitting to be connected to the Water Shutoff Valve.

Top of drain should be located between 12" and 18" from floor level (Optional).

SHIPPING DAMAGE/MISSING PARTS

Unpack and inspect the unit for shipping damage and/or missing parts. If any damage or missing parts are found, contact **Vivreau Service** Toll-Free at 877-999-1044 and report the missing or damaged parts.

Section 4
Pre-Installation Requirements

OPERATING INSTRUCTIONS

The Vivreau V3-201 Dispensing System is designed for ease of use.

i IMPORTANT _____

Before operating the Vivreau V3-201 Dispensing System, make sure the water supply is turned ON and the unit is plugged in.

BEFORE USE

ALWAYS sanitize your hands.

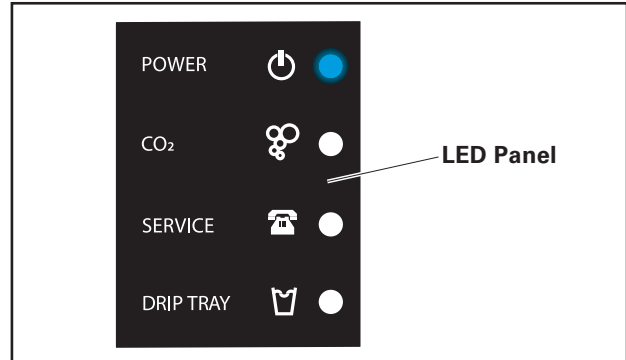
ALWAYS wear hygienic gloves.

ALWAYS remove anti-bacterial cling film from the Dispensing Head.

ALWAYS wipe Dispensing Head, Nozzles, Drip Tray and cabinet work-surface with anti-bacterial wipes.

LED DISPLAY PANEL

The LED Display Panel indicates the status of the unit and is located on the front panel of the Chiller/Carbonator.



LED Display Panel Power ON

POWER: When the Dispensing System is plugged in and turned ON, a Blue LED will be illuminated.

CHANGE CO₂: When the CO₂ supply is low, a Red LED will illuminate and the unit will beep; alerting you to change the CO₂ Cylinder.

CALL SERVICE: If there is a problem, a Red LED will illuminate and the unit will beep. Please contact **Vivreau Service** Toll-Free at 877-999-1044 immediately.

EMPTY DRIP TRAY: When the Drip Tray Container is FULL, a Red LED will illuminate and the unit will beep; alerting you to empty the Drip Tray Container located just inside the cabinet front door or below the Dispensing System.

DISPENSING

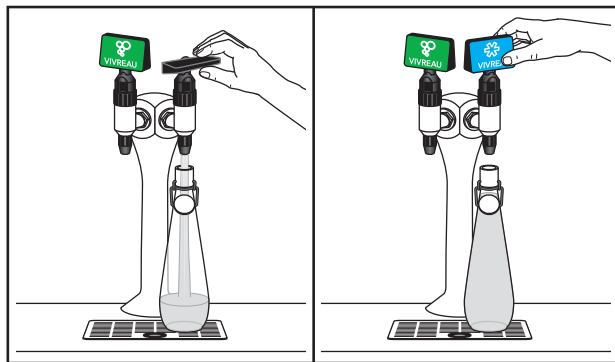
i IMPORTANT

Before operating the Vivreau V3-201 Dispensing System, make sure the Water Supply Valve is open and the unit is plugged in.

Place appropriate container on Drip Tray beneath Dispensing Head.

Chilled Still Water

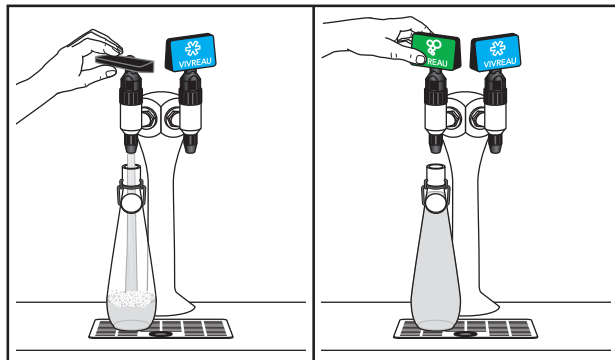
Pull down on Blue Dispenser Handle. Push Dispenser Handle UP when full.



Dispensing Chilled Still Water

Chilled Sparkling Water

Pull down on Green Dispenser Handle. Push Dispense Handle UP when full.



Dispensing Chilled Sparkling Water

The Dispenser Handles should be fully opened when filling and fully closed when filling is complete.

i IMPORTANT

Do not allow the Dispenser Handles to slam shut.

The Dispenser Handles must be closed after each Bottle is filled.

The Vivreau V3-201 Dispensing System is designed to fill Bottles of up to one (1) liter, one Bottle at a time.

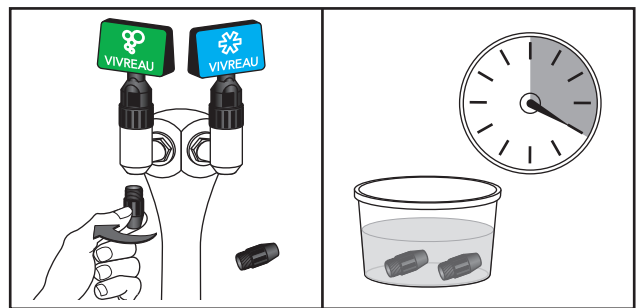
Vivreau Bottles should be filled to the line in the neck just below the Cap.

i IMPORTANT

Sparkling Water requires room for the CO₂ gas to expand.

AFTER DAILY USE

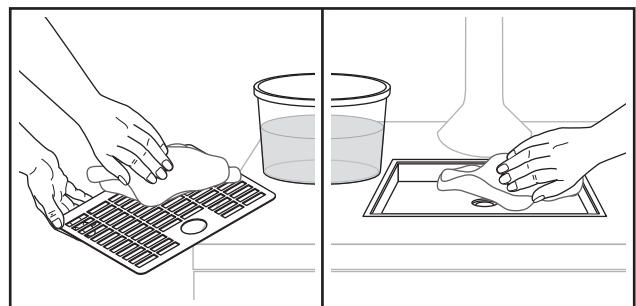
At the end of service, remove the Black Dispenser Nozzles and soak in Sanitizing Solution for a minimum of four (4) hours.



Remove Dispenser Nozzles

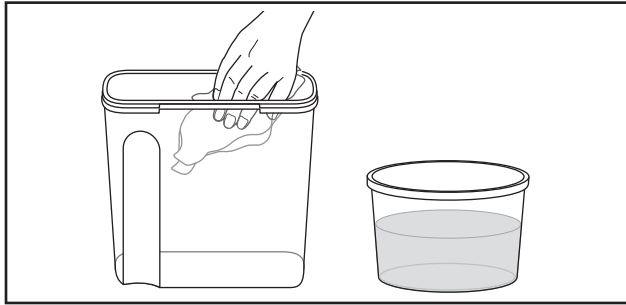
Always wear protective gloves when in contact with Sanitizing Solution.

The Dispensers and unit should be wiped down with Sanitizing Solution to keep the Dispensing System clean and in hygienic condition.



Clean Drip Tray

Empty Drip Tray Container and wipe clean with Sanitizing Solution.



Clean Drip Tray Container

Once the unit is wiped down and Nozzles removed, both Dispensers **must** be wrapped in plastic wrap to prevent contamination and misuse while not in service.

To return the Vivreau V3-201 Dispensing System to service remove all plastic wrap and rinse Dispenser Nozzles.

Reinstall the Nozzles into the Dispenser Head.

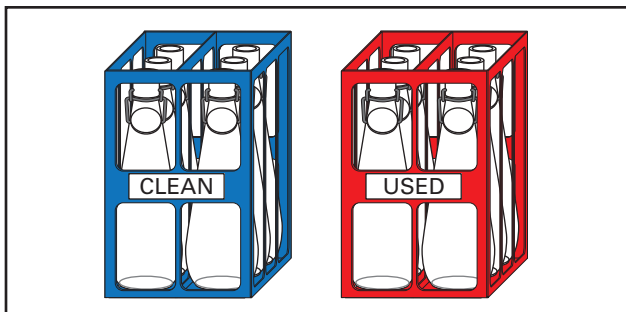
BOTTLE CLEANING INSTRUCTIONS

i IMPORTANT

Use **ONLY** Vivreau Dishwasher and Storage Racks.

Make sure the Bottling System and surrounding areas are kept clean and sanitary.

After Bottles have been used, empty remaining contents and place Bottles in Red Storage Racks.



Bottle Storage

Bottles **MUST** be handled with care and should not be allowed to rub and bang together. This could cause weakness in the glass, which may not be visible.

ALWAYS use Vivreau Storage and Dishwasher Racks.

DO NOT empty into Vivreau V3-201 Dispensing System Drip Tray.

New Bottles **MUST** be sanitized before first use.

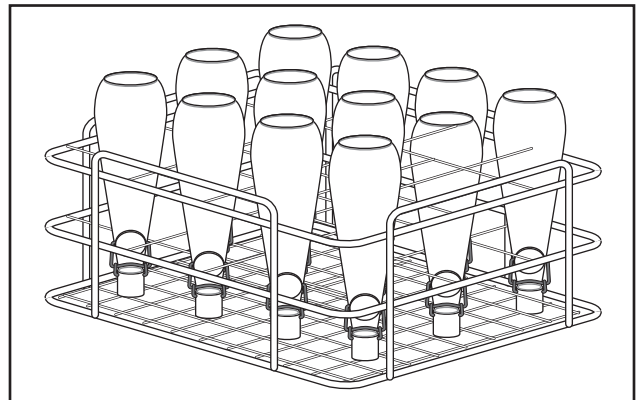
ALWAYS inspect Bottles for damage. Any Bottles showing signs of damage or cracks should be discarded and recycled appropriately.

ALWAYS visually check Bottles for food particles or any other solids.

ALWAYS wash Bottles in a three compartment sink (wash water, rinse water and sanitizer) in accordance with Local Health Codes.

ALWAYS sanitize Bottles in dishwasher.

ALWAYS place Bottles upside down in Bottle Washing Rack.



Bottle Storage

ALWAYS leave Caps attached to Bottle during sanitization. **DO NOT** close Cap.

ALWAYS keep Bottles in tray and remove from washer after Sanitization Process.

ALWAYS leave Bottles in tray until cool and dry. **DO NOT** close Cap.

ALWAYS secure Cap after Bottles have cooled.

ALWAYS visually inspect Bottles for damage before storing.

ALWAYS place Bottles upright in Blue Storage Racks.

Storage Racks can be stacked.

ALWAYS place plastic film over the top crate to ensure exterior of Bottles are kept clean.

THE VIVREAU WATER BOTTLING SYSTEM

Eliminates the need for plastic-bottled mineral water.

Helps reduce the unnecessary disposal of tens of billions of plastic bottles.

Reduces Carbon Footprint by eliminating the unnecessary daily transportation (ships, trains and trucks) of bottled water.

Water is filtered on demand using advanced micro-filtration eliminating 99.99% of bacteria, contaminants, additives, such as chlorine, odors and other impurities while allowing the natural minerals to remain for a clean, clear taste.

MAINTENANCE

MAINTENANCE RECOMMENDATIONS

Keep the unit at peak efficiency by performing all scheduled maintenance procedures that are recommended by the manufacturer. Proper maintenance will allow the best performance and a longer working life.

⚠ WARNING Before performing any service procedure, perform all safety procedures. In particular, turn OFF the water supply, disable the electricity at the main circuit breaker and prevent access to all devices that might cause unexpected health and safety hazards if turned ON.

⚠ WARNING Before performing any service that involves electrical connection or disconnection and/or exposure to electrical components, ALWAYS follow the Electrical LOCKOUT/TAGOUT Procedure. Disconnect all circuits. Failure to comply can cause property damage, injury or death.

At the end of each day or whenever necessary, be sure to clean:

- Dispensing Head/Nozzle
- Drip Tray
- The surrounding work area

Every year, have skilled, authorized personnel perform the following operations:

- General check of the unit
- Identify and replace worn parts

i IMPORTANT _____

Record all yearly inspections.

i IMPORTANT _____

Contact the factory, the factory representative or an authorized service agent to perform maintenance and repairs.

ELECTRICAL LOCKOUT/TAGOUT PROCEDURE

⚠ WARNING Before performing any service that involves electrical connection or disconnection and/or exposure to electrical components, ALWAYS follow the Electrical LOCKOUT/TAGOUT Procedure. Disconnect all circuits. Failure to comply can cause property damage, injury or death.

The Electrical LOCKOUT/TAGOUT Procedure is used to protect personnel working on an electrical unit. Before performing any maintenance or service that requires exposure to electrical components, follow these steps:

In Electrical Box, place unit Circuit Breaker into OFF position.

Place a lock or other device on the Electrical Box Cover to prevent someone from placing Circuit Breaker in the ON position.

Place a tag on Electrical Box Cover to indicate that unit has been disconnected for service and power should not be restored until tag is removed by maintenance personnel.

Disconnect the unit's Power Cord from Electrical Outlet.

Place a tag on the Power Cord to indicate that the unit has been disconnected for service and power should not be restored until tag is removed by maintenance personnel.

STAINLESS STEEL CARE

Cleaning

Stainless steel contains 70-80% iron, which will rust if not properly maintained. It also contains 12-30% chromium, which forms an invisible passive, protective film that shields against corrosion. If the film remains intact, the stainless steel will remain intact. However, if the film is damaged, the stainless steel can break down and rust. To prevent stainless steel breakdown, follow these steps:

⚠ CAUTION Never use any metal tools. Scrapers, files, wire brushes or scouring pads (except for stainless steel scouring pads) will mar the surface.

⚠ CAUTION Never use steel wool, which will leave behind particles that rust.

⚠ CAUTION Never use acid-based or chloride-containing cleaning solutions, which will break down the protective film.

⚠ CAUTION Never rub in a circular motion.

⚠ CAUTION Never leave any food products or salt on the surface. Many foods are acidic. Salt contains chloride.

For routine cleaning, use warm water, mild soap or detergent and a sponge or soft cloth.

For heavy-duty cleaning, use warm water, a degreaser and a plastic, stainless steel or Scotch-Brite pad.

Always rinse thoroughly.

Always rub gently in the direction of the steel grain.

Preserving & Restoring

Special stainless steel polishing cleaners can preserve and restore the protective film.

Preserve the life of stainless steel with a regular application of a high quality stainless steel polishing cleaner as a final step to daily cleaning.

If signs of breakdown appear, restore the stainless steel surface. First, thoroughly clean, rinse and dry the surface. Then, on a daily basis, apply a high-quality stainless steel polish according to manufacturer's instructions.

Heat Tint

Darkened areas, called heat tint, may appear on stainless steel exposed to excessive heat, which causes the protective film to thicken. It is unsightly but is not a sign of permanent damage.

To remove heat tint, follow the routine cleaning procedure. Stubborn heat tint will require heavy-duty cleaning.

To reduce heat tint, limit the exposure of equipment to excessive heat.

DAILY CLEANING

The Vivreau V3-201 Dispensing System should be cleaned once a day.

Vivreau recommends using disinfectant spray or a sanitizing wipe for cleaning.

If the Dispensing Head becomes soiled with coffee, tea, milk, etc., clean with hot soapy water using a non-abrasive cloth.

Clean the DripTray Cover and inside the DripTray using either disinfectant spray (non-chlorine) or hot, soapy water and non-abrasive cloth.

Keep area around the unit clean and sanitized.

The Vivreau V3-201 Dispensing System Nozzles should be removed daily and cleaned with hot soapy water and a non-abrasive cloth.

After completing all cleaning tasks, dispense water for at least 10 seconds to flush through the Nozzle.

DO NOT use any abrasive material on your Vivreau V3-201 Dispensing System.

CLEANING SCHEDULE

Cleaning Schedule			
Component	Task	Frequency	Personnel
Dispensing Head/Nozzle	Clean and Sanitize	Daily	End-User
Drip Tray	Drain, Clean	Daily	End-User
Drip Tray Container	Empty	As Needed	End-User
	Clean	Weekly	End-User
CO ₂ Cylinder	Fill Level	Weekly	End-User
	Replace	As Needed	End-User
Chiller Condenser Grille	Clean, Degrease	Weekly	End-User
Chiller Exterior	Clean	Weekly	End-User
Water Filter	Replacement	Twice Yearly	Authorized Service Dealer

CLEANING THE DISPENSING NOZZLES

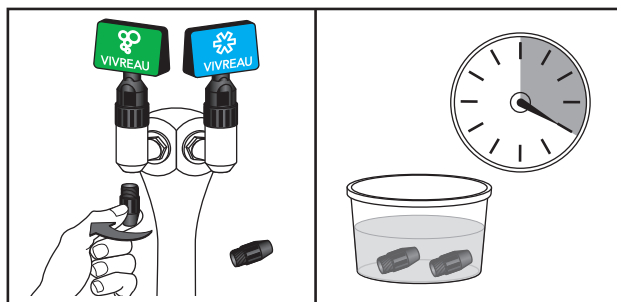
The Vivreau V3-201 Dispensing System is equipped with removable Nozzles for ease of cleaning and sanitizing.

i IMPORTANT

The Nozzles must be cleaned separately in Sanitizing Solution.

⚠ WARNING Wear protective gloves when handling Sanitizing Solution.

Fill a small container with Sanitizing Solution.
Unscrew the Nozzle.

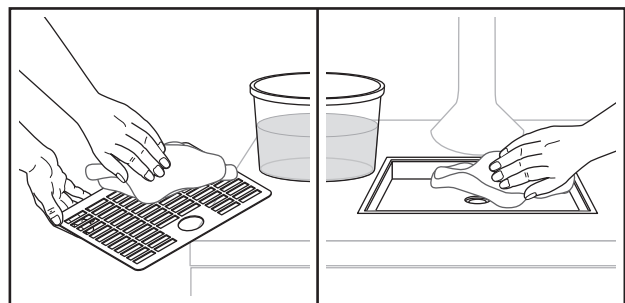


Dispensing Nozzles

Submerge Nozzle and cover in Sanitizing Solution.
Soak for a minimum of 4 hours.
Remove parts from Sanitizing Solution and rinse thoroughly.
Re-install sanitized Nozzles.
Wipe external surfaces of Dispensing Handles.

CLEANING THE DRIP TRAY

Lift Drip Tray Lid from unit.



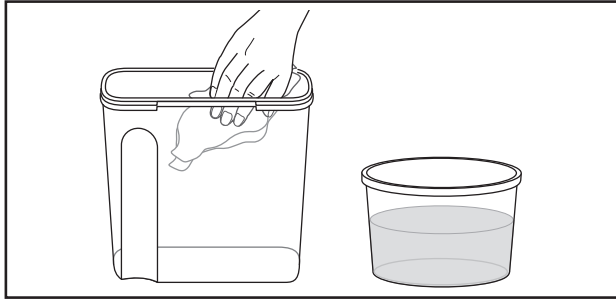
Clean the Drip Tray

Wipe top and bottom of Drip Tray Lid with a clean cloth and Sanitizing Solution.
Wipe interior of Drip Tray with a clean cloth and Sanitizing Solution.
Replace Drip Tray Lid.

CLEANING THE DRIP TRAY CONTAINER

Open front door of unit.

Lift Container Cover and remove Plastic Container.



Drip Tray Container

Dump any contents into a suitable drain.

Wipe interior with a clean cloth and Sanitizing Solution.

Return Container to unit and close cover.

i IMPORTANT

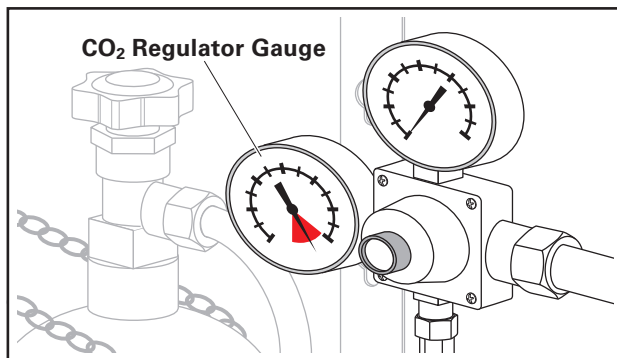
Do not clean Container in dishwasher. Damage to Container may occur.

INSPECTING THE CO₂ CYLINDER

Open the Front Door and inspect the CO₂ Regulator Gauge.

Make sure Cylinder Valve is open.

If the CO₂ Cylinder is nearly empty, the Needle on the Gauge will be in the Red Zone.



CO₂ Regulator Gauge

Replace Cylinder if needed.

CLEANING THE COOLING SYSTEM CONDENSER GRILLE

The Cooling System Condenser Grille is located on the front of the unit.

CAUTION Condenser Grille must be kept clean to allow proper cooling of components. Unit damage will occur due to overheating!

The Cooling Fins **must not** be blocked and **must** maintain a minimum distance of 4" to other objects.

Never cover the Cooling Fins.

Never place objects in front of the Cooling Fins.

Clean the Cooling Fins with a suitable brush or with a vacuum cleaner.

Degrease with a soft cloth sprayed with degreaser.

CAUTION Never spray degreaser or any other liquid into the Condenser Grille.

EXTERIOR CLEANING

Wipe all surfaces with a soft cloth and non-abrasive cleaner.

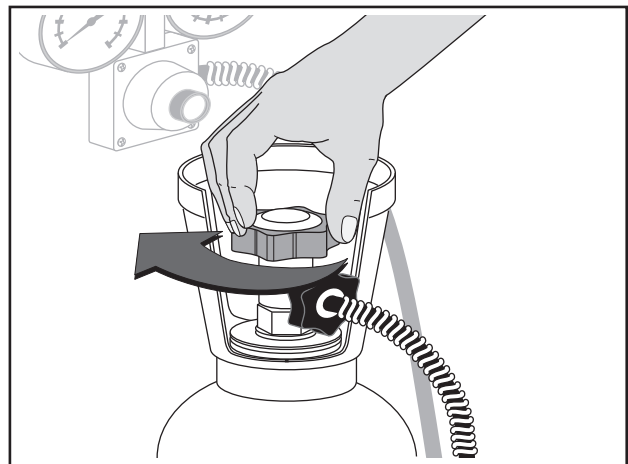
i IMPORTANT

Never use abrasive cleaners to clean the equipment.

CHANGING A CO₂ CYLINDER

WARNING Wear protective gloves and safety glasses when changing CO₂ Cylinders.

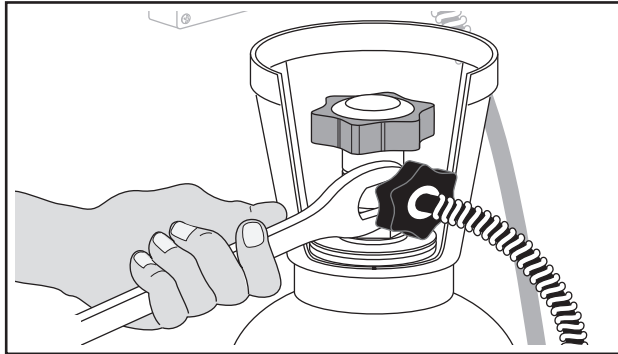
Close the Valve on top of the empty Cylinder.



Close Empty Cylinder Valve

Using the proper wrench, loosen the Nut on the Cylinder to disconnect the High-Pressure Hose or Primary Regulator. Allow residual gas to escape from the hose.

⚠ WARNING The line is pressurized. Pressure will be released while performing this procedure. Handle carefully.



Disconnect High-Pressure Hose

Place the Regulator within safe reach.

SECURE CYLINDER

Move empty Cylinder to storage area and secure safely.

Remove the plastic plug or tape from the new full Cylinder outlet and discard it.

i IMPORTANT

To avoid confusion, do not replace plastic plugs in the outlet of empty CO₂ Cylinders.

⚠ WARNING Wear protective gloves and safety glasses when purging Cylinder. Be sure to point the Cylinder outlet away from your body.

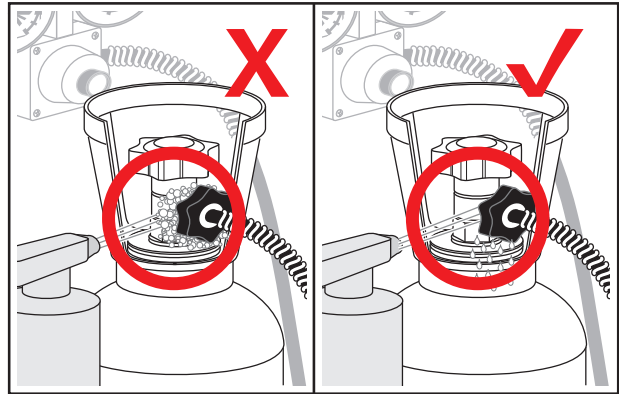
Purge the replacement Cylinder by quickly opening and closing the Valve on top to clear any dust or moisture from the outlet.

Connect the High-Pressure Hose or Primary Regulator. Make sure the Sealing Washer is seated correctly.

Tighten the Nut firmly using a wrench.

Open the Valve on top of the Cylinder.

Check for leaks using a solution of soapy water or a commercial equivalent.



Checking for Leaks

STANDING IDLE

Before Long Idle Periods

If the Vivreau V3-201 Dispensing System will be idle for more than 3 days:

Unplug the unit.

Close the Water Supply Valve.

Clean the following with antibacterial wipes and disinfectant spray:

- Dispensing Nozzle
- Dispensing Head
- Drip Tray
- Cabinet surfaces

Hang the DO NOT USE sign on the Dispensing Head to ensure the Dispensing System will not be used while the water supply is disconnected.

Cover the Dispensing Head with plastic film.

i IMPORTANT

If the Carbonator Pump Protection has switched OFF the Carbonator Pump, then the unit must be reset. To reset the unit, unplug the Power Cord and plug it back in.

AFTER LONG IDLE PERIODS

⚠ WARNING Danger to health from a lack of sanitization!

Bacteria and germs can form if the water dispenser has been disconnected from the power supply for longer than 72 hours.

After a longer idle period or a power failure, proceed as follows:

Remove the plastic film from the Dispensing Head.

Clean the following areas with antibacterial cloths and Sanitizing Spray:

- Dispensing Nozzle
- Dispensing Head
- Drip Tray
- Cabinet surfaces

Plug in the unit.

Open the Water Supply Valve to restore the water to the unit.

Place a suitable container on the Drip Tray.

Rinse the Water Dispenser by running 0.5 gallons of still water.

Rinse the Water Dispenser by running 0.5 gallons of sparkling water.

i IMPORTANT

After an idle period of four weeks or more, rinse the water dispenser by running 5.0 gallons of still water and 5.0 gallons of sparkling water.

Remove the DO NOT USE sign.

Unit is ready for normal use.

LEAK PROCEDURES

Leaks in equipment can occur even if all precautions and procedures have been followed properly.

Follow the procedures listed below in the event of a leak.

WATER

Disconnect the Water Dispenser from the power supply.

Disconnect the water supply by closing the

Water Supply Valve.

Clean up the leaked water from the area.

Indicate the Vivreau V3-201 Dispensing System is out of service by hanging a DO NOT USE sign on the Dispensing Head.

Contact **Vivreau Service** Toll-Free at 877-999-1044.

CO₂

Disconnect the Water Dispenser from the power supply.

Close the CO₂ Cylinder Valve.

Open the windows and doors to ventilate the room thoroughly.

Indicate the Vivreau V3-201 Dispensing System is out of service by hanging a DO NOT USE sign on the Dispensing Head.

Contact **Vivreau Service** Toll-Free at 877-999-1044.

REFRIGERANT

Disconnect the Water Dispenser from the power supply.

Disconnect the Water Supply by closing the Water Supply Valve.

⚠ WARNING Contact with refrigerant is hazardous to your health! Avoid contact!

Indicate the Vivreau V3-201 Dispensing System is out of service by hanging a DO NOT USE sign on the Dispensing Head.

Contact **Vivreau Service** Toll-Free at 877-999-1044.

ELECTRIC SHOCK

Disconnect the Water Dispenser from the power supply.

Disconnect the water supply by closing the Water Supply Valve.

⚠ DANGER Risk of Electrocution! Unplug equipment or turn off supply circuit breaker immediately.

After removing the immediate danger, Contact **Vivreau Service** Toll-Free at 877-999-1044.

Indicate the Vivreau V3-201 Dispensing System is out of service by hanging a DO NOT USE sign on the Dispensing Head.

TROUBLESHOOTING

The information provided in this section is intended to assist in the basic identification and correction of simple irregularities and malfunctions which might occur during daily operation.

i IMPORTANT

Service and repairs must be performed by properly qualified and trained service personnel only. Always switch OFF and unplug the equipment before servicing or repairing the unit.

BASIC TROUBLESHOOTING

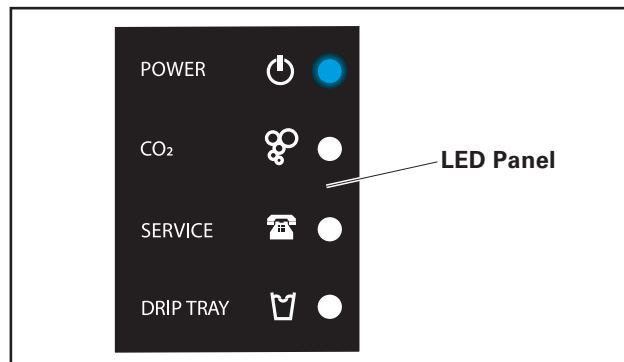
NO STILL WATER

Check Water Supply Valve is open.

NO SPARKLING WATER

If only gas is coming out, check the main Water Supply or power. If nothing is coming out, check CO₂ Cylinder and change if needed.

LED DISPLAY



Dispensing Head System LED Display Panel

POWER: Make sure unit is plugged in.

CHANGE CO₂: Replace CO₂ Cylinder.

CALL SERVICE: Unplug unit and check still water.

If still water is not working, check Water Block and water supply. Plug in unit. If Service Light returns call Vivreau Service.

EMPTY DRIP TRAY: Empty the Drip Tray waste container.

WARM WATER (Still and Sparkling)

Make sure Chiller/Carbonator is plugged in and operating.

Make sure the Condenser Grille is not clogged or blocked.

If these Troubleshooting procedures do not resolve the issue, contact **Vivreau Service** Toll-Free at 877-999-1044.

NOTES

NOTES

NOTES



Intertek





Freshly-drawn



Traditionally Served



Environmentally Friendly



Specially Branded

EUROPE



VIVREAU UK (head office)
+44 (0)845 674 9655
email: info@vivreau.com



VIVREAU Ireland
+44 (0)845 674 9655
email: info@vivreau.ie



VIVREAU Benelux
Tel: +31 (0)6 1190 6790
Email: info@vivreau-benelux.com



VIVREAU Russia
Tel: +74 9 5620 4720
Email: info@vivreau.ru



VIVREAU Switzerland
+41 (0)22 344 86 70
email: info@vivreau.ch



VIVREAU Poland
Email: info@vivreau.pl

NORTH AMERICA



VIVREAU USA
+1 877 999 1044
email: infousa@vivreau.com



VIVREAU Canada
+1 877 999 1044
email: infoCanada@vivreau.com

ASIAN PACIFIC



VIVREAU Australia
Tel: +61 3 9590 0886
Email: info@vivreau-pacific.com



VIVREAU New Zealand
Tel. +64 9 377 8621
Email: info@vivreau-pacific.com



VIVREAU Pacific Islands
Tel. +64 9 377 8621
Email: info@vivreau-pacific.com



VIVREAU South Africa
+27 21 671 6306
email: info@vivreau.co.za

AFRICA

