

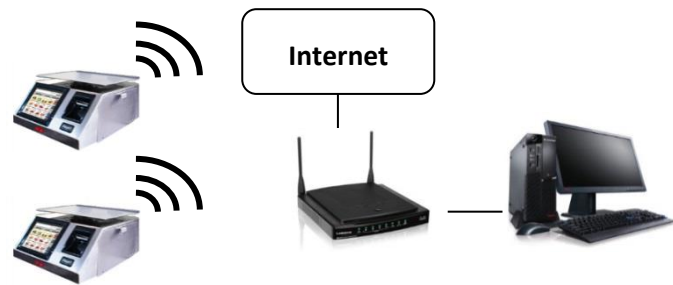


WLS Scale

WLS Network Installation Guide Rev. 1.0 Windows 7 / Windows 8

I. Requirements Network.

For optimum performance connect the computer with one Ethernet cable and the Wifi scales into a distance not greater than 50 feet from the Access Point Router Linksys E1200 (Torrey Part No. 11900171).



II. Equipment.

- WLS scale.
- Personal Computer with Windows 7 or Windows 8.
- 2 Ethernet Network Cable, Category 5.
- Router Access Point Linksys E1200 (Torrey Part No. 11900171).
- Internet connection.

III. Access Point / Router Configuration.

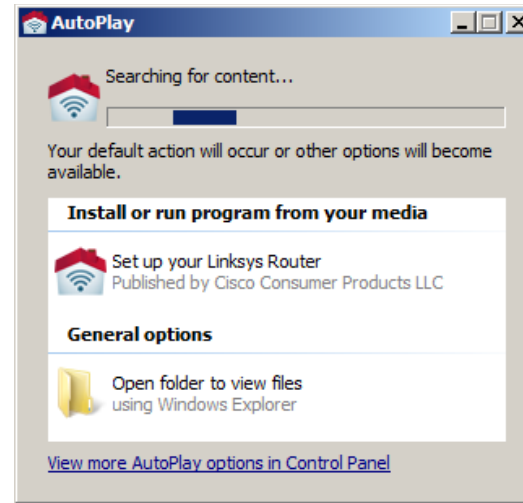
This procedure was performed using an Access Point Linksys E1200 (Torrey Part # 11900171) has not been previously configured and a personal computer with network card configuration-DHCP Client. In case your personal computer or access point has a different configuration, consult the person who made the configuration before proceeding.

- a) Connect the network cable to the PC at one of the Ethernet ports on the router. If you have an Internet connecting a network cable to the Internet port.

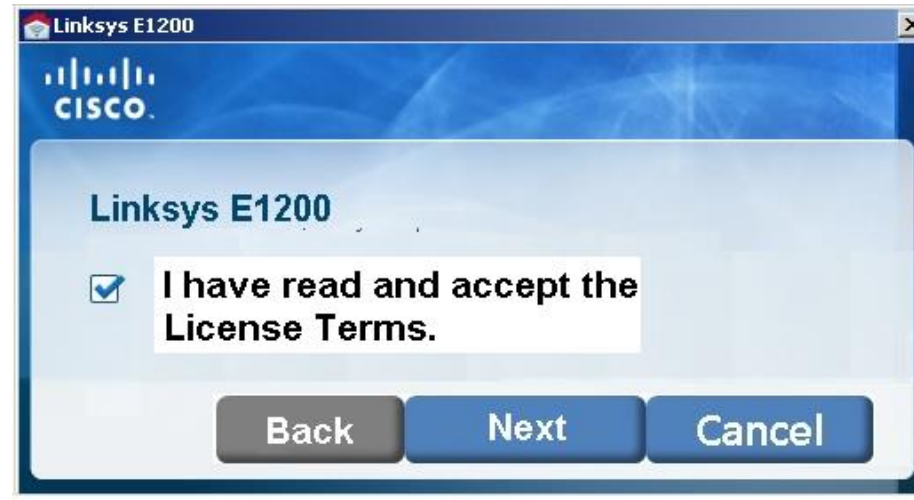


- b) Connect the power supplier to the Router to turn it on.
c) Enter in your computer, the CD-ROM that came with your Linksys Router.

- d) After reading the CD-ROM the following window appears, select the Install or Run from media.



- e) The Router Configuration program opens the next window, mark the checkbox to accept terms and press Next button.



- f) Check the connection is accorded to the below image and press the Next button.



- g) Make sure the connection is correct according to the image and press the Next button.



- h) Then the Router asked to define the name and password of your wireless network. Set the parameters and press the Next button.



Router name (SSID): *MyRouterWLS*
Password: *12345678*

- i) The Router will start to configure the wireless network, follow the instructions at the end to close the program.



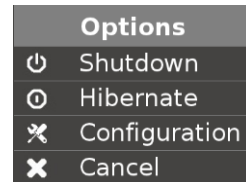
IV. WLS Scale Wifi Connection.

This procedure was performed using a scale with WLS factory settings. Perform the following steps directly on the screen of scale WLS.

- a) In the home screen press the Menu button.



- b) Select Settings.



- c) The scale asks for the configuration password, the default password at WLS scale with a factory setting is 123456.



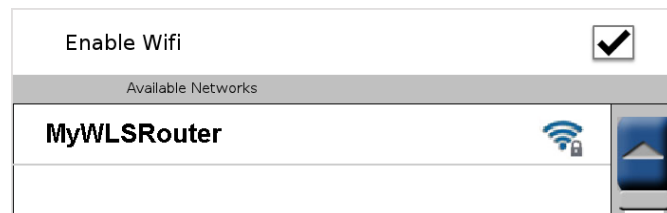
- d) Find the icon for Connectivity and push it.



- e) Select the Wifi option.



- f) Select the Enable Wireless option. The scale scans for available networks to connect.



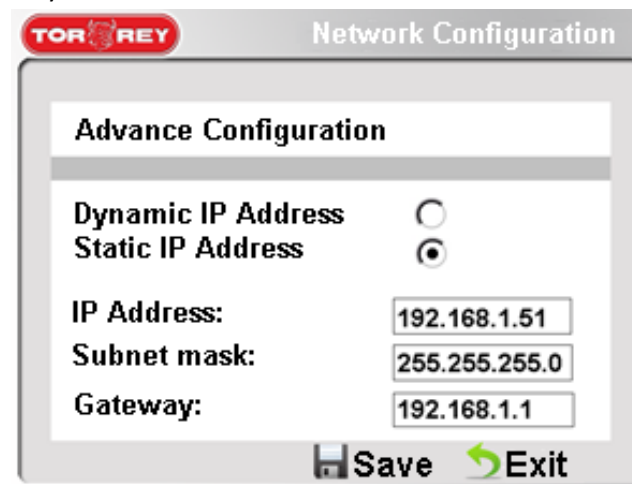
- g) Select **MyWLSRouter** option.

- h) The scale asks for the password of the network, type 12345678.



- i) Select the Advanced option.
j) Set the following parameters.

Static IP Address
IP Address 192.168.1.51
Subnet Mask 255.255.255.0
Gateway 192.168.1.1



Press Save to save the changes and exit to return to the previous window. Your WLS scale is ready to communicate over a Wifi connection.

V. WLS ADMIN Software.

Download the software from <http://www.basculas-torrey.com/modelo-wls.php>. When it is installed follow the steps below.

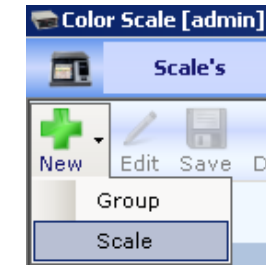
- a) Type at user *Admin* without password.



- b) In the software menu selection Scales.



- c) Select the option New Scale.



- d) Enter a name for the scale.

Name: SCALE 1

- e) Enter a description for the scale.

Description: SCALE 1 DEPTO 1

- f) Set a connection type.

Connect Type: Ethernet / Wifi

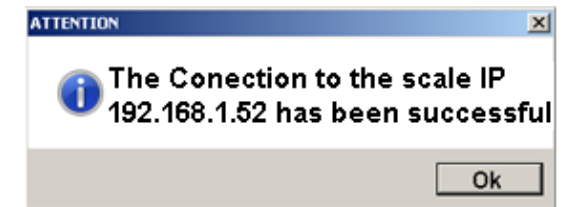
- g) Enter a valid IP address 192.168.1.51 for the Scale.

IP Address: 192.168.1.52

- h) Press the Connect button.



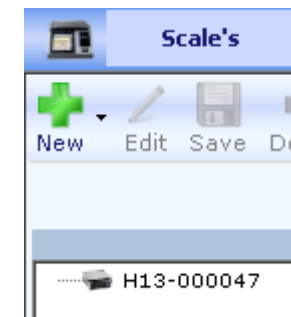
- i) The scale must successfully respond.



- j) Press the Save button.



- k) The scale has been installed successfully. Repeat V step for all other WLS scales that you want to connect to the PC.



For more information visit our website www.basculas-torrey.com or contact Technical Support by phone (0181) 8198-1014.