

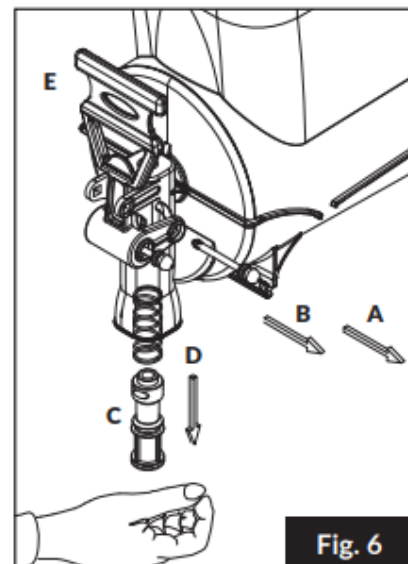
# DAILY CLEANING ROUTINE

## Initial Setup

1. Make sure machine is turned off and unplugged before cleaning.
2. Empty any remaining liquid using the tap lever.

## Disassembly

1. Place hand underneath dispensing outlet to catch pieces.
2. Pull lever pin (A) to disconnect the tap valve (C) and spring (D). (Figure 6)
3. Remove the lever pin (B) in order to wash the tap lever (E).
4. Lift lid straight upward to remove from the bowl.
5. Remove the two front fixing knobs by unscrewing them counter-clockwise.
6. Remove the bowl from its seat.
7. Gently pull on the spiral blades to remove from the cylindrical evaporators.
8. Gently pull on the spiral blade gasket to remove.
9. Gently pull on the bowl gasket to remove.
10. To remove the drip tray lift upward and then away from the machine to unseat the hooks.

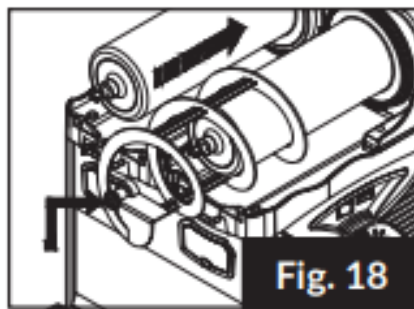
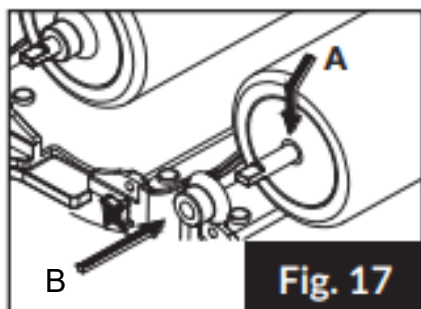
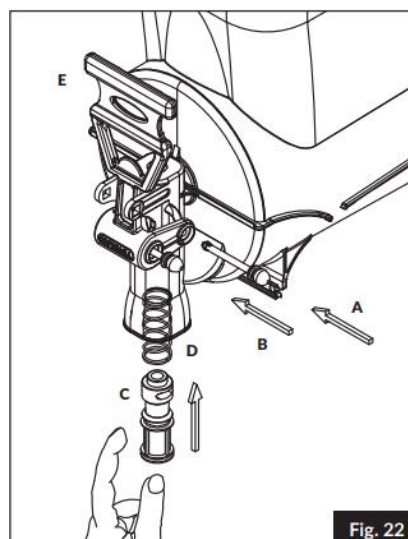
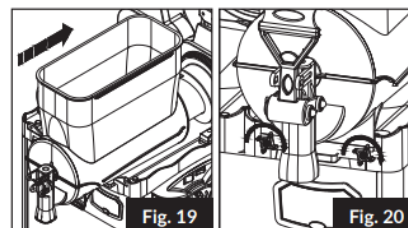
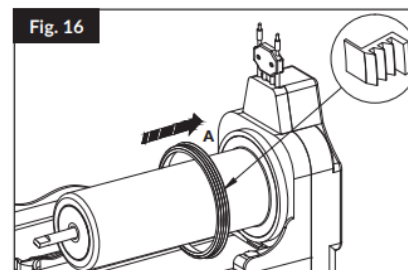


## Cleaning/Washing

1. Fill a basin with lukewarm water (104°F) and a neutral detergent suitable for plastic items. Do not use abrasive powders which may affect the bowl's transparency.
2. Wash all components, except lid, in the basin using a wet, soft cloth. DO NOT wash lid by dipping in water.
3. Rinse all parts carefully with clean lukewarm water to remove any residual soap.
4. Dry all parts with a soft cloth.

## Reassembly

1. Make sure all washed components are completely dry before being carefully reassembled.
2. Properly lubricate all components where needed.
3. Place the bowl gasket at the bottom of the cylinder evaporator, lubricating the upper part (A). (Figure 16)
4. Lubricate the surface of the cylinder in the zone of the transmission shaft outlet (A). (Figure 17)
5. Place the spiral blade gasket (B), lubricating both the internal and external surfaces. (Figure 17)
6. Insert the spiral blade so that the head joins the transmission shaft. Lubricate the external part of the head of the spiral blade.
7. After all bowl components are properly positioned and lubricated, slide the bowl into position.
8. Secure the bowl by screwing the bowl fixing knobs clockwise
9. Place the lid over the bowl, verifying the correct insertion of the electric contacts.
10. To reassemble dispensing valve, place lever (E) in place so pin (B) lines up correctly. Insert pin (B) and secure. Lubricate the tap valve. Insert the spring (D) into the product supply hole, followed by the lubricated tap valve (C) and secure with pin (A). (Figure 22)



## Rinse

1. Fill bowl with clean water up to fill line.. Turn on main power. Turn on spiral blade. Let machine run for 5 minutes. Empty the bowl through dispensing valve. Turn off main power switch. Use soft towel to dry the inside of the bowl.