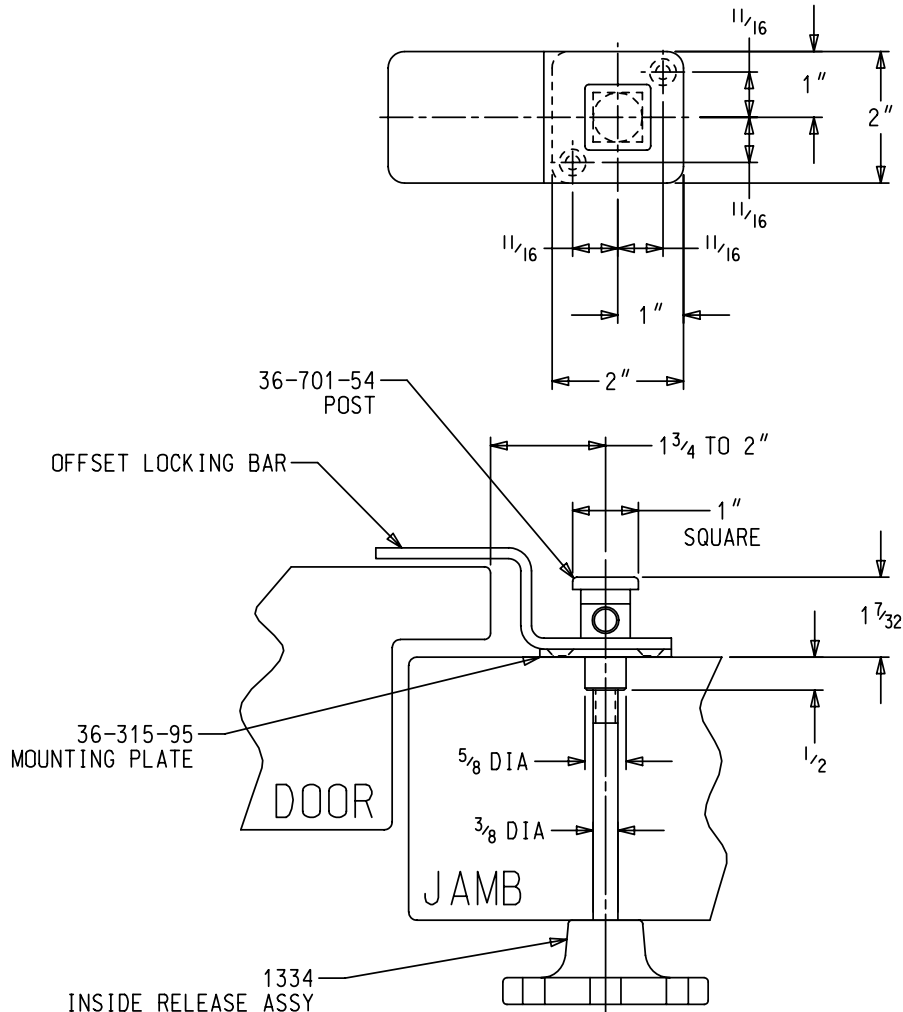




INSTALLATION INSTRUCTIONS MODEL 36 PADLOCK HASP FOR OFFSET DOORS



- 1) IT IS RECOMMENDED TO HAVE REINFORCING PLATES WITHIN THE DOOR JAMB AT THE MOUNTING LOCATION.
- 2) START INSTALLATION BY DRILLING A 3/8" DIAMETER HOLE, LOCATED AS SHOWN ABOVE, THROUGH THE JAMB.
- 3) ENLARGE THE HOLE ON THE EXTERIOR OF THE JAMB BY USING A 5/8" DRILL OR HOLE SAW TO A DEPTH OF 1/2".
- 4) INSERT THE 36-701-54 POST THROUGH THE 36-315-95 MOUNTING PLATE. LOCATE ON THE EXTERIOR OF THE JAMB, CENTERED IN THE HOLE, ORIENTED SO THE PADLOCK HOLE IS VERTICAL.
- 5) MARK, DRILL, AND TAP THE TWO MOUNTING HOLES FOR #10 SCREWS AND FASTEN TO THE JAMB.
- 6) FROM THE INSIDE, INSERT THE 1334 INSIDE RELEASE ASSEMBLY INTO THE HOLE. SLIDE THE POST THROUGH THE OFFSET LOCKING BAR AND INSERT IT INTO THE MOUNTING PLATE ON THE JAMB.
- 7) TIGHTEN THE INSIDE RELEASE ASSEMBLY UNTIL THE POST IS HELD TIGHTLY AGAINST THE MOUNTING PLATE.
- 8) CHECK FUNCTION. THE LOCKING BAR SHOULD ROTATE FREELY WHEN RAISED UP TO THE ROUND UNDER THE POST HEAD. IT MUST ALSO OVERLAP THE DOOR WHEN PADLOCKED.