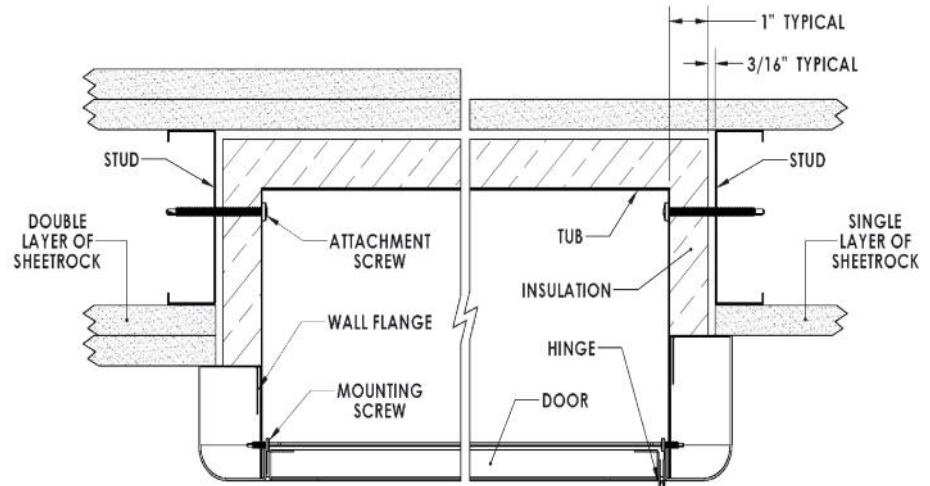


METAL OR WOOD FRAMING:

1. Remove all hardware and glazing, unlock cabinet if lock provided.
2. Install a framed opening above, below and at both sides of cabinet opening at specified location. Wall opening width, height and depth must correspond with dimensions indicated in catalog or submittal sheet.
3. Use holes provided in cabinet tub for attaching to studding. If wall configuration does not allow for that, then follow step 4 below; otherwise, skip to step 5.
4. [Drilling Additional Holes] Drill (2) 1/8" (3.2 mm) holes through tub on each side of cabinet.
5. Place cabinet in position and attach with Universal # 6 x 2-1/2" (6.4 cm) self-drilling screws. Be sure not to over-tighten on either side, which could pull the cabinet out of position in the opening and result in an exposed gap between the cabinet frame and wall opening.
6. Start the screw without completely tightening; then start a screw on the opposite side of the tub. Once all screws are started, tighten each screw in a "criss-cross" pattern. A torque setting of 4-6 is recommended if using a screw gun.
7. Once screws are fully tightened, check cabinet for square and plumb. Adjust if necessary. All interior sides should be straight with no bowing or warping.
8. Check cabinet door assembly for freedom of movement. If it binds, shim as necessary to remove any racking of tub at attachments of stud. Cabinet will need to be removed temporarily in order to add shims.
9. Remove protective plastic from acrylic or glass and install decal if intended for glass. (Panorama models glazing is pre-installed)
10. Align glazing on inside of door, holding in place while installing glass mounting clips on inside of door. Do not over-tighten.
11. Install handle and roller catch or SAF-T-LOK™ in door. Check alarm if provided.



Note: Drawings shown on this page are examples only of typical installation in a fire-rated wall, and are not to be used as recommendations for wall construction.

INSTALLATION VIDEO COMING SOON AT



ACTIVAR
INC.

Construction Products Group

FIRE-FX2™ AND SAF-T-LOK™ ARE TRADEMARKS OF ACTIVAR, INC. B



Fire-Rating: Fire-FX2™ cabinets are fabricated in accordance with the UL label for one and two hour combustible and non-combustible wall system building codes. The fire testing has met the requirement of ANSI/UL 1479 (ASTM –E814) and ULC/CAN S115-for membrane and penetration firestops. Installation instructions must be strictly adhered to in order to obtain the fire rating.



HEADQUARTERS & CUSTOMER SERVICE: 9702 NEWTON AV S, BLOOMINGTON, MN 55431

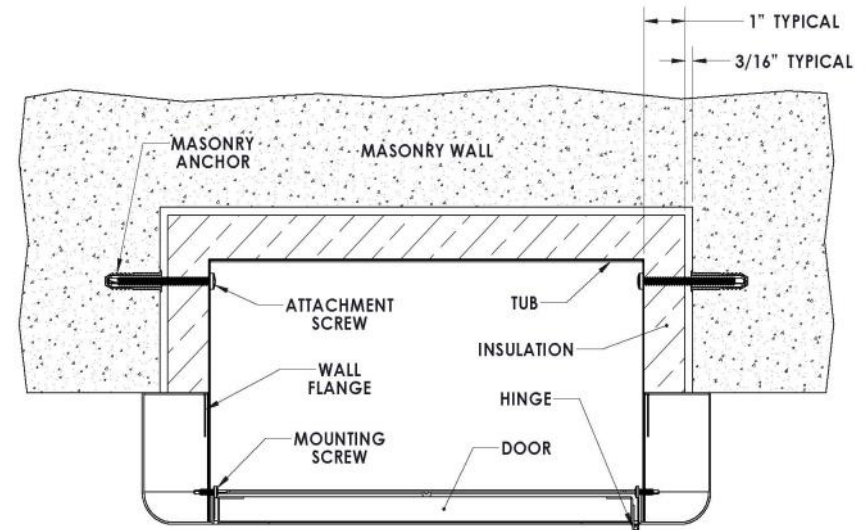
ACPG WEST COAST/SAMSON: COMMERCE, CA WAREHOUSES: DALLAS TX, FORT MYERS FL, LANCASTER PA, ATLANTA GA, CHICAGO, IL, SEATTLE WA, OMAHA NE, FARGO ND 12/10/2014

141-102 REV B

MASONRY:

1. Remove all hardware and glazing, unlock cabinet if lock provided.
2. Leave or create an opening in the masonry wall at specified location. Wall opening width, height and depth must correspond with dimensions indicated in catalog or submittal sheet.
3. Use holes provided in cabinet tub for attaching to masonry wall. If wall configuration does not allow for that, then follow step 4 below; otherwise, skip to step 5.
4. [Drilling Additional Holes] Drill (2) 1/8" (3.2 mm) holes through tub on each side of cabinet.
5. Place cabinet in position and mark location of attachments on masonry using 1/8" (3.2mm) holes as marking guides.
6. Remove cabinet and drill appropriately sized holes for your masonry anchors into masonry at marked points, and install anchors.
7. Place cabinet in position and attach with screws into masonry anchors. Be sure not to over-tighten on either side, which could pull the cabinet out of position in the opening and result in an exposed gap between the cabinet frame and wall opening.
8. Start the screw without completely tightening; then start a screw on the opposite side of the tub. Once all screws are started, tighten each screw in a "criss-cross" pattern. A torque setting of 4-6 is recommended if using a screw gun.
9. Once screws are fully tightened, check cabinet for square and plumb. Adjust if necessary. All interior sides should be straight with no bowing or warping.
10. Check cabinet door assembly for freedom of movement. If it binds, shim as necessary to remove any racking of tub at attachment to wall. Cabinet will need to be removed temporarily in order to add shims.
11. Remove protective plastic from acrylic or glass and install decal if intended for glass. (Panorama models glazing is pre-installed)
12. Align glazing on inside of door, holding in place while installing glass mounting clips on inside of door. Do not over-tighten.
13. Install handle and roller catch or SAF-T-LOK™ in door. Check alarm if provided.

Note: Drawings shown on this page are examples only of typical installation in a fire-rated wall, and are not to be used as recommendations for wall construction.



ACTIVAR
INC.

Construction Products Group

© Activar Construction Products Group, Inc 2015

FIRE-FX2™ AND SAF-T-LOK™ ARE TRADEMARKS OF ACTIVAR, INC.

Fire-Rating: Fire-FX2™ cabinets are fabricated in accordance with the UL label for one and two hour combustible and non-combustible wall system building codes. The fire testing has met the requirement of ANSI/UL 1479 (ASTM –E814) and ULC/CAN S115-for membrane and penetration firestops. Installation instructions must be strictly adhered to in order to obtain the fire rating.



HEADQUARTERS & CUSTOMER SERVICE: 9702 NEWTON AV S, BLOOMINGTON, MN 55431

ACPG WEST COAST/SAMSON: COMMERCE, CA WAREHOUSES: DALLAS TX, FORT MYERS FL, LANCASTER PA, ATLANTA GA, CHICAGO, IL, SEATTLE WA, OMAHA NE, FARGO ND 12/10/2014

141-102 REV B